



RL-7550-1

LOW DCR/ LOW PROFILE SMD INDUCTORS

DESCRIPTION

- Low Profile SMD Inductor

ENVIRONMENTAL DATA

- Storage temperature range: -55°C to +130°C
- Operating temperature range: -40°C to +130°C

PACKAGING INFORMATION

- Packaging information: pg. 490

FEATURES & APPLICATIONS

- Low profile, great for applications when space is at a minimum
- Enclosed in a rugged case to provide optimum pick and place operations
- High inductance / high current, ultra low profile inductor
- Excellent as DC-DC converter used in notebook computers, smartphones, cell phones, step-up or step-down converters and flash memory

Verify operation with sample in actual circuit. Order samples at www.rencousa.com.

MECHANICAL DIMENSIONS

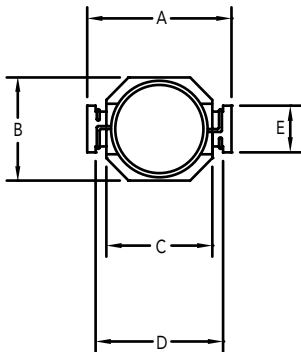
U.S. Standard (mm)

PART NUMBER	A (MAX.)	B (MAX.)	C ±0.012 (0.3)	D ±0.012 (0.3)	E ±0.008 (0.2)	F (MAX.)
RL-7550-1	0.29 (7.30)	0.22 (5.50)	0.20 (5.00)	0.25 (6.40)	0.08 (2.00)	0.08 (2.00)

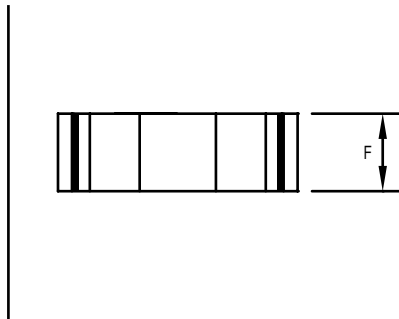
PART NUMBER	PART WEIGHT
RL-7550-1	0.15g (0.005oz)

G (REF.)	H (REF.)	I (REF.)
0.06 (1.60)	0.10 (2.50)	0.16 (4.00)

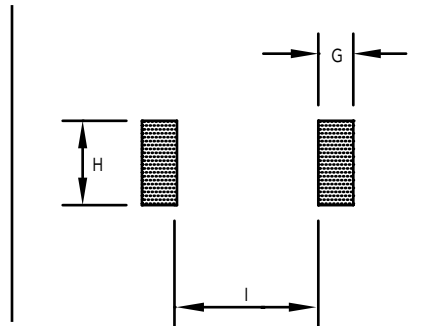
TOP VIEW



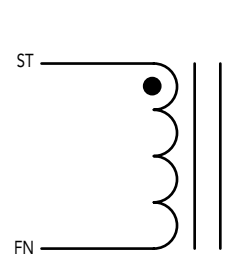
SIDE VIEW



RECOMMENDED LAND PATTERN



SCHEMATIC



RL-7550-1

Renco Part No. RL-7550-1	Inductance (μ H)	DCR Max. (Ohms)	Isat (A)	Irms (A)	SRF (MHz) Typ.
RL-7550-1-1R0M	1.0 \pm 20%	0.040	2.50	2.30	230.0
RL-7550-1-1R5M	1.5 \pm 20%	0.060	2.20	2.10	180.0
RL-7550-1-2R2M	2.2 \pm 20%	0.070	1.80	1.70	140.0
RL-7550-1-3R3M	3.3 \pm 20%	0.100	1.40	1.30	110.0
RL-7550-1-4R7M	4.7 \pm 20%	0.120	1.20	1.10	100.0
RL-7550-1-6R8M	6.8 \pm 20%	0.190	1.10	1.00	80.0
RL-7550-1-100M	10.0 \pm 20%	0.260	1.00	0.90	60.0

NOTES:

1. Isat - DC CURRENT THAT WILL CAUSE INDUCTANCE TO DROP BY 5%
2. Irms - CURRENT THAT CAUSES THE TEMPERATURE TO RISE APPROX. 40°C ABOVE AMBIENT OF 25°C
3. ELECTRICAL SPECIFICATIONS MEASURED AT 25°C
4. INDUCTANCE TESTED AT 100 kHz, 0.1 Vrms



RENCO ELECTRONICS INC.

595 International Place, Rockledge, FL 32955-4200 USA • www.rencousa.com • ISO 9001 Certified
Toll Free Engineering Hot Line: 800.645.5828 • P: 321.637.1000 • F: 321.637.1600

