

ATLANTIC VERSION TERMINATOR INTERFACE ADAPTER	PART NUMBER	REVISION	DESCRIPTION	FEED TYPE	CONVERT TO	PART NUMBERS REQUIRED					
	2151593-1	B	FINE CRIMP HEIGHT ADJUST	MECHANICAL	PNEUMATIC FEED	2119950-1	1338685-1	5-18022-5	2119641-1	2119799-1	2063440-1
					SERVO LATCH PLATE	2119951-1	-	8-2151593-5	1901094-3	-	2168400-6 (QUANTITY 2)
					SMART APPLICATOR	2161326-1	-	8-2151593-4	-	-	-
	2151593-2	B	FINE CRIMP HEIGHT ADJUST	PNEUMATIC	MECHANICAL FEED	2119949-1	1338685-1	5-18022-5	2119653-1	-	-
					SERVO LATCH PLATE	2119951-1	-	8-2151593-5	1901094-3	-	2168400-6 (QUANTITY 2)
					SMART APPLICATOR	2161326-1	-	8-2151593-4	-	-	-
	2151593-5	B	FINE CRIMP HEIGHT ADJUST	SERVO LATCH PLATE	MECHANICAL FEED	2119949-1	1338685-1	5-18022-5	2119653-1	-	-
				PNEUMATIC FEED	2119950-1	1338685-1	5-18022-5	2119641-1	2119799-1	2063440-1	
2151593-6	B	NON-CRIMP HEIGHT ADJUST	SERVO LATCH PLATE	-	-	-	-	-	-	-	
2151593-7	B	FINE CRIMP HEIGHT ADJUST	NONE	-	-	-	-	-	-	-	
7-2151593-7	A	CRIMP TOOLING KIT	-	-	-	-	-	-	-	-	

REV	DATE	DESCRIPTION	BY	CHK
1	03AUG2012	DEVELOPMENT	YY	SX
A	17SEP2012	RELEASED	YY	SX
B	16JUN2014	ECR-14-008957	KH	TE

QTY	REV	ITEM	DESCRIPTION	DATE	BY	
-	-	-	1	2119640-1	PUSH ROD, AIR FEED	250
-	-	-	1	2079988-1	BUSHING, LCH5-12, MISUMI	249
-	-	-	1	2119641-1	FEED CAM, AIR FEED	248
-	1	-	1	2119798-1	DETENT PIN	247
-	1	-	1	1-22279-3	SPRING, COMPRESSION	246
-	-	1	-	2119758-1	RAM, AMP STYLE, SIDE FEED, NON-ADJ.	245
-	1	1	1	2119082-6	CAM, SNAIL, INSULATION ADJUSTMENT	244
-	1	1	1	2079764-1	WASHER, WAVE SPRING, CREST-TO-CREST	243
-	1	1	1	2119083-1	RETAINER, INSULATION DIAL	242
-	1	1	1	7-18023-7	SCR, SKT HD CAP M3 X 4.0	241
-	-	2	2	2168400-6	SHCS, LOW HEAD, RoHS, M5 X 16	240
-	-	-	-	2119580-1	MECHANICAL FEED ASSEMBLY	239
-	-	-	-	2063440-1	AIR FEED MODULE	238
-	-	1	1	2119740-2	TAG, IDENTIFICATION	213
-	-	1	1	1901094-3	SPACER, FEEDER	198
-	-	-	-	21045-3	RING, RETAIN, EXTERN, 3/16 CRESCENT	172
-	1	1	1	994969-1	MAGNET, RARE EARTH HIGH ENERGY	166
-	REF	REF	REF	REF	994970-2 COUNTER, MAGNETIC	164
-	-	-	-	240638-1	SPRING, FEED FINGER	163
-	-	-	-	3-23627-7	PIN, RETAIN, GRVD, 3/16 X .854	137
-	-	-	-	2119799-1	HOLDER, FEED FINGER, AF	136
-	-	REF	REF	-	SEE NOTE 4 MEMORY CHIP, PROGRAMMED	135
-	-	1	1	1633743-1	SERVO FEED LATCH ASM	133
-	2	2	2	2	1-18028-2 WASHER, FLAT, REG M4	119
-	REF	REF	-	-	2119944-1 FEED FINGER ASSEMBLY, SF	117
-	1	1	1	1	455888-6 SPACER, CRIMPER	82
-	1	1	1	1	2119956-1 DOCUMENTATION PACKAGE	71
-	1	-	-	-	2119740-1 TAG, IDENTIFICATION	67
-	2	2	2	2	2168078-1 SCREW, DRIVE, RH, RoHS, 2 x .188	66
-	1	-	-	-	2119793-1 LIMITER, ADJUSTMENT BOLT	63
-	3	-	-	-	992763-5 SCR, SET, SOC, CONE POINT, M3 x 4.0	62
-	1	1	1	1	2079383-4 SCR, BHSC, RoHS (M4 X 8)	60
-	-	-	-	-	5-18022-5 SCR, HEX HD CAP, M4 X 6.0	59
-	-	-	-	-	1338685-1 PAWL, FEED	56
-	4	4	4	4	2168400-1 SHCS, LOW HEAD, RoHS, M4 X 12	54
-	2	2	2	2	1-2168083-0 SCR, SKT HD CAP, RoHS, M4 X 10	53
-	1	1	1	1	5018030-1 NUT, HEX, REG, RoHS, M3	52
-	1	1	1	1	811242-5 BUMPER, HOLD DOWN	51
-	1	1	1	1	690753-2 SPACER, TONKER	50
-	-	-	-	-	18023-9 SCR, SKT HD CAP M4 X 6.0	49
-	-	-	-	-	2119652-1 FEED CAM, PRE FEED	48
-	-	-	-	-	2119653-1 FEED CAM, POST FEED	47
-	1	1	1	1	2119656-9 APPLICATOR BASIC ASSEMBLY, SF	46
-	1	-	-	-	2119370-1 RAM, AMP STYLE, SIDE FEED	44
-	1	1	1	1	2079383-7 SCR, BHSC, RoHS (M8 X 25)	41
-	1	-	-	-	2119645-1 DISC, NUMBERED FA WIRE ADJUSTMENT	40
-	1	-	-	-	2119957-1 APPLICATOR SHIM PACK	39
-	1	1	1	1	2119644-1 RAM WASHER, PRECISION	38
-	1	1	1	1	2119085-1 FA HEAD, ATLANTIC STYLE	37
-	1	-	-	-	2119092-1 BOLT, ADJUSTMENT	35
-	1	1	1	1	1752356-3 SUPPORT, TERMINAL	34
-	2	2	2	2	2079383-5 SCR, BHSC, RoHS (M4 X 20)	33
-	1	1	1	1	2161328-1 HEX HEAD, FLANGED, M5 x 8mm LONG	32
-	1	1	1	1	1-1320908-0 SPACER, STRIP GUIDE	30
-	1	1	1	1	2119959-4 ASSEMBLY, STRIP GUIDE	29
-	1	1	1	1	1-455888-0 SPACER, CRIMPER	28
-	1	1	1	1	1320928-2 STRIP GUIDE	24
-	1	1	1	1	240792-2 DRAG, TERMINAL	23
-	1	1	1	1	2168083-2 SCR, SKT HD CAP, RoHS, M4 X 8.0	21
-	1	1	1	1	2119533-1 STRIPPER, SIDE FEED	19
-	1	1	1	1	2119806-1 INSERT, SHEAR	13
-	1	1	1	1	3-22280-3 SPRING, COMPRESSION	12
-	1	1	1	1	1-356885-4 STOP, SHEAR	11
-	1	1	1	1	2119805-1 SHEAR HOLDER, FRONT	10
-	1	1	1	1	454276-5 FLOATING SHEAR, FRONT	9
-	1	1	1	1	9-1633131-3 ANVIL, COMBINATION .080	8
-	-	-	-	-	-	7
-	-	-	-	-	-	6
-	1	1	1	1	2119757-8 DEPRESSOR, SHEAR	5
-	1	1	1	1	1-238011-8 BLOCK, CRIMPER SPACER	4
-	1	1	1	1	3-2119582-7 CRIMPER, INSULATION F PREMIUM	3
-	1	1	1	1	455888-7 SPACER, CRIMPER	2
-	1	1	1	1	2-456405-9 CRIMPER, WIRE PREMIUM	1

APPLICATOR DATA		
CRIMP SIZE	WIRE	TYPE
2.03 mm [.080]	2.03 mm [.080]	F
INSUL	2.29 mm [.090]	F

TERMINAL DATA: TE TERMINAL		TE CRIMP SPECIFICATION	
TERMINAL NAME: 2.8mm BLADE, UNSEALED			
WIRE STRIP LENGTH	INSULATION DIAMETER RANGE		
4.80-5.60 mm [.189-.220 IN]	Ø1.40-2.06 mm [.055-.081 IN]		
TERMINAL APPLICATION SPECIFICATION	114-13013		

TE TERMINAL	TE TERMINAL	TE TERMINAL	TE TERMINAL
1326029-6	1326030-6		

WIRE SIZE	CRIMP HEIGHT mm [INCH]	CRIMP HEIGHT REFERENCE SETTING
18 AWG	1.37+/-0.05 [.054+/- .002]	5.1
1.00mm2	1.30+/-0.05 [.051+/- .002]	7.4
0.75mm2	1.22+/-0.05 [.048+/- .002]	7.8
20 AWG	1.21+/-0.05 [.048+/- .002]	8.1
0.50mm2	1.12+/-0.05 [.044+/- .002]	8.6

- 1. RECOMMENDED SPARE PARTS
- 2. GREASE BEARING SURFACES LIGHTLY
- 3. LUBRICATE DAILY PER THE APPLICATOR INSTRUCTION SHEET SUPPLIED WITH THE APPLICATOR.
- 4. APPLICATOR SPECIFIC DATA TO BE ENTERED INTO BLANK MEMORY CHIP AT ASSEMBLY. SEE BELOW FOR PART NUMBER:  
 MECHANICAL FEED WITH "SMART APPLICATOR" CONVERSION: 8-2151593-4  
 PNEUMATIC FEED WITH "SMART APPLICATOR" CONVERSION: 8-2151593-4  
 SERVO FEED WITH "FINE CRIMP HEIGHT ADJUST": 8-2151593-5  
 SERVO FEED WITH "NON-CRIMP HEIGHT ADJUST": 8-2151593-6
- 5. ADJUSTMENT OF THE STRIPPER MAY BE REQUIRED WHEN MOVING THE APPLICATOR BETWEEN BENCH AND LEADMAKER APPLICATIONS.
- 6. APPLY PART NUMBER 1-23419-5 LOCTITE TO THREADS OF ITEMS 62 & 242. FOR -6 ONLY APPLY PART NUMBER 1-23419-5 LOCTITE TO THREADS OF ITEMS 37 & 242.
- 7. GREASE THREADS, GROOVE AND O-RING ON ITEMS 35 & 252.
- 8. MAGNET, ITEM 166 MUST BE ORIENTED CORRECTLY IN ORDER TO PROPERLY ACTUATE THE COUNTER.
- 9. CRIMP HEIGHT REFERENCE SETTING WAS THE SETTING USED WHEN THE APPLICATOR WAS QUALIFIED AT THE FACTORY. ADJUSTMENT MAY BE NECESSARY WHEN RUNNING APPLICATOR IN THE FIELD.
- 10. SPARE FEED CAM STORAGE LOCATION REFER TO INSTRUCTION SHEET FOR ADDITIONAL INFORMATION.
- 11. TO CONVERT THE APPLICATOR TO A NON-CARRIER CUTTING STYLE, REMOVE ITEM 13 AND ATTACH TO THE LOCATION ON THE BACK SIDE OF THE HOUSING. REFER TO INSTRUCTION SHEET FOR ADDITIONAL INFORMATION.
- 12. WHEN ASSEMBLING -6 NON-CRIMP HEIGHT ADJUST APPLICATOR USE SHIM PACK 2119957-2 TO ALIGN APPLICATOR'S MAXIMUM WIRE CRIMP HEIGHT AT NORMAL TERMINATOR SHUT HEIGHT

\*WARNING  
 ON INSTALLATION, SET WIRE DISC, ITEM 40 TO LARGEST WIRE SIZE SETTING. USE OF SETTINGS BELOW MINIMUM REQUIRED CRIMP HEIGHT SETTING WILL CAUSE DAMAGE TO CRIMP TOOLING.

-77	-7	-6	-5	-2	-1	PART NO	DESCRIPTION	ITEM NO
-	-	1	-	-	-	2119957-2	APPLICATOR SHIM PACK	260
-	1	-	1	1	1	8-21084-0	O-RING, .676 ID, .070 DIA. MAT.	252

**ATLANTIC VERSION**  
 Shown on sheets 1 of 4 & 2 of 4  
 (Pacific version shown on sheets 3 of 4 & 4 of 4)

DIMENSIONS:			TOLERANCES UNLESS OTHERWISE SPECIFIED:		
mm	0 PLC	±	PLC	±	
	1 PLC	±0.5	PLC	±0.13	
	2 PLC	±0.13	PLC	±0.013	
	3 PLC	±0.013	PLC	±0.001	
	4 PLC	±0.001	ANGLES		
	FINISH				
MATERIAL		WEIGHT		SCALE	
		A1 00779		1:2	

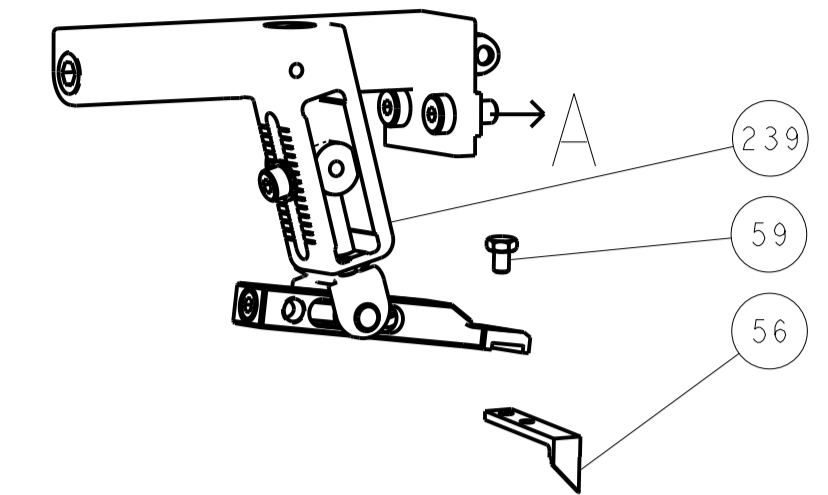
DRAWING NO	DATE	REV	BY	CHK
03AUG2012	03AUG2012		Y. YIN	G. BAILEY
03AUG2012			S. XI	

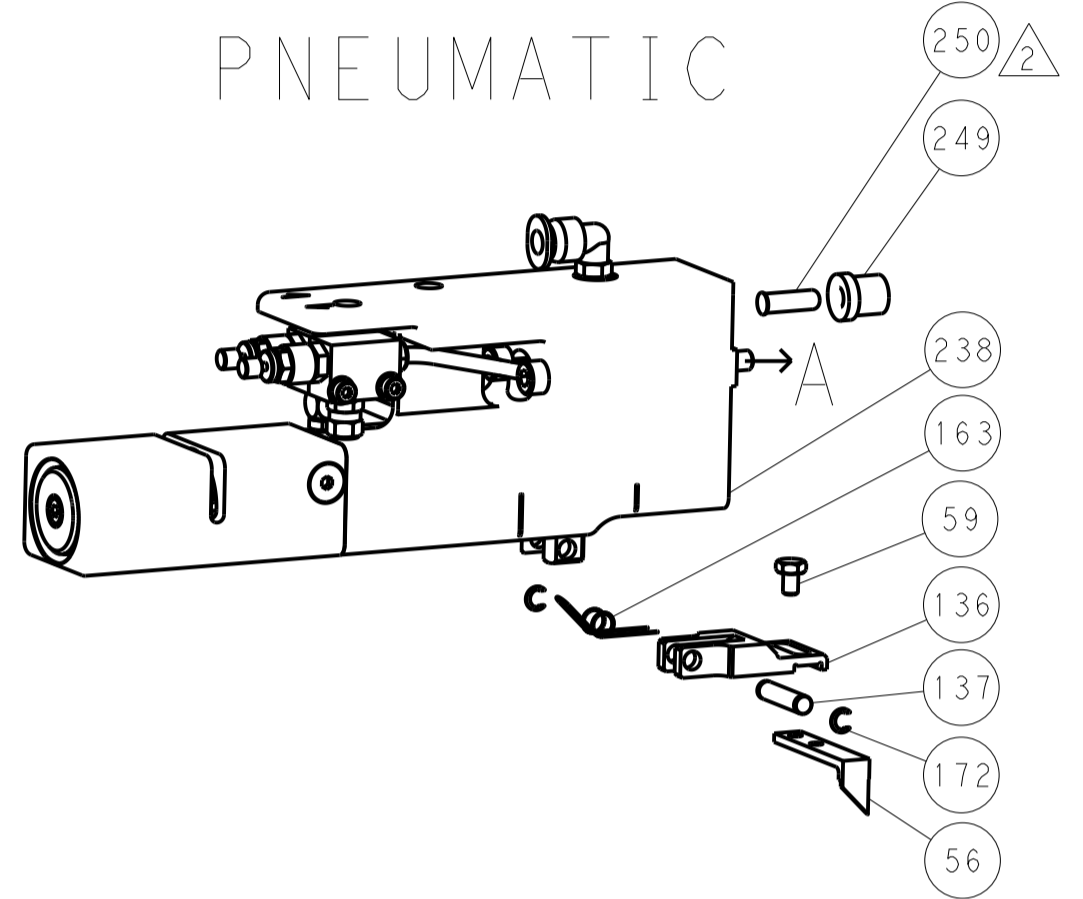
TE Connectivity	Harrisburg, PA 17105-3608
Ocean Side Feed Applicator	
SIZE	CAGE CODE
A1	00779
Customer Accessible Production Drawing	SHEET 1 OF 4
SCALE	REV
1:2	B

LOC		DIST		REVISIONS			
A	66	P	LTN	DESCRIPTION	DATE	DWN	APVD
		-		SEE SHEET 1			

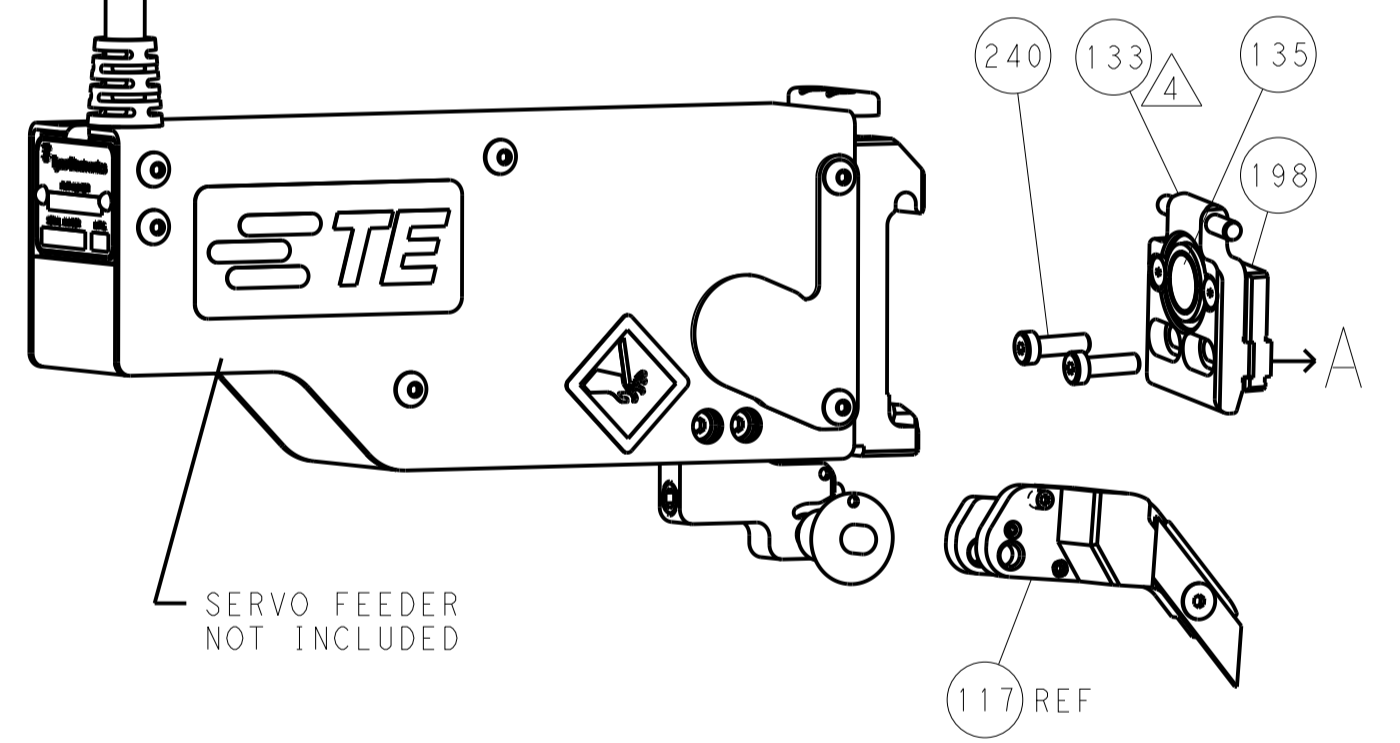
### FEED TYPE MECHANICAL



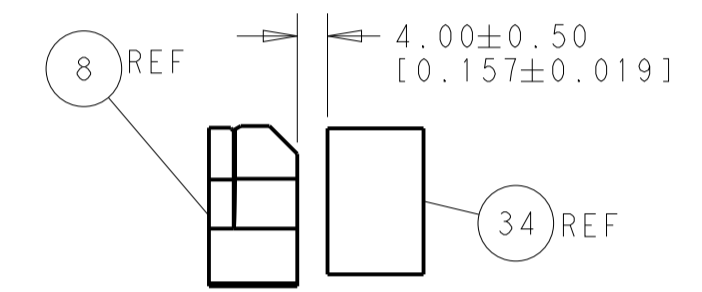
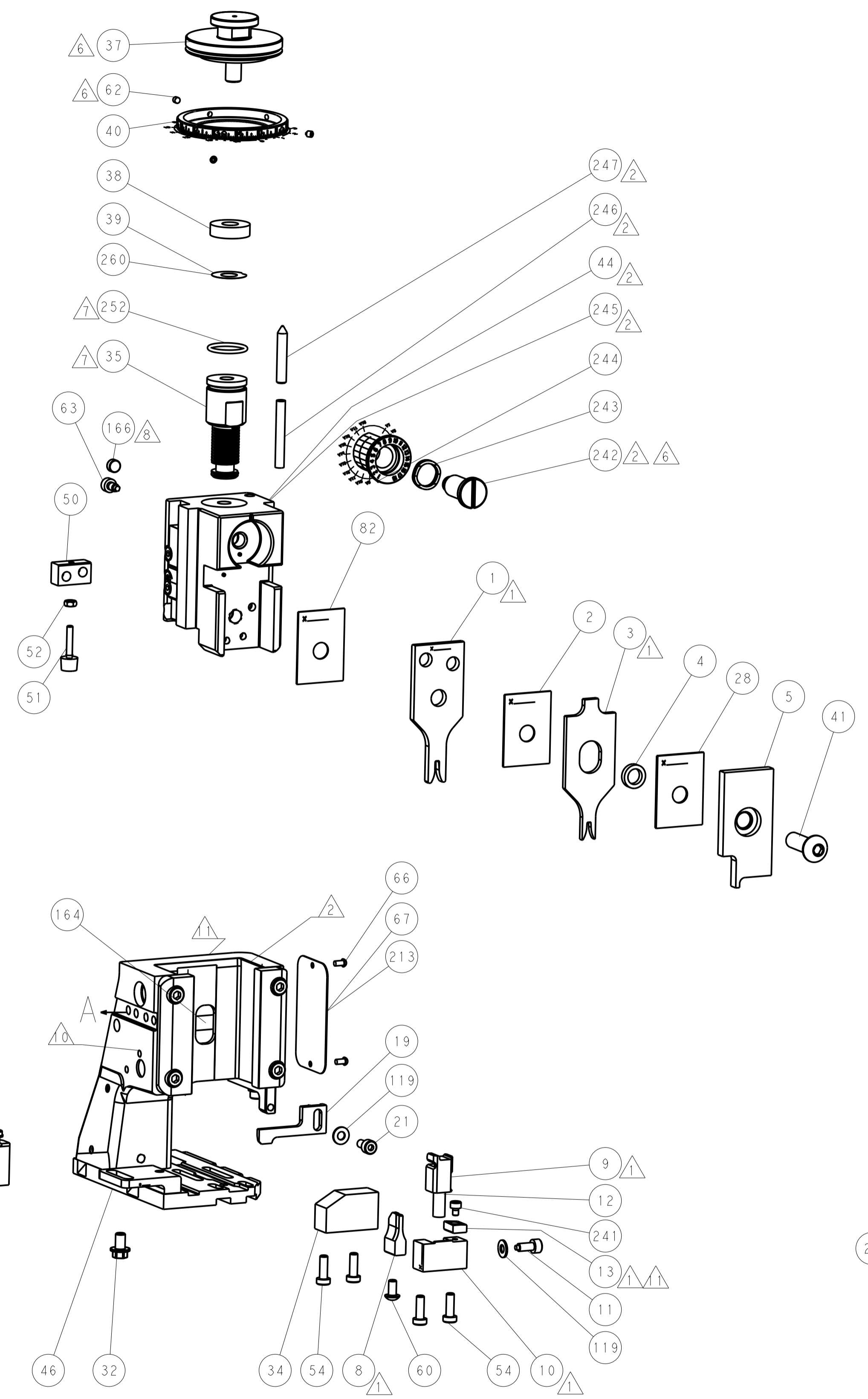
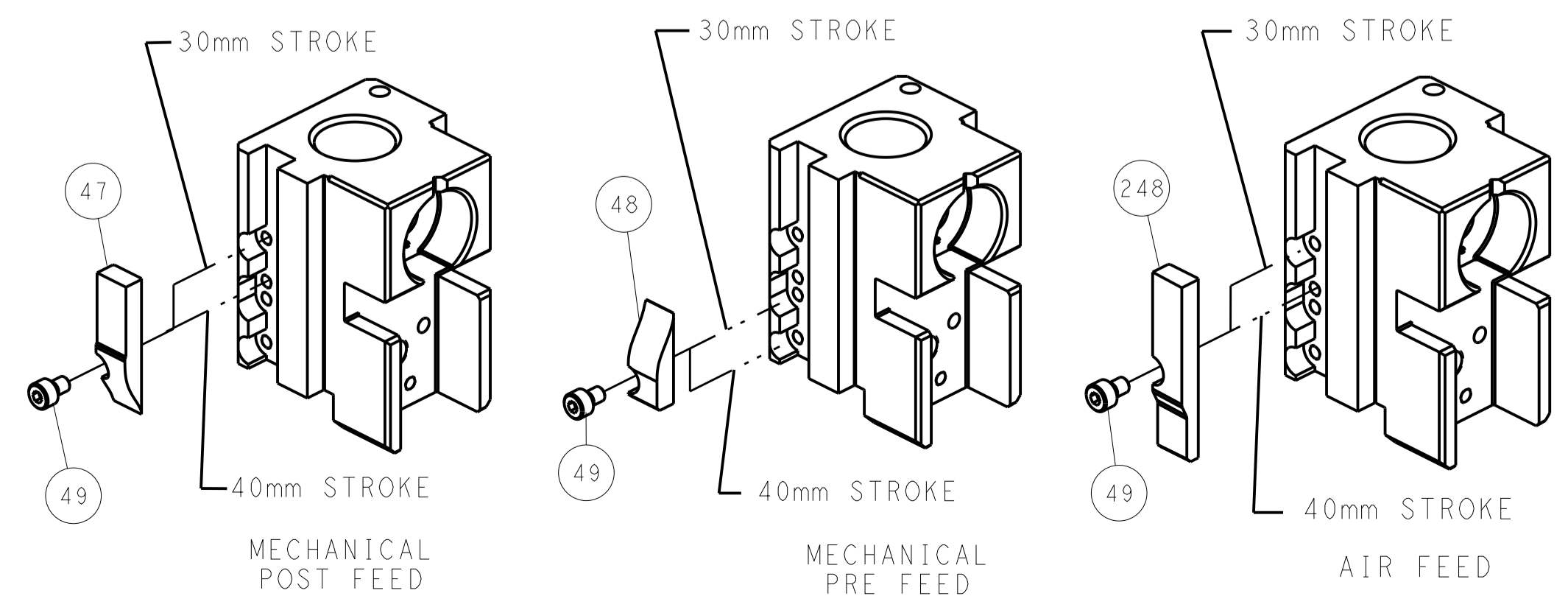
### PNEUMATIC



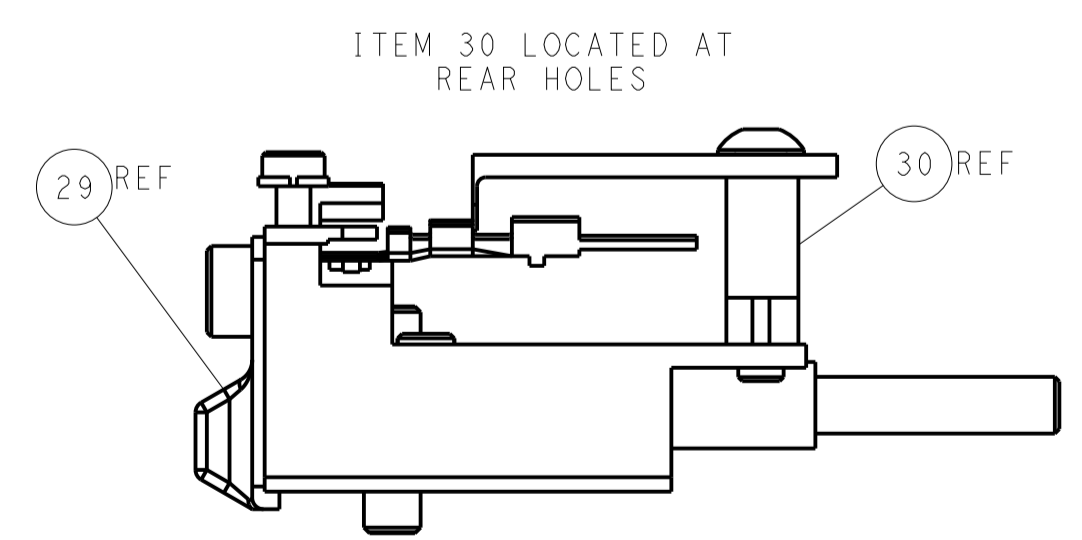
### SERVO LATCH PLATE



### CAM POSITIONS



TERMINAL SUPPORT LOCATION



ITEM 30 LOCATED AT REAR HOLES

FEED TRACK POSITION GUIDE BY WIRE BARREL

**ATLANTIC VERSION**  
 Shown on sheets 1 of 4 & 2 of 4  
 (Pacific version shown on sheets 3 of 4 & 4 of 4)

DIMENSIONS:		TOLERANCES UNLESS OTHERWISE SPECIFIED:		DWN T. YIN 03AUG2012		TE Connectivity Harrisburg, PA 17105-3608	
mm	0 PLC ±0.5	1 PLC ±0.5	2 PLC ±0.13	3 PLC ±0.013	4 PLC ±0.001	NAME	Ocean Side Feed Applicator
ANGLES	FINISH	WEIGHT	RESTRICTED TO	APVD S. X. BAILEY 03AUG2012	PRODUCT SPEC	SIZE	CAGE CODE DRAWING NO
				APPLICATION SPEC		A11	00779 ©=2151593
Customer Accessible Production Drawing				SCALE	1:2	SHEET	2 of 4

PACIFIC VERSION TERMINATOR INTERFACE ADAPTER	PART NUMBER	REVISION	DESCRIPTION	FEED TYPE	APPLICATOR STYLE CONVERSION CHART						
					CONVERT TO	PART NUMBERS REQUIRED					
	2-2151593-1	B	FINE CRIMP HEIGHT ADJUST	MECHANICAL	PNEUMATIC FEED	2119950-1	1338685-1	5-18022-5	2119641-2	2119799-1	2063440-1
					SERVO LATCH PLATE	2119951-1	-	8-2151593-5	1901094-3	-	2168400-6 (QUANTITY 2)
					SMART APPLICATOR	2161326-1	-	8-2151593-4	-	-	
	2-2151593-2	B	FINE CRIMP HEIGHT ADJUST	PNEUMATIC	MECHANICAL FEED	2119949-1	1338685-1	5-18022-5	2119653-2	-	-
					SERVO LATCH PLATE	2119951-1	-	8-2151593-5	1901094-3	-	2168400-6 (QUANTITY 2)
					SMART APPLICATOR	2161326-1	-	8-2151593-4	-	-	
	2-2151593-5	B	FINE CRIMP HEIGHT ADJUST	SERVO LATCH PLATE <sup>4</sup>	MECHANICAL FEED	2119949-1	1338685-1	5-18022-5	2119653-2	-	-
					PNEUMATIC FEED	2119950-1	1338685-1	5-18022-5	2119641-2	2119799-1	2063440-1
	2-2151593-7	B	FINE CRIMP HEIGHT ADJUST	NONE	-	-	-	-	-	-	-
	7-2151593-7	A	CRIMP TOOLING KIT	-	-	-	-	-	-	-	-

APPLICATOR DATA		
CRIMP WIRE	SIZE	TYPE
INSUL	2.03 mm [ .080]	F
	2.29 mm [ .090]	F
APPLICATOR INSTRUCTIONS		
408-10389		

TERMINAL DATA: TE TERMINAL		TE CRIMP SPECIFICATION
TERMINAL NAME: 2.8mm BLADE, UNSEALED		
WIRE STRIP LENGTH		INSULATION DIAMETER RANGE
4.80-5.60 mm [ .189-.220 IN]		Ø1.40-2.06 mm [ .055-.081 IN]
TERMINAL APPLICATION SPECIFICATION	114-13013	
TERMINALS APPLIED		
TE TERMINAL	TE TERMINAL	TE TERMINAL
1326029-6	1326030-6	

WIRE SIZE	CRIMP HEIGHT mm [INCH]	CRIMP HEIGHT REFERENCE SETTING
18 AWG	1.37 +/- 0.05 [ .054 +/- .002]	5.1
1.00mm <sup>2</sup>	1.30 +/- 0.05 [ .051 +/- .002]	7.4
0.75mm <sup>2</sup>	1.22 +/- 0.05 [ .048 +/- .002]	7.8
20 AWG	1.21 +/- 0.05 [ .048 +/- .002]	8.1
0.50mm <sup>2</sup>	1.12 +/- 0.05 [ .044 +/- .002]	8.6

- RECOMMENDED SPARE PARTS
- GREASE BEARING SURFACES LIGHTLY
3. LUBRICATE DAILY PER THE APPLICATOR INSTRUCTION SHEET SUPPLIED WITH THE APPLICATOR.
- APPLICATOR SPECIFIC DATA TO BE ENTERED INTO BLANK MEMORY CHIP AT ASSEMBLY. SEE BELOW FOR PART NUMBER:  
 MECHANICAL FEED WITH "SMART APPLICATOR" CONVERSION: 8-2151593-4  
 PNEUMATIC FEED WITH "SMART APPLICATOR" CONVERSION: 8-2151593-4  
 SERVO FEED WITH "FINE CRIMP HEIGHT ADJUST": 8-2151593-5
5. ADJUSTMENT OF THE STRIPPER MAY BE REQUIRED WHEN MOVING THE APPLICATOR BETWEEN BENCH AND LEADMAKER APPLICATIONS.
- APPLY PART NUMBER 1-23419-5 LOCTITE TO THREADS OF ITEMS 62 & 242.
- GREASE THREADS, GROOVE AND O-RING ON ITEMS 139 & 152.
- MAGNET MUST BE ORIENTED CORRECTLY IN ORDER TO PROPERLY ACTUATE THE COUNTER.
- CRIMP HEIGHT REFERENCE SETTING WAS THE SETTING USED WHEN THE APPLICATOR WAS QUALIFIED AT THE FACTORY. ADJUSTMENT MAY BE NECESSARY WHEN RUNNING APPLICATOR IN THE FIELD.
- SPARE FEED CAM STORAGE LOCATION REFER TO INSTRUCTION SHEET FOR ADDITIONAL INFORMATION.
- TO CONVERT THE APPLICATOR TO A NON-CARRIER CUTTING STYLE, REMOVE ITEM 13 AND ATTACH TO THE LOCATION ON BACK SIDE OF THE HOUSING. REFER TO INSTRUCTION SHEET FOR ADDITIONAL INFORMATION.

\*WARNING  
 ON INSTALLATION, SET WIRE DISC, ITEM 40 TO LARGEST WIRE SIZE SETTING. USE OF SETTINGS BELOW MINIMUM REQUIRED CRIMP HEIGHT SETTING WILL CAUSE DAMAGE TO CRIMP TOOLING.

SET UP GAUGE	LOC	DIST	REVISIONS					
2119599-1	A	66	F	L	R	DATE	OWN	APVD
-	-	-	SEE SHEET 1			-	-	-

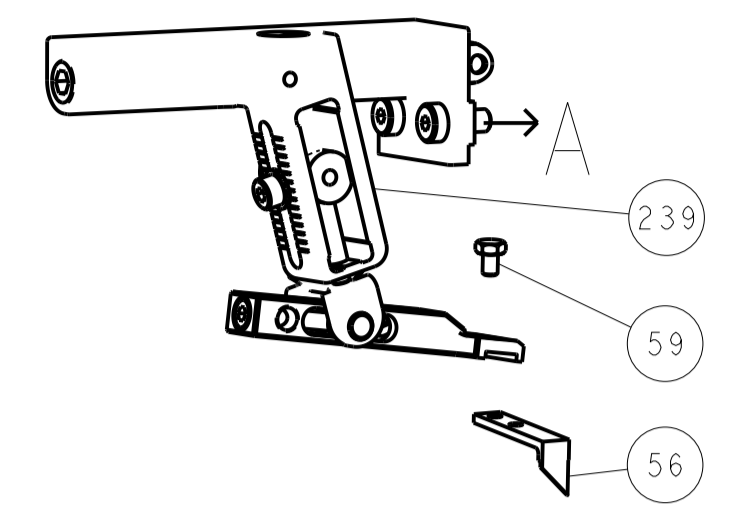
-	1	1	1	1	2119782-1	FINE ADJUST HEAD ASM, PACIFIC STYLE	251			
-	-	-	1	-	2119640-1	PUSH ROD, AIR FEED	250			
-	-	-	1	-	2079988-1	BUSHING, LCH5-12, MISUMI	249			
-	1	1	1	1	1-22279-3	SPRING, COMPRESSION	246			
-	1	1	1	1	2119082-6	CAM, SNAIL, INSULATION ADJUSTMENT	244			
-	1	1	1	1	2079764-1	WASHER, WAVE SPRING, CREST-TO-CREST	243			
-	1	1	1	1	2119083-1	RETAINER, INSULATION DIAL	242			
-	1	1	1	1	7-18023-7	SCR, SKT HD CAP M3 X 4.0	241			
-	-	2	-	-	2168400-6	SHCS, LOW HEAD, RoHS, M5 X 16	240			
-	-	-	-	1	2119580-1	MECHANICAL FEED ASSEMBLY	239			
-	-	-	1	-	2063440-1	AIR FEED MODULE	238			
-	-	1	-	-	2119740-2	TAG, IDENTIFICATION	213			
-	-	1	-	-	1901094-3	SPACER, FEEDER	198			
-	-	-	2	-	21045-3	RING, RETAIN, EXTERN, 3/16 CRESCENT	172			
-	1	1	1	1	994969-1	MAGNET, RARE EARTH HIGH ENERGY	166			
-	REF	REF	REF	REF	994970-2	COUNTER, MAGNETIC	164			
-	-	-	1	-	240638-1	SPRING, FEED FINGER	163			
-	1	1	1	1	8-21084-1	O-RING, .801 ID, .070 DIA, MAT.	152			
-	-	-	1	-	2119641-2	FEED CAM, AIR FEED	151			
-	1	1	1	1	2119798-2	DETENT PIN	145			
-	1	1	1	1	2079383-8	SCR, BHSC, RoHS (M4 X 16)	144			
-	4	4	4	4	2168400-5	SHCS, LOW HEAD, RoHS, M4 X 20	143			
-	-	-	-	1	2119653-2	FEED CAM, POST FEED	142			
-	1	1	1	1	1-2119656-0	APPLICATOR BASIC ASSEMBLY, SF	141			
-	1	1	1	1	2119650-1	RAM, ASIAN STYLE, SIDE FEED	140			
-	1	1	1	1	2119092-2	BOLT, ADJUSTMENT	139			
-	-	-	1	-	3-23627-7	PIN, RETAIN, GRVD, 3/16 X .854	137			
-	-	-	1	-	2119799-1	HOLDER, FEED FINGER, AF	136			
-	-	REF	-	-	SEE NOTE 4	MEMORY CHIP, PROGRAMMED	135			
-	-	1	-	-	1633743-1	SERVO FEED LATCH ASM	133			
-	2	2	2	2	1-18028-2	WASHER, FLAT, REG M4	119			
-	-	REF	-	-	2119944-1	FEED FINGER ASSEMBLY, SF	117			
-	1	1	1	1	455888-6	SPACER, CRIMPER	82			
-	1	1	1	1	2119956-1	DOCUMENTATION PACKAGE	71			
-	1	-	1	1	2119740-1	TAG, IDENTIFICATION	67			
-	2	2	2	2	2168078-1	SCREW, DRIVE, RH, RoHS, 2 x .188	66			
-	1	1	1	1	2119793-1	LIMITER, ADJUSTMENT BOLT	63			
-	3	3	3	3	992763-5	SCR, SET, SOC, CONE POINT, M3 X 4.0	62			
-	-	-	1	1	5-18022-5	SCR, HEX HD CAP, M4 X 6.0	59			
-	-	-	1	1	1338685-1	PAWL, FEED	56			
-	2	2	2	2	1-2168083-0	SCR, SKT HD CAP, RoHS, M4 X 10	53			
-	1	1	1	1	5018030-1	NUT, HEX, REG, RoHS, M3	52			
-	1	1	1	1	811242-5	BUMPER, HOLD DOWN	51			
-	1	1	1	1	690753-2	SPACER, TONKER	50			
-	-	-	1	2	18023-9	SCR, SKT HD CAP M4 X 6.0	49			
-	-	-	-	1	2119652-1	FEED CAM, PRE FEED	48			
-	1	1	1	1	2079383-7	SCR, BHSC, RoHS (M8 X 25)	41			
-	1	1	1	1	2119645-1	DISC, NUMBERED FA WIRE ADJUSTMENT	40			
-	1	1	1	1	2119957-1	APPLICATOR SHIM PACK	39			
-	1	1	1	1	2119644-1	RAM WASHER, PRECISION	38			
-	1	1	1	1	1752356-3	SUPPORT, TERMINAL	34			
-	2	2	2	2	2079383-5	SCR, BHSC, RoHS (M4 X 20)	33			
-	1	1	1	1	2161328-1	HEX HEAD, FLANGED, M5 X 8mm LONG	32			
-	1	1	1	1	1-1320908-0	SPACER, STRIP GUIDE	30			
-	1	1	1	1	2119959-4	ASSEMBLY, STRIP GUIDE	29			
-	1	1	1	1	1-455888-0	SPACER, CRIMPER	28			
-	1	1	1	1	1320928-2	STRIP GUIDE	24			
-	1	1	1	1	240792-2	DRAG, TERMINAL	23			
-	1	1	1	1	2168083-2	SCR, SKT HD CAP, RoHS, M4 X 8.0	21			
-	1	1	1	1	2119533-1	STRIPPER, SIDE FEED	19			
-	1	1	1	1	2119806-1	INSERT, SHEAR	13			
-	1	1	1	1	3-22280-3	SPRING, COMPRESSION	12			
-	1	1	1	1	1-356885-4	STOP, SHEAR	11			
-	1	1	1	1	2119805-1	SHEAR HOLDER, FRONT	10			
-	1	1	1	1	454276-5	FLOATING SHEAR, FRONT	9			
-	1	1	1	1	9-1633131-3	ANVIL, COMBINATION .080	8			
-	-	-	-	-	-	-	7			
-	-	-	-	-	-	-	6			
-	1	1	1	1	2119757-8	DEPRESSOR, SHEAR	5			
-	1	1	1	1	1-238011-8	BLOCK, CRIMPER SPACER	4			
-	1	1	1	1	3-2119582-7	CRIMPER, INSULATION F PREMIUM	3			
-	1	1	1	1	455888-7	SPACER, CRIMPER	2			
-	1	1	1	1	2-456405-9	CRIMPER, WIRE PREMIUM	1			
-77	-27	-25	-22	-21	PART NO	DESCRIPTION	ITEM NO			

PACIFIC VERSION  
 Shown on sheets 3 of 4 & 4 of 4  
 (Atlantic version shown on sheets 1 of 4 & 2 of 4)

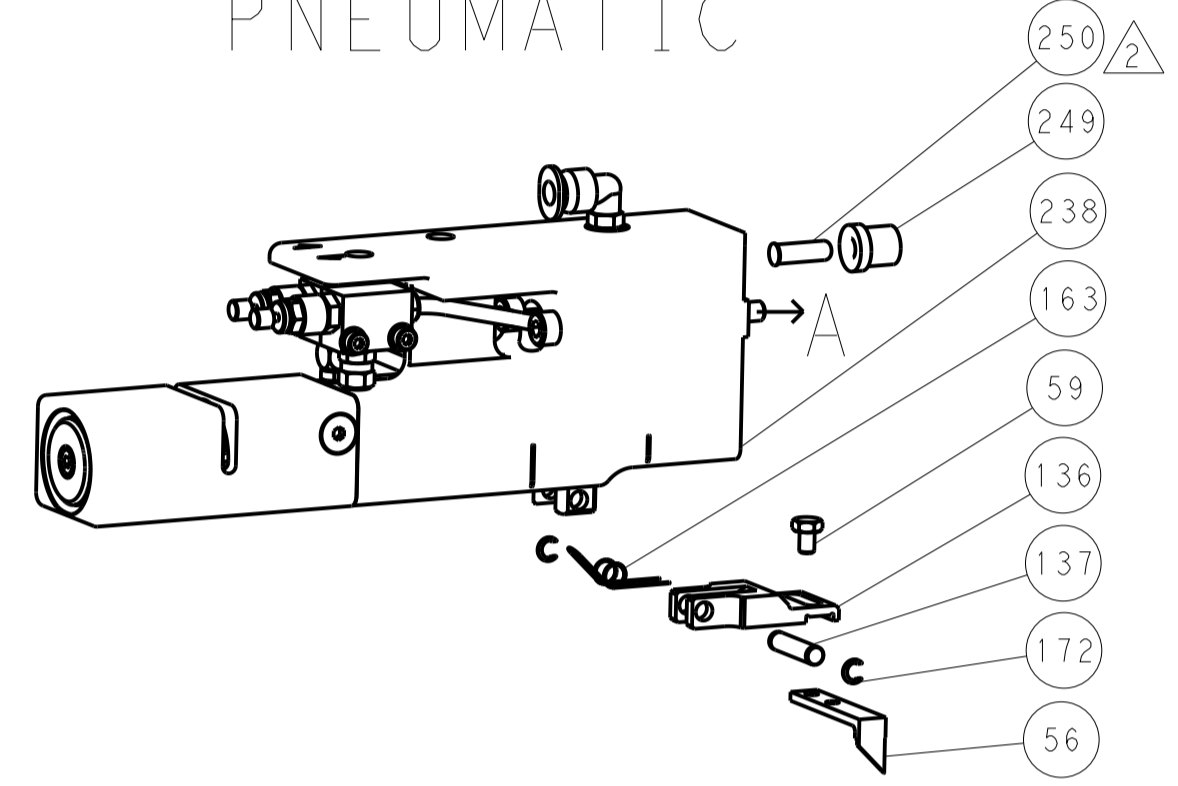
DIMENSIONS: mm	TOLERANCES UNLESS OTHERWISE SPECIFIED: 0 PLC ±.5 1 PLC ±0.5 2 PLC ±0.13 3 PLC ±0.013 4 PLC ±0.001 ANGLES ±.1	DWG: 03AUG2012 CHK: G.BAILEY APVD: S.XI 03AUG2012	NAME: Ocean Side Feed Applicator SIZE: A1 CAGE CODE: 00779 DRAWING NO: 2151593	RESTRICTED TO: B
Customer Accessible Production Drawing				

LOC		DIST		REVISIONS			
A	66	P	LTM	DESCRIPTION	DATE	OWN	APVD
		-		SEE SHEET 1			

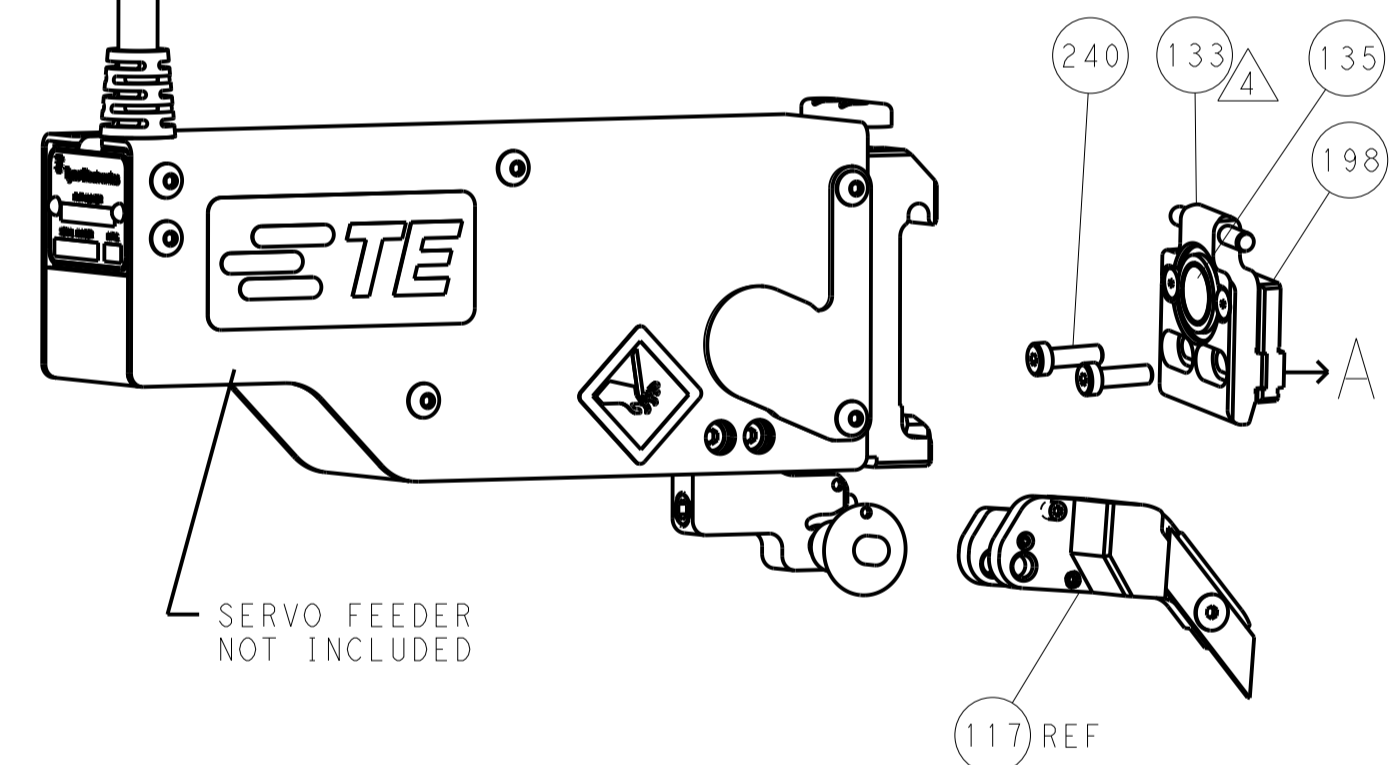
# FEED TYPE MECHANICAL



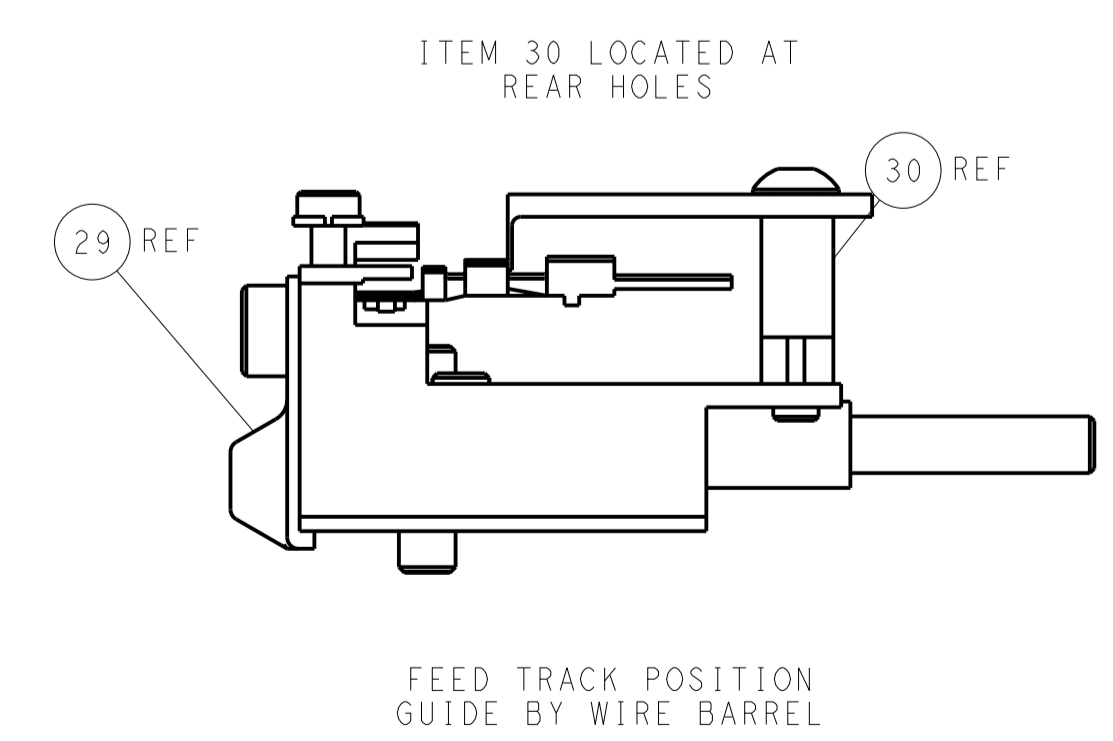
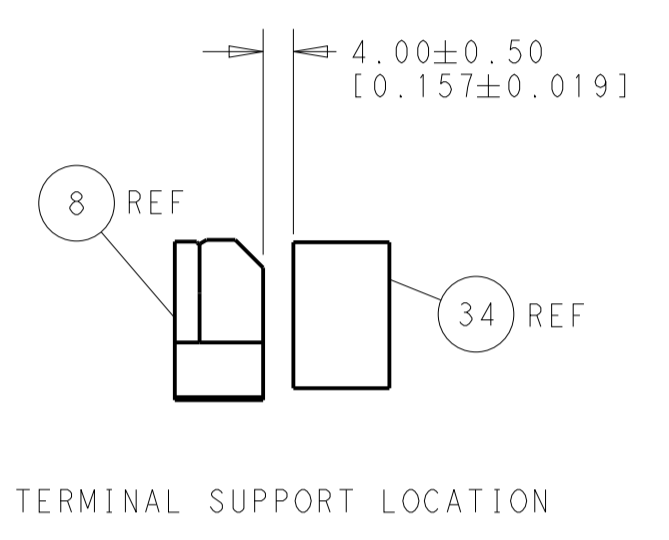
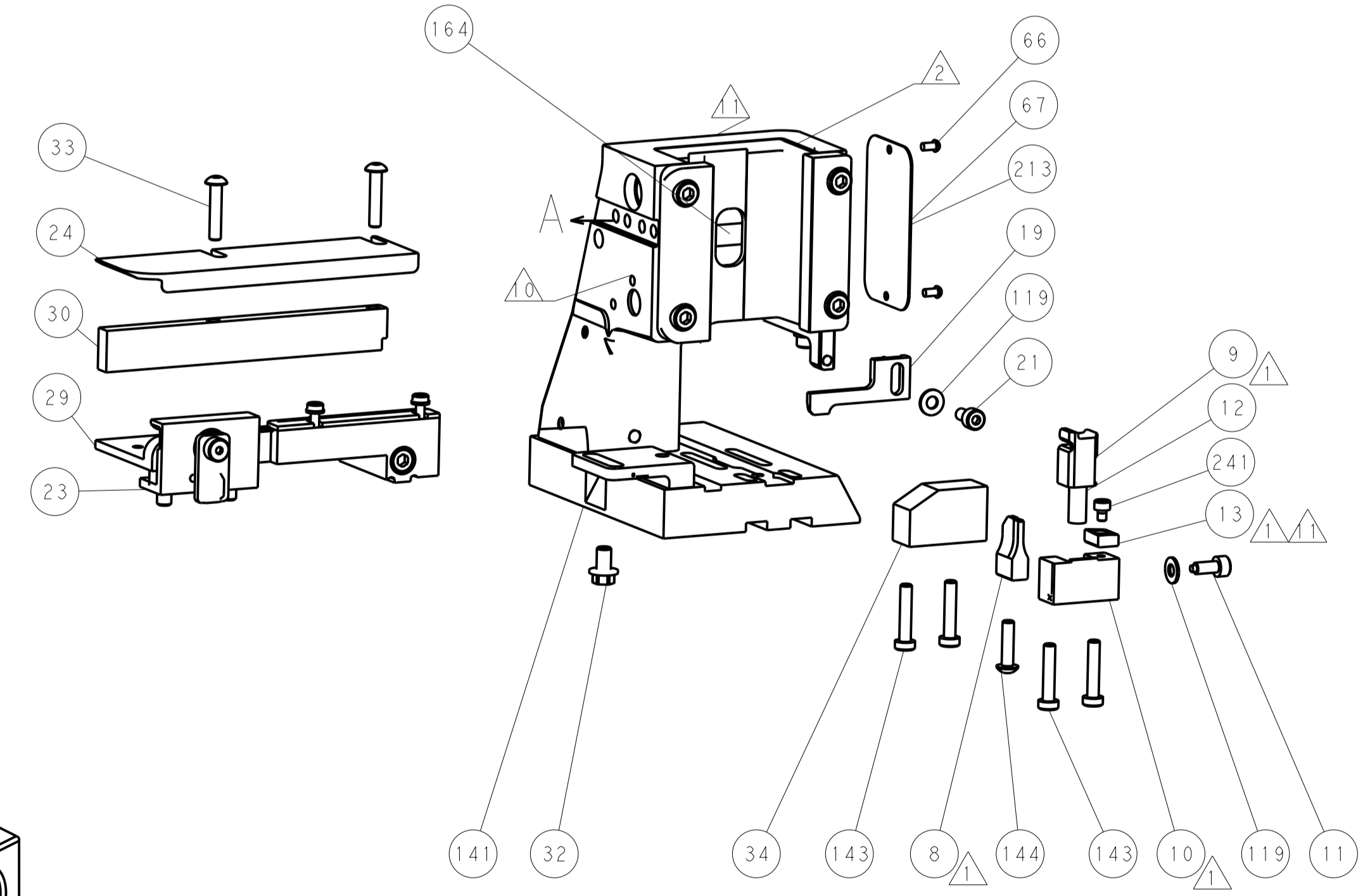
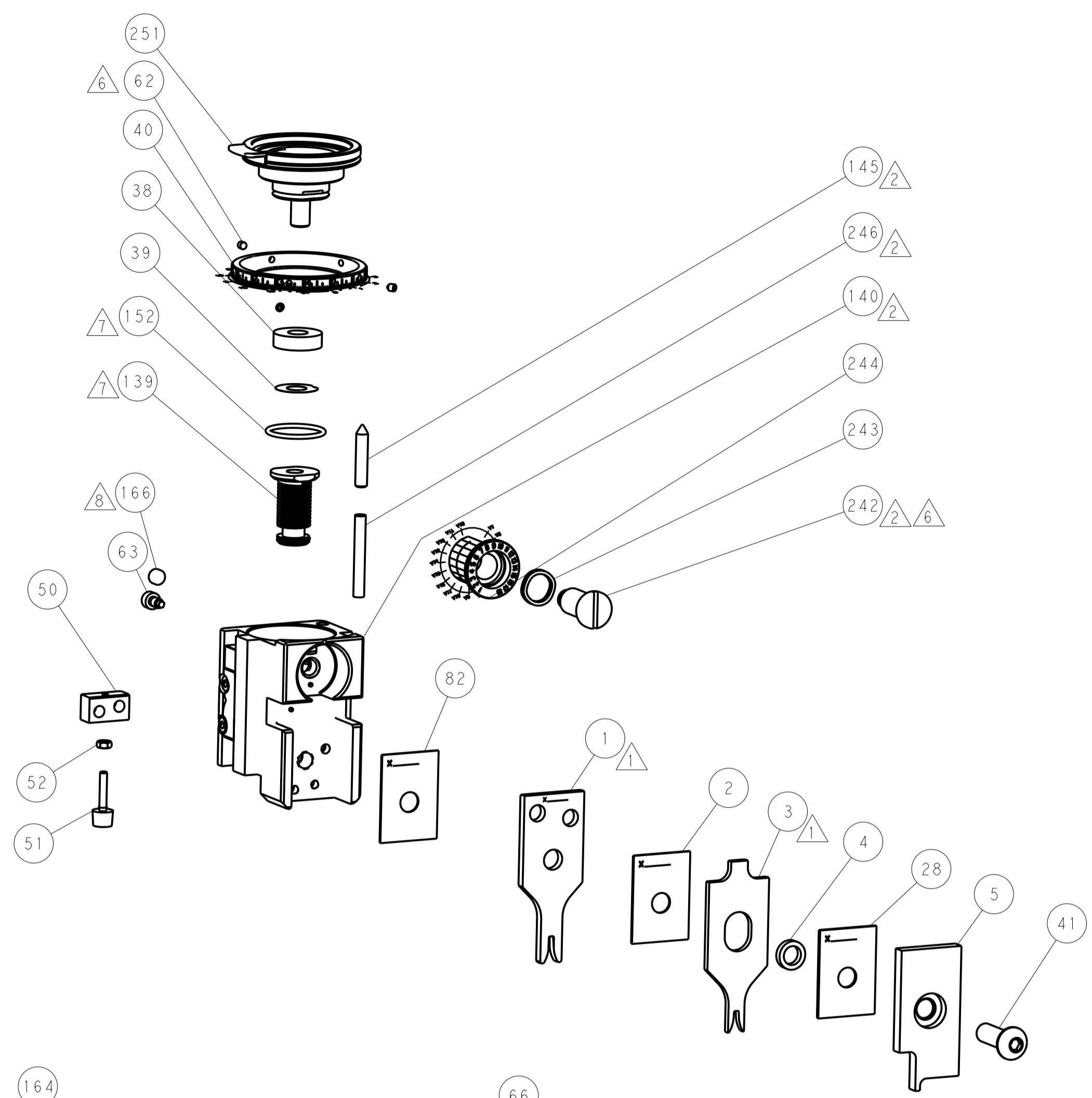
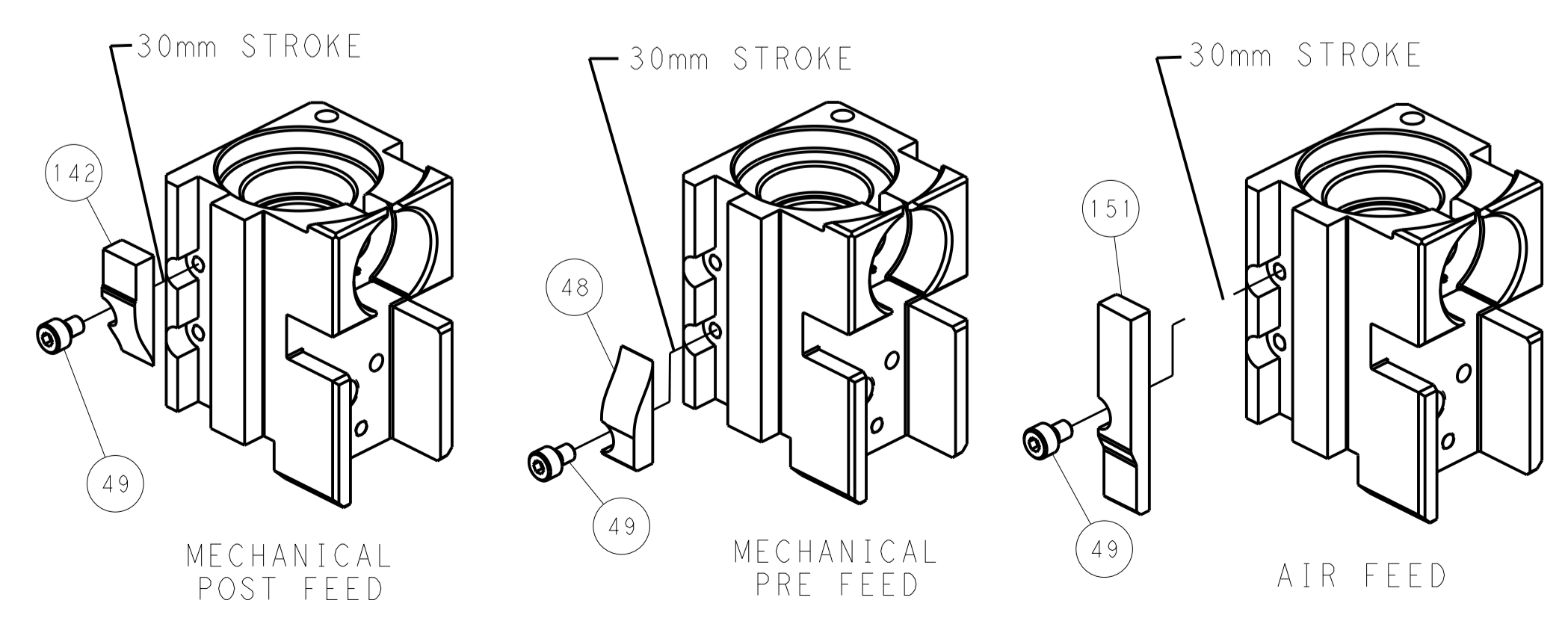
# PNEUMATIC



# SERVO LATCH PLATE



# CAM POSITIONS



**PACIFIC VERSION**  
 Shown on sheets 3 of 4 & 4 of 4  
 (Atlantic version shown on sheets 1 of 4 & 2 of 4)

DIMENSIONS:		TOLERANCES UNLESS OTHERWISE SPECIFIED:		DWG: Y. YIN 03AUG2012		REV: G. BAILEY 03AUG2012		NAME: Ocean Side Feed Applicator	
mm	0 PLC ±0.5	1 PLC ±0.5	2 PLC ±0.13	3 PLC ±0.013	4 PLC ±0.001	APVD: S. XI 03AUG2012	PRODUCT SPEC:	SIZE: A1	CAGE CODE: 00779
MATERIAL:	FINISH:	WEIGHT:	ANGLES:	RESTRICTED TO:	Customer Accessible Production Drawing				
SCALE: 1:2		SHEET: 4 of 4		REV: B		©=2151593			