

**ACTIVE  
 DUAL BAND HELIX  
 STUB ANTENNA**

**RST-HADB-GPS-GLONASS-01**

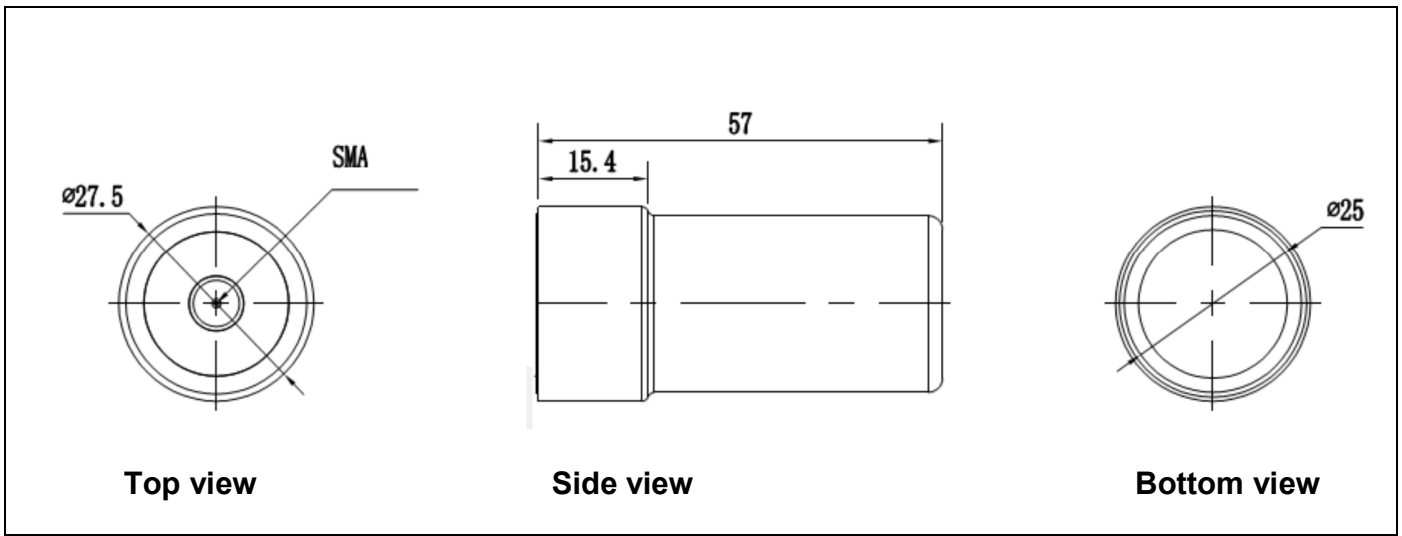


■ **SPECIFICATIONS**

<b>ANTENNA</b>	
<b>PARAMETER</b>	<b>VALUE</b>
Frequency Range	GPS: 1575.42 ±15 MHz / 1227 ±12 MHz
	GLONASS: 1598~1609 MHz / 1242~1252 MHz
Output VSWR, max	2.0
Impedance	50 Ω
Peak Gain	3 dBi
Azimuth Coverage	360°
Axial Ratio, max	3 dB
Polarization	RHCP
Connector Type	SMA
Weight, Max – g	25

<b>LNA</b>	
<b>PARAMETER</b>	<b>VALUE</b>
DC Voltage	3.0 to 12.0 V
DC Current, max	35 mA
LNA Gain	33 ± 2 dB
Noise Figure, max	2.0 dB
Ripple	±2 dB
Output VSWR, max	2.0

**MECHANICAL SPECIFICATIONS**



**ENVIRONMENTAL SPECIFICATIONS**

PARAMETER	VALUE
Operating Temperature Range	-40 to +85°C
Storage Temperature Range	-55 to +85°C
Humidity	95%, Non-condensing

May, 2016