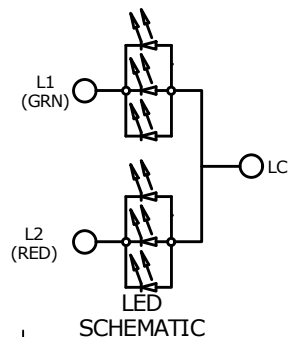
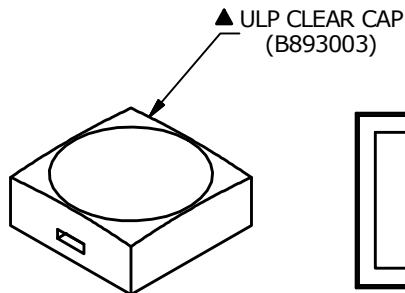


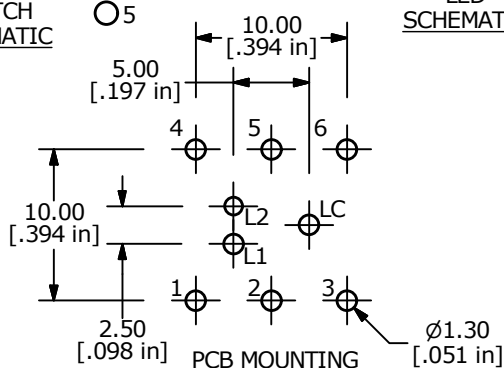
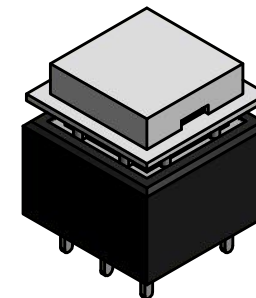
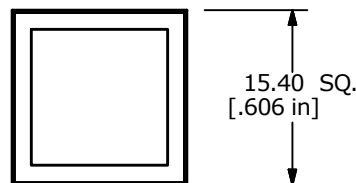
SWITCH SCHEMATIC



LED SCHEMATIC



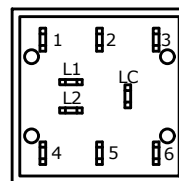
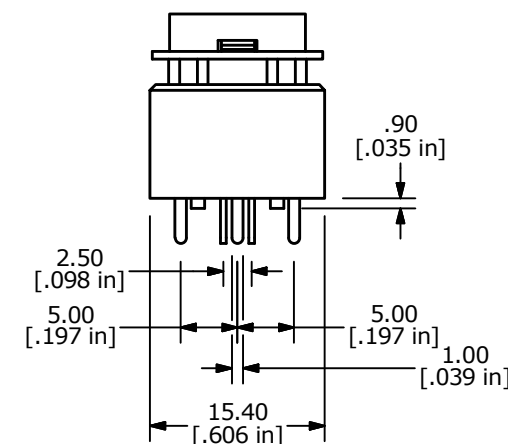
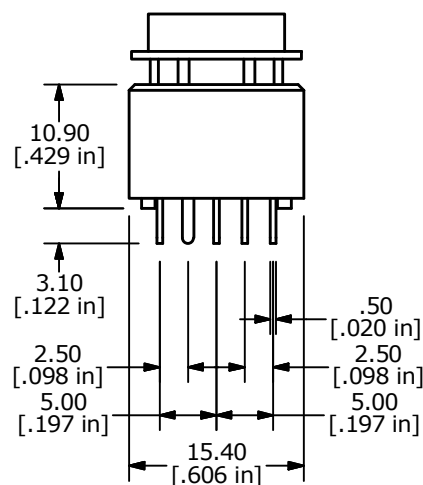
▲ CAP: SEE NOTE 17



PCB MOUNTING

NOTES:

1. ALL DIMENSIONS IN MM
2. GENERAL TOLERANCE: X.X=±0.4  
X.XX=±0.25
3. TERM. NOS. FOR REFERENCE ONLY.
- ▲ 4. CONTACT RATING: 0.1A MAX. @ 28VDC
5. CONTACT MATERIAL: GOLD
6. ELECTRICAL LIFE: 200,000 Typical
7. OPERATING LIFE: 200,000 CYCLES TYP.
8. OPERATING TEMP: -40°C TO +85°C
9. OPERATING FORCE: 300 ± 150 gf
10. CONTACT RESISTANCE:  
100 MILLI-OHM INITIAL TYP. MAX.
11. INSULATION RESISTANCE:  
500VDC, 100 MΩ MIN.
12. DIELECTRIC STRENGTH:  
1000 VAC FOR 1 MINUTE
13. TRAVEL TO MAKE: 2.20mm ± 0.2 LATCHING
14. 2011/65/EU (ROHS) COMPLIANT
15. ▲ DENOTES CRITICAL PARAMETER
- ▲ 16. LED COLOR: GRN: 3 CHIPS; 2.1VDC, @20mA TYP.  
RED: 3 CHIPS; 1.95VDC, @20mA TYP.
17. SPECIAL PACKAGE: CAPS SHIPPED BULK, 50 PIECES PER BAG. (B893003)



H	22342	UPDATED CONTACT RATING	9/12/16	MJR
G	19751	UPDATE DRAWING	03/10/11	BMA
REV	PCR NO	DESCRIPTION	DATE	BY

TITLE ULP22EEP1RSSCL1GRNRED SPECIAL				
SCALE	DATE	DR	DWG	REV
3:2	3/12/2008	BF	B800010	H

THE INFORMATION CONTAINED IN THIS DOCUMENT IS PROPRIETARY TO E-SWITCH AND IS NOT TO BE COPIED OR TRANSFERRED