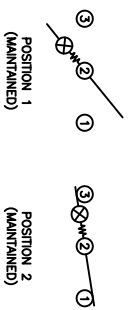


SCHEMATIC



SPECIFICATIONS

FUNCTION:
1P1T OFF-ON

RATINGS:
20A 125VAC [CURRa]
16A 250VAC [CURRa]
3/4HP 125/250VAC [CURRa]

EN 61058-1:2002 and DIN/VDE 0630:2003-03 (40017440):
16(4)A 250V~ 1E4 μ 185/55 [ENEC10, VDE]
10(2)A 250V~ 5E4 μ 185/55 [ENEC10, VDE]
20(6)A 250V~ 1E4 μ 1125/55 [ENEC10, VDE]

ILLUMINATION VOLTAGE:
125V

CONTACT RESISTANCE:
Initial: 20mΩ Max.

INSULATION RESISTANCE:
100MΩ Min. at 500VDC

DIELECTRIC STRENGTH:
1,000VAC for 1 Minute

ELECTRICAL LIFE:
6,000 Cycles [CURRa, CSA]
10,000 Cycles [ENEC10, VDE: 16(4)A 250V~]
50,000 Cycles [ENEC10, VDE: 10(2)A 250V~]

TEMPERATURE:
Operating: -20°C to 105°C [CURRa, CSA]
Operating: -20°C to 85°C [ENEC10, VDE: 16(4)A 250V~]
Operating: -20°C to 125°C [ENEC10, VDE: 20(6)A 250V~]

APPROVALS:



COLORS AND MARKINGS

BODY:
Black

ACTUATOR:
Transparent Red

MARKINGS:
I/O Vertical (1)

MARKING COLOR:
White

MATERIALS

BODY:
Polyamide 6/6 (PA66), UL94 V-2

ACTUATOR:
Polycarbonate (PC), UL94 V-2

LAMP CARRIER:
Polyamide 6/6 (PA66), UL94 V-2

LAMP:
Neon Bulb

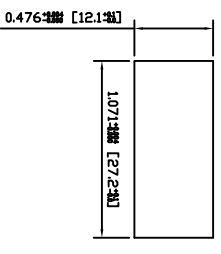
LAMP SPRING:
Steel

SPRING:
Steel

CONTACTS:
Silver Plated Copper

TERMINALS:
Silver Plated Copper
Silver Plated Brass

SUGGESTED PANEL CUTOUT



ACTUATOR	A	09/08/13	CAB
BODY	B	10/05/10	CAB
COLORS	A <th>09/08/13</th> <th>CAB</th>	09/08/13	CAB
MATERIALS	A <th>09/08/13</th> <th>CAB</th>	09/08/13	CAB
SPECIFICATIONS	B <th>10/01/27</th> <th>CAB</th>	10/01/27	CAB
REFERENCE	REV. <th>DATE</th> <th>BY</th>	DATE	BY

1

2

3

4

5

6

7

8

THE INFORMATION CONTAINED IN THIS DOCUMENT IS PROPRIETARY TO E-SWITCH AND IS NOT TO BE COPIED OR TRANSMITTED

INITIAL RELEASE DESCRIPTION	A
21312 <td>REV. </td>	REV.

DATE	DATE	DATE	DATE
11/22/13	11/22/13	11/22/13	11/22/13

SCALE	SCALE
±0.008 [±0.2] / ±1'	PROJECTION

INCHES [MILLIMETERS]
±0.008 [±0.2] / ±1'

RSC241D1021-116

14-RSC241D1021116

NOVEMBER 22, 2013

REVISION A