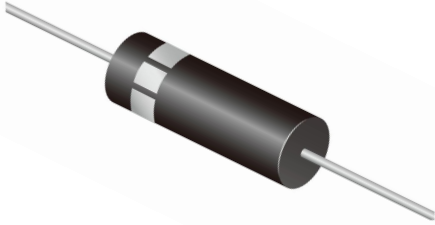


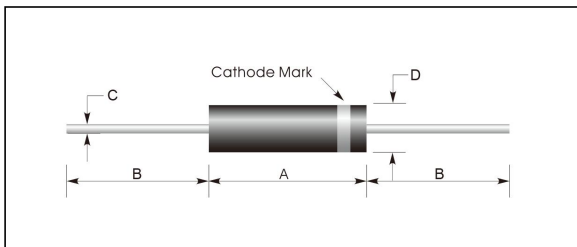
CL08-12T High Voltage Diode



FEATURES

- Low leakage, high surge capability
- High voltage, fast recovery rectifier
- Tj: -40°C ~ +150°C
- Polyimide passivation technology
- Epoxy resin molding, compact encapsulation
- ROHS compliant

DEVICE ELECTRICAL CHARACTERISTICS (25°C ambient temperature unless stated otherwise)	CONDITIONS	SYMBOL	CL08-12T
Repetitive Peak Reverse Voltage		V_{RRM}	12KV
Average Forward Current		I_{AV}	500mA
Non-Repetitive Peak Forward Current		I_{FSM}	40A
Allowable Junction Temperature		T_j	125°C
Storage Temperature Range		T_{stg}	-40~125°C
Maximum Forward Voltage Drop	$I_F=500mA, T_a=25\text{ }^\circ\text{C}$	V_F	21.0V
Maximum Reverse Recovery Time	$I_F=50mA, I_R=100mA$	trr	100nS
Maximum Reverse Current	$V_R=V_{RRM}, T_a=25\text{ }^\circ\text{C}$	I_{R1}	2.0μA
Maximum Reverse Current	$V_R=V_{RRM}, T_a=100\text{ }^\circ\text{C}$	I_{R2}	50.0μA



SYMBOL	CL08-12T (Unit : mm)
A	22.0
D	Φ7.5
B	22
C	Φ1.2