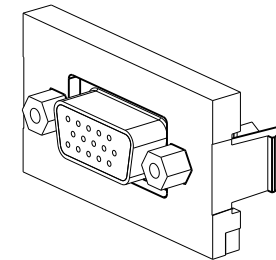
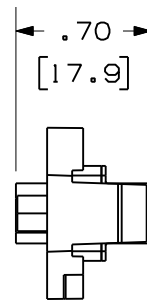
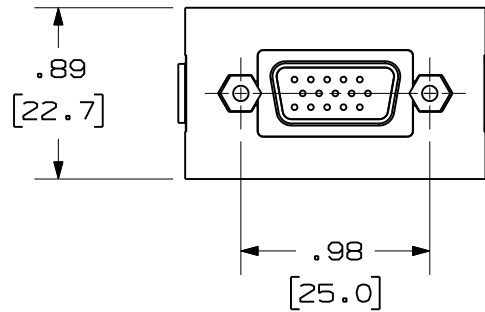
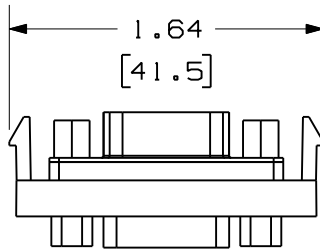


THIS COPY IS PROVIDED ON A RESTRICTED BASIS AND IS NOT TO BE USED IN ANY WAY DETRIMENTAL TO THE INTERESTS OF PANDUIT CORP.

| | |
|--------------|------------------|
| PANDUIT P/N | WEIGHT |
| CHD15HDC** | .28 LB/10 PCS |
| IAPHD15HDCWH | (125.9 g/10 PCS) |

NOTES:

1. SEE CURRENT CATALOG FOR ADDITIONAL PART NUMBER SUFFIXES TO INDICATE COLOR AND OR PACKAGE QUANTITY.
2. SEE CATALOG FOR COMPLETE LIST OF PARTS APPLICABLE FOR USE WITH THIS PART.
3. DIMENSIONS IN PARENTHESES ARE IN METRIC.
4. PART TO WORK WITH ALL PANDUIT FACEPLATE FRAMES.



| | | | | |
|--|---------|------------------|--------------------------|------|
| MODEL FILENAME | | DRAWING FILENAME | | SIZE |
| | | M01095AB_DC/02B | | A |
| MINI-COM 15 PIN HIGH DENSITY SVGA 1/3 INSERT COUPLER CUSTOMER DRAWING | | | | |
| PANDUIT [®] TINLEY PARK, IL 60487 | | | I.I. NUMBER | |
| | | | PRODUCT SPEC/ PKG SPEC | |
| THIRD ANGLE PROJECTION | | | ASSY METHOD/ TEST METHOD | |
| | | | SCALE | |
| ALL DIMENSIONS ARE GIVEN IN INCHES, UNLESS OTHERWISE SPECIFIED. DIMENSIONAL TOLERANCES ARE: (.X) ± (.XXX) ±.010(.3) (.XX) ±.03(.8) ANGLES ± | | NONE | | |
| DRAWN BY | JSP | | REVIEW DRAWING NUMBERS | |
| DATE | 1-26-01 | | PART NO. | |
| CHK'D | PBD | | SEE TABLE | |
| REV | | | DRAWING NO. | |
| | | | 01095-07 | |

| REV | DATE | BY | CHK | DESCRIPTION | ECN | R | CUST | SUP | OTH |
|-----|---------|-----|-----|--|----------|-----|------|-----|-----|
| 2 | 6-6-11 | BJN | | B. ADDED SUPPLEMENTAL P/N IAPHD15HDCWH | 01095-07 | | | | |
| 1 | 2-16-01 | JSP | PBD | A. ADDED "C" TO PART NO. | 01095-07 | PBD | PBD | | |
| R | 1-26-01 | JSP | PBD | RELEASED TO PRODUCTION. | 01095-07 | PBD | | | |