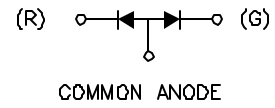
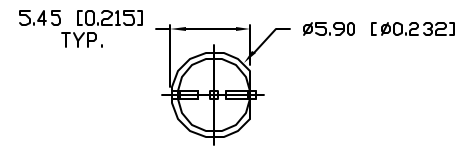
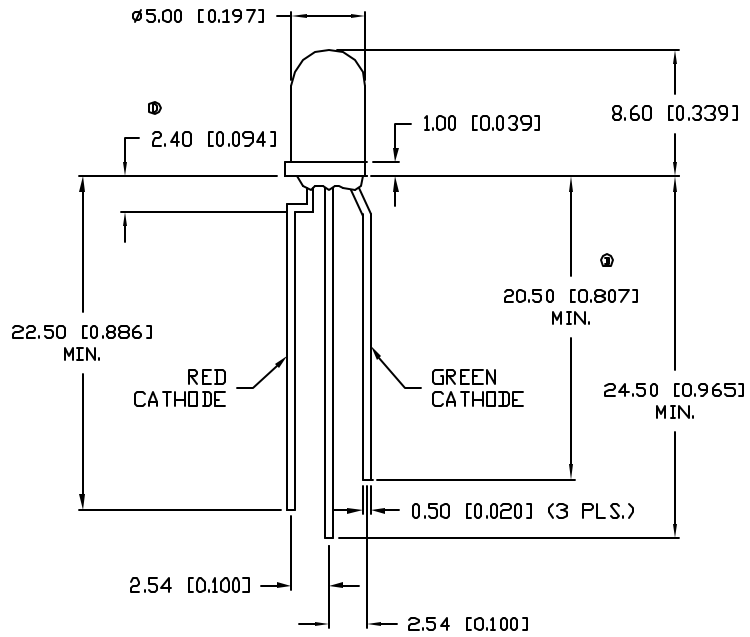


| DATE    | REVISIONS                    | REV |
|---------|------------------------------|-----|
| 7-9-92  | REDRAWN.                     | A   |
| 8-13-94 | CHANGED SAFE OPER. SPECS.    | B   |
| 4-5-95  | CHANGED SPECS.               | C   |
| 9-7-95  | CORRECTED DIMS. WHERE NOTED. | D   |
| 3-8-96  | E.C.N. #10112./              | E   |
| 2-27-98 | E.C.N. #10BRDR. & REDRAWN./  | F   |

DRAWING NUMBER  
SSL-LX5099IGW-CA  
REV  
F



UNLESS OTHERWISE SPECIFIED TOLERANCE IS ±.25mm (±0.010")

ELECTRO-OPTICAL CHARACTERISTICS  $T_A=25^{\circ}\text{C}$   $I_f=20\text{mA}$

| PARAMETER            | MIN                  | TYP         | MAX     | UNITS    | TEST COND            |
|----------------------|----------------------|-------------|---------|----------|----------------------|
| PEAK WAVELENGTH      |                      | 635 (RED)   |         | nm       |                      |
|                      |                      | 565 (GREEN) |         | nm       |                      |
| FORWARD VOLTAGE(R/G) |                      | 2.0/2.2     | 2.5/2.6 | $V_f$    |                      |
| REVERSE VOLTAGE      | 5.0                  |             |         | $V_r$    | $I_f=100\mu\text{A}$ |
| AXIAL INTENSITY      |                      | 6           |         | mcd      | $I_f=20\text{mA}$    |
| VIEWING ANGLE        |                      | 60          |         | 2x theta |                      |
| EMITTED COLOR:       | RED/GREEN            |             |         |          |                      |
| EPOXY LENS FINISH:   | MILKY WHITE DIFFUSED |             |         |          |                      |

⊙ LIMITS OF SAFE OPERATION AT 25°C PER CHIP

| PARAMETER                  | COLORS | MAX        | UNITS      |
|----------------------------|--------|------------|------------|
| PEAK FORWARD CURRENT*      |        | 150        | mA         |
| STEADY CURRENT             | (R/G)  | 30/25      | mA         |
| POWER DISSIPATION          |        | 105        | mW         |
| DERATE FROM 25°C           |        | -1.2       | mW/°C      |
| ⊙ OPERATING, STORAGE TEMP. |        | -40 TO +85 | °C         |
| ⊙ SOLDERING TEMP.          |        | +260       | °C         |
| ⊙ 2.0mm FROM BODY          |        |            | 3 SEC. MAX |

\*  $t < 10\mu\text{s}$

RELIABILITY NOTE

OUR MANY YEARS OF EXPERIENCE DATA ACCUMULATION INDICATE THAT SOLDER HEAT IS A MAJOR CAUSE OF EARLY AND FUTURE FAILURE. PLEASE PAY ATTENTION TO YOUR SOLDERING PROCESS.



290 E. HELLEN ROAD  
PALATINE, ILLINOIS 60067  
(847) 359-2790

CONFIDENTIAL INFORMATION  
THE INFORMATION CONTAINED IN THIS DOCUMENT IS THE PROPERTY OF LUMEX INCORPORATED. EXCEPT AS SPECIFICALLY AUTHORIZED IN WRITING BY LUMEX INCORPORATED, THE HOLDER OF THIS DOCUMENT SHALL KEEP ALL INFORMATION CONTAINED HEREIN CONFIDENTIAL AND SHALL PROTECT SAME IN WHOLE OR IN PART FROM DISCLOSURE AND DISSEMINATION TO ALL THIRD PARTIES.

|               |      |        |       |
|---------------|------|--------|-------|
| DATE: 4-23-90 | DWN: | CHK'D: | APPD: |
| SCALE: N/A    |      |        |       |

T-5mm (T-1 3/4) LED BICOLOR RED/GREEN,  
COMMON ANODE.

|             |                                    |          |
|-------------|------------------------------------|----------|
| PAGE 1 OF 1 | DRAWING NUMBER<br>SSL-LX5099IGW-CA | REV<br>F |
|-------------|------------------------------------|----------|