

VOLTAGE CONTROLLED OSCILLATOR

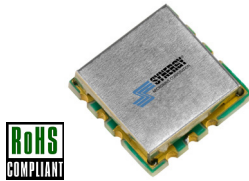
SURFACE MOUNT MODEL: DCO230245-5

OPTIMIZED BANDWIDTH

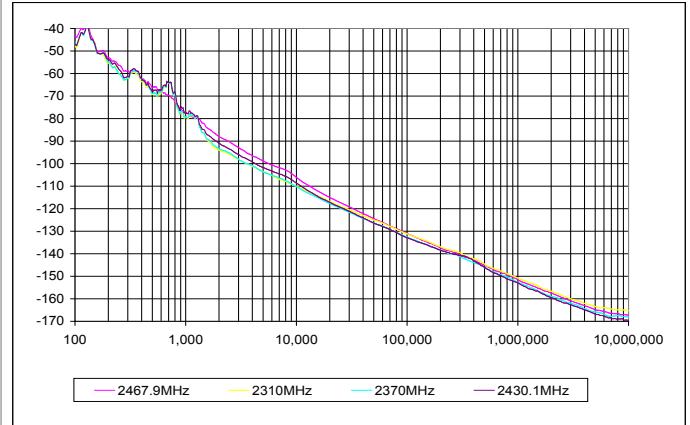
2300 - 2450 MHz

FEATURES:

- ▶ Miniature Size, Surface Mount (0.3" x 0.3")
- ▶ Exceptional Phase Noise Performance
- ▶ Fast Tuning
- ▶ Planar Resonator Construction



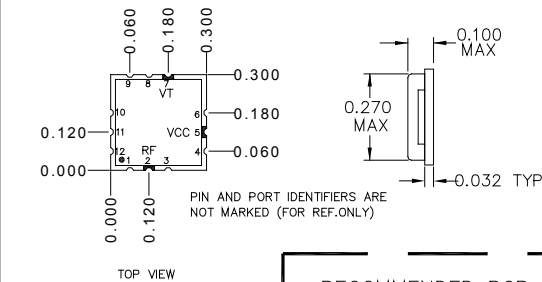
Phase Noise



SPECIFICATIONS (Rev. A 01/09/14)

Frequency	2300 - 2450 MHz	
Tuning Voltage	See table below.	
Bias Voltage	+5 VDC @ 35 mA (Max.)	
Output Power	+4 dBm (Min.)	
Tuning Sensitivity	6 - 14 MHz/V (Typ.)	
Output Impedance	50 Ohms (Nom.)	
Harmonic Suppression	12 dB (Typ.)	
Frequency Pulling	2 MHz (Typ. @ 1.75:1 VSWR)	
Frequency Pushing	1 MHz/V (Typ.)	
Tuning Port Capacitance	55 pF (Typ.)	
Typical Phase Noise	Offset	dBc/Hz
	10 kHz	-102
	100 kHz	-122
Operating Temperature Range	-40 to +105 °C	

Package # 343

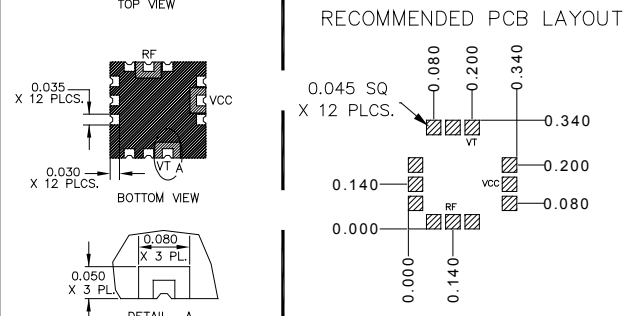


Guaranteed Tuning Specifications

Tuning Voltage (V)	Frequency (MHz)
0.5	2300 (Max.)
5	2325 (Min.)
8	2350 (Min.)
11	2375 (Min.)
20	2450 (Min.)

Absolute Maximum Ratings

Storage Temp. Range	-55 to +125 °C
Bias Voltage	+5.5 V
Tuning Voltage	+21 V
DC Voltage Applied to RF Out	± 25 V



PACKAGE MOUNTING: SEE APPLICATION NOTE AN7300 & AN7302

TOLERANCES ON THREE DECIMAL PLACES= ± 0.015

DIMENSIONS ARE IN INCHES. ALL UNLABELED PINS TO BE GROUNDING.

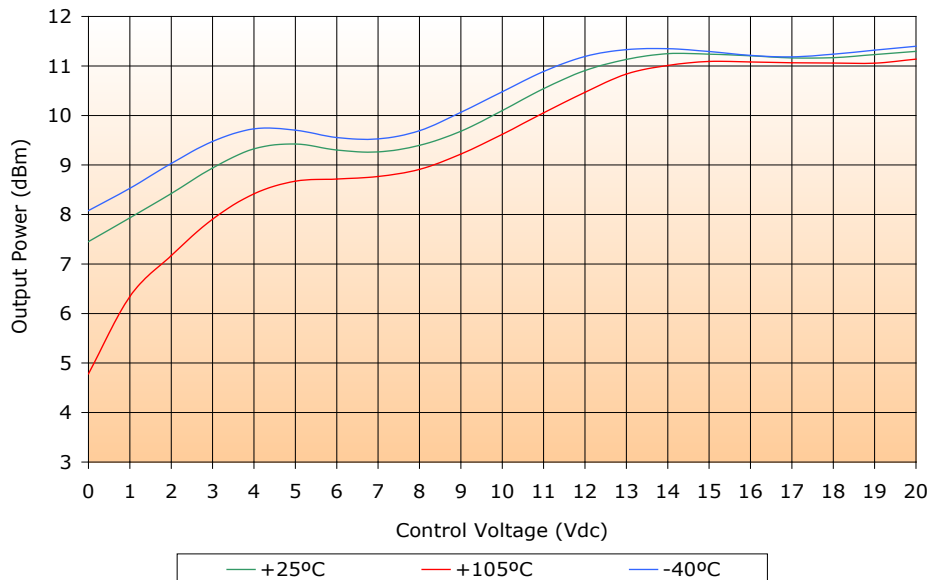
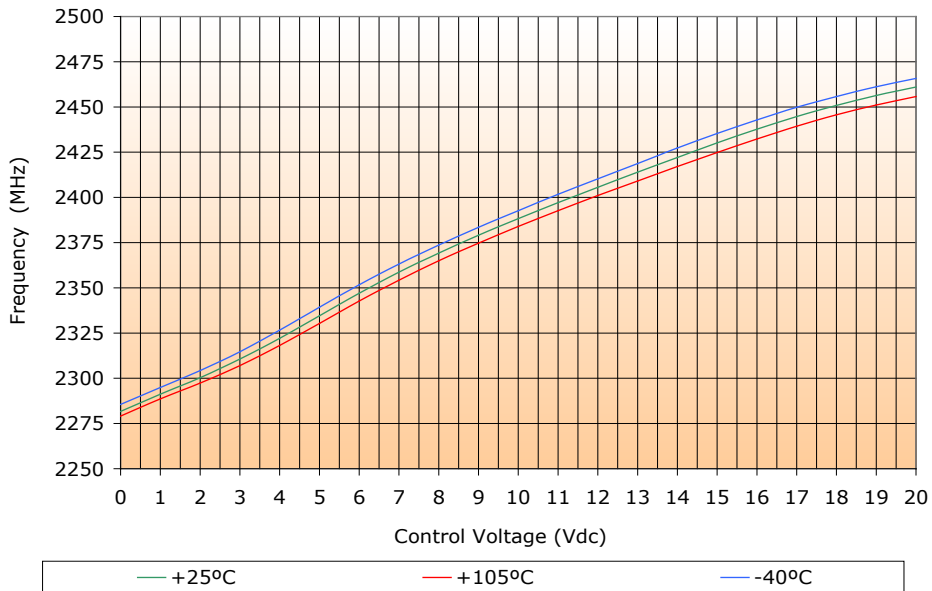
VOLTAGE CONTROLLED OSCILLATOR

SURFACE MOUNT MODEL: DCO230245-5

OPTIMIZED BANDWIDTH

2300 - 2450 MHz

PERFORMANCE PLOTS



VOLTAGE CONTROLLED OSCILLATOR

SURFACE MOUNT MODEL: DCO230245-5

OPTIMIZED BANDWIDTH

2300 - 2450 MHz

PERFORMANCE PLOTS

