

WSA 500 SERIES, 30 WATTS

HIGH EFFICIENCY, COMPACT DESIGN SWITCHMODE TECHNOLOGY



A-CASE

MODEL NUMBER	VDC	AMPS	WATTS
WSA533	3.3	5	16
WSA540	4.0	5	19
WSA545	4.5	5	22
WSA550	5	5	25
WSA555	5.5	4.5	25
WSA560	6	4.15	25
WSA565	6.5	3.8	25
WSA570	7	3.5	25
WSA575	7.5	3.3	25
WSA580	8	3.1	25
WSA590	9	3	27
WSA510	10	2.7	27
WSA511	11	2.5	27
WSA512	12	2.5	30
WSA513	13	2.3	30
WSA514	14	2.15	30
WSA515	15	2	30
WSA516	16	1.85	30
WSA518	18	1.65	30
WSA520	20	1.5	30
WSA522	22	1.35	30
WSA524	24	1.25	30
WSA526	26	1.15	30
WSA528	28	1.07	30
WSA530	30	1	30
WSA532	32	0.94	30
WSA536	36	0.83	30
WSA540	40	0.75	30
WSA544	44	0.68	30
WSA548	48	0.63	30

*Add a suffix, "M" for Medical or leave it blank for non-medical.

UL, cUL, TUV Certified CE marked for European Compliance CEC / DOE EISA 2007 Compliant

Standard Specifications

- Universal Input Voltage: 90-264Vac 47-63Hz class I or II
- 75 to 85% efficiency
- Output Voltage Tolerance: +/-2.5% Typical, +/-5% Max, from Full Load to No Load.
- Operating Temperature: 0 - 40°C
- Maximum Output Ripple:
 - 3.3 - 6V: 50mVp-p
 - 6.1 - 22V: 100mVp-p
 - 22.1 - 32V: 150mVp-p
 - 32.1 - 48V: 250mVp-p
- Designed for Continuous Duty
- Hold-Up Time : 25mS Minimum @ 120 Vin
- Short Circuit and Over Load Protection
- SELV Output
- MTBF Calculated > 100,000 Hours @ 40°C
- 2 Hour Minimum Loaded Burn-in at 40°C Ambient for standard output cord configurations
- Leakage current compliant to IEC60601-1 Category B and BF
- 5 Year Warranty

Available Features

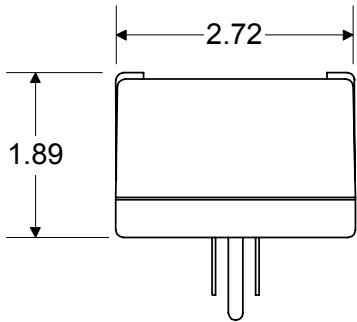
- Expanded Operating Temperatures
- 400 Hz Input Rating
- DC Input Rating
- Additional Noise and/or Surge Protection
- LED Power On Indicator
- Fixed-in-place Input Cord
- Wall Plug-in configuration
- Extended Hold-Up Time
- Output Cord Sets and Connector Configurations
- Case Colors, Markings & Logos
- 16 Hour Burn-in

All specifications are typical at nominal input, full load, and 25°C unless otherwise noted

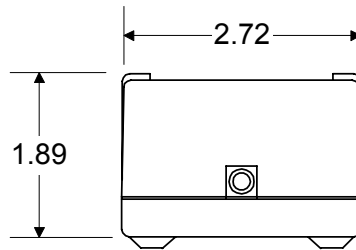
WSA 500 SERIES, 30 WATTS

HIGH EFFICIENCY, COMPACT DESIGN SWITCHMODE TECHNOLOGY

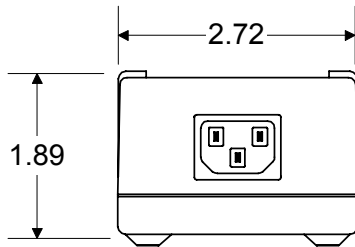
A CASE ENCLOSURE



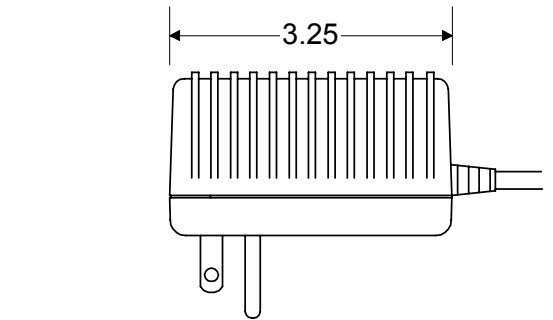
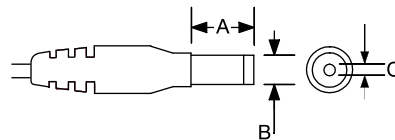
A. WALL PLUG-IN OPTION



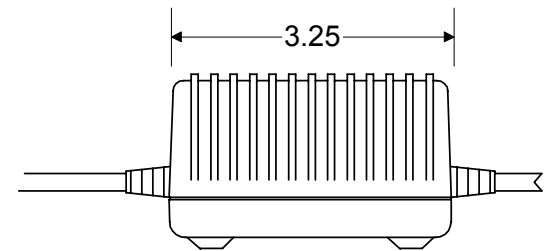
B. INPUT CORD OPTION



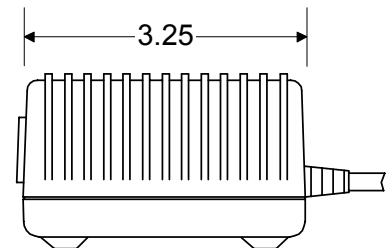
C. IEC 320 OPTION



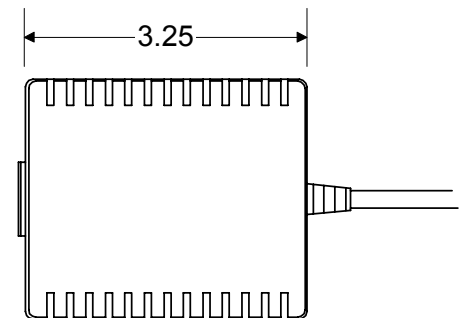
ALSO AVAILABLE WITH INTERNATIONAL PLUG-IN CONFIGURATION



VARIOUS INPUT AND OUTPUT CORD OPTIONS AVAILABLE



IEC 320 OPTION USED FOR MOST INTERNATIONAL APPLICATIONS



TOP SURFACE MARKING AREA = 2.63 X 1.75

Regulatory Compliance

Designed for use with medical, information technology, and general purpose equipment to the following standards: All models are approved to:

- UL 60601-1 / 60950-1
- CSA 22.2 601-1 / 60950-1
- TUV EN 60601-1 / 60950-1
- CE LVD directive
- *cUL Mark

EMC: All models meet European EMC directive and FCC requirements. Meets all EMC requirements from EN60601-1-2.

Emissions: Level B requirements of FCC CFR 47 part 15 and CISPR11 (EN55011) and CISPR22 (EN55022), EN61000-6-3 (light industrial) and line harmonic emissions EN61000-3-2.

Immunity: CISPR24 (EN55024), EN61326 and EN61000-3-2.

Certification records are available upon project request.