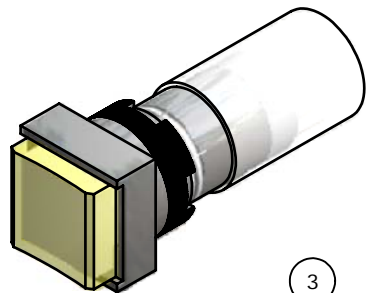
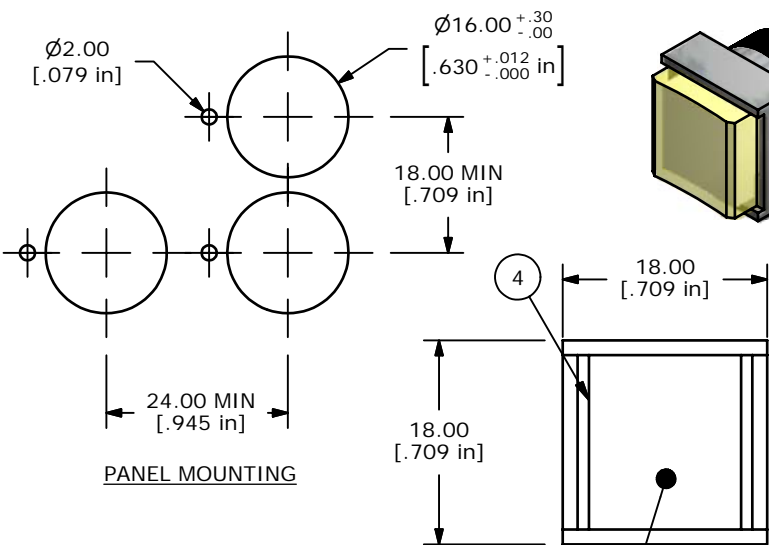
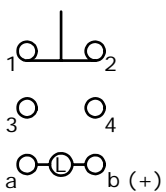


PARTS LIST				
ITEM	QTY	PART NUMBER	DESCRIPTION	
1	1	F051601	P16 PLASTIC TERMINAL PROTECTOR	
2	1	F050421	50-004-21 12V YEL LED	
3	1	F040011	P16EES11	
4	1	F050306	50-003-06 CONCAVE YEL LENS	



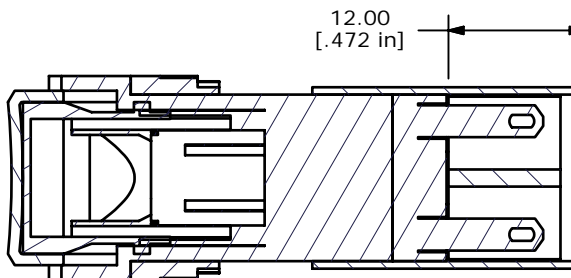
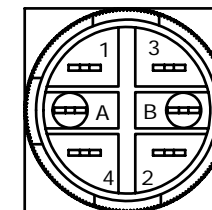
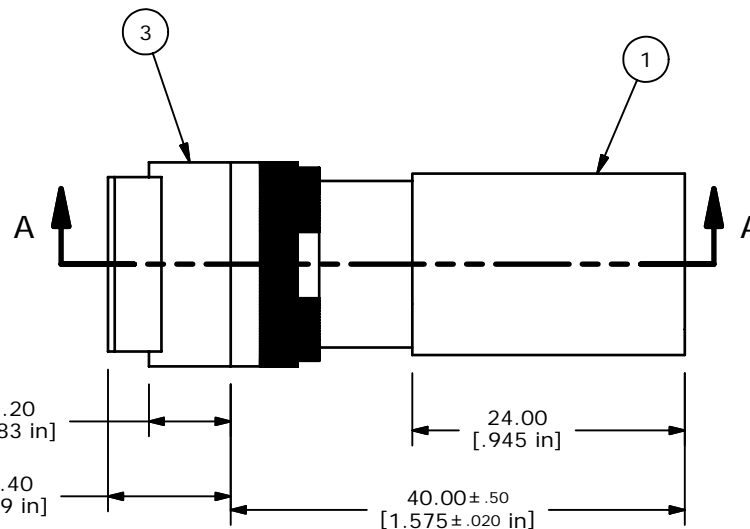
PANEL MOUNTING



SPDT CONTACT CONFIGURATION

NOTE:

1. ALL DIMENSIONS IN MM [INCH]
2. GENERAL TOLERANCE: X.X=±0.4
X.XX=±0.25
3. TERMINAL NUMBERS FOR REF ONLY
4. CONTACT RATING: 5A@ 250VAC
6A@ 24VDC
5. ELECTRICAL LIFE: 50,000 OPERATIONS
6. INSULATION RESISTANCE: 1,000 MEGA-OHM MIN.
7. OPERATING TEMP.: -25°C to 55°C
- ▲8. LAMP VOLTAGE: 12VDC LED
9. ▲ DENOTES CRITICAL PARAMETER.
10. PACKAGE: BOX/20 PCS
11. 2002/95/EC (ROHS) COMPLIANT



SECTION A-A
SCALE 1.50 : 1



A	17278	RELEASED FOR PRODUCTION	5/14/07	TN
REV	PCR NO	DESCRIPTION	DATE	BY

THE INFORMATION CONTAINED IN THIS DOCUMENT IS PROPRIETARY TO E-SWITCH AND IS NOT TO BE COPIED OR TRANSFERRED

TITLE P16EES11JYELYEL				
SCALE 2:1	DATE 5/14/2007	DR TN	DWG XF0719P	REV A