

规格书编号

SPEC NO :

产品规格书

SPECIFICATION

CUSTOMER 客户: _____
PRODUCT 产品: _____ SAW FILTER _____
MODEL NO 型号: _____ HDF429.1M SMD-21B _____
PREPARED 编制: _____ CHECKED 审核: _____
APPROVED 批准: _____ D A T E 日期: _____ 2010-11-11 _____

客户确认 CUSTOMER RECEIVED:		
审核 CHECKED	批准 APPROVED	日期 DATE

无锡市好达电子有限公司
Shoulder Electronics Limited

1. Electrical Specification

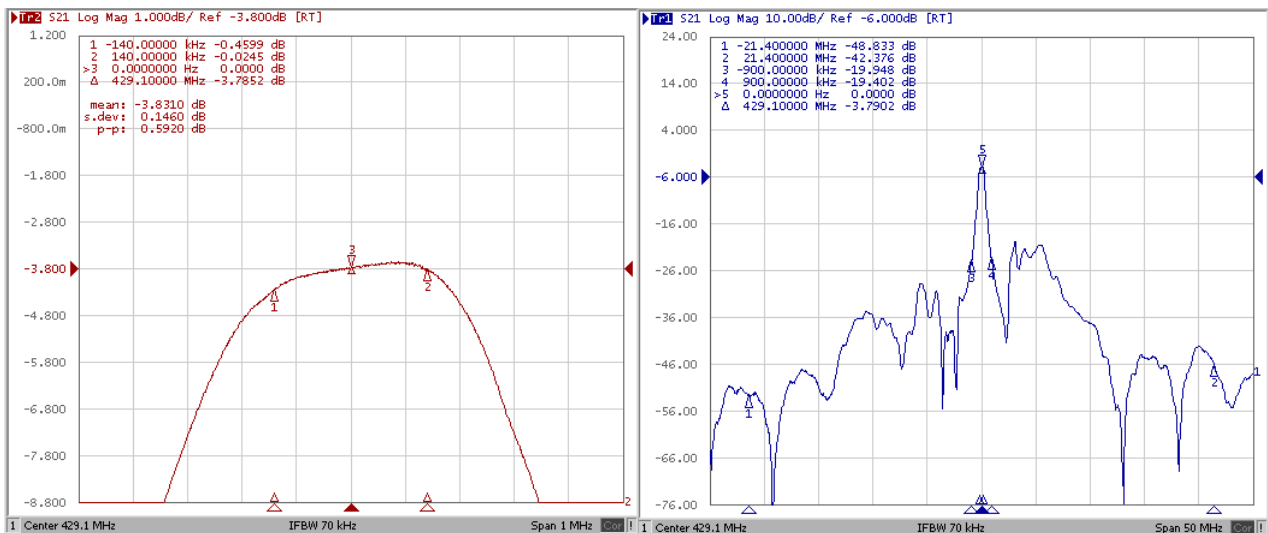
DC Voltage VDC	10V
AC Voltage Vpp	10V50Hz/60Hz
Operation temperature	-40°C to +85°C
Storage temperature	-45°C to +85°C
RF Power Dissipation	0dBm

2. Electronic Characteristics

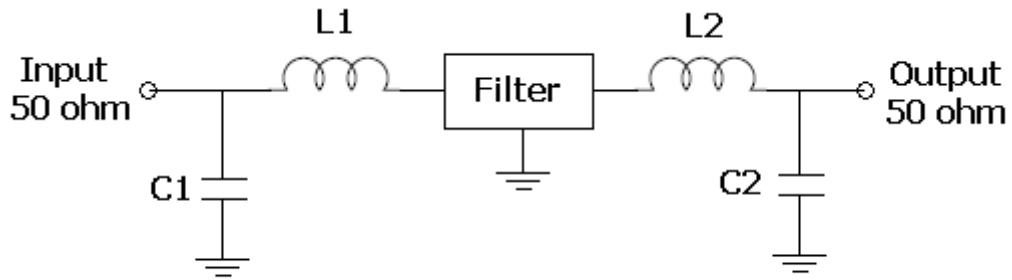
2-2. Electrical characteristics

	Unit	Minimum	Typical	Maximum
Center Frequency	MHz	-	429.1	-
Insertion Loss	dB	-	4.0	6.0
Passband (-3dB)	KHz	±140	±300	-
Ripple (with Fo ± 140KHz)	dB	-	1.0	2.0
Relative Attenuation				
Fo-50MHz ~ Fo-25MHz		35	50	
Fo-21.4MHz		35	45	
Fo-900KHz	dB	16	19	-
Fo+900KHz		16	19	
Fo+21.4MHz		35	42	
Fo+25 MHz ~ Fo+50MHz		35	45	

2-1. Typical frequency response

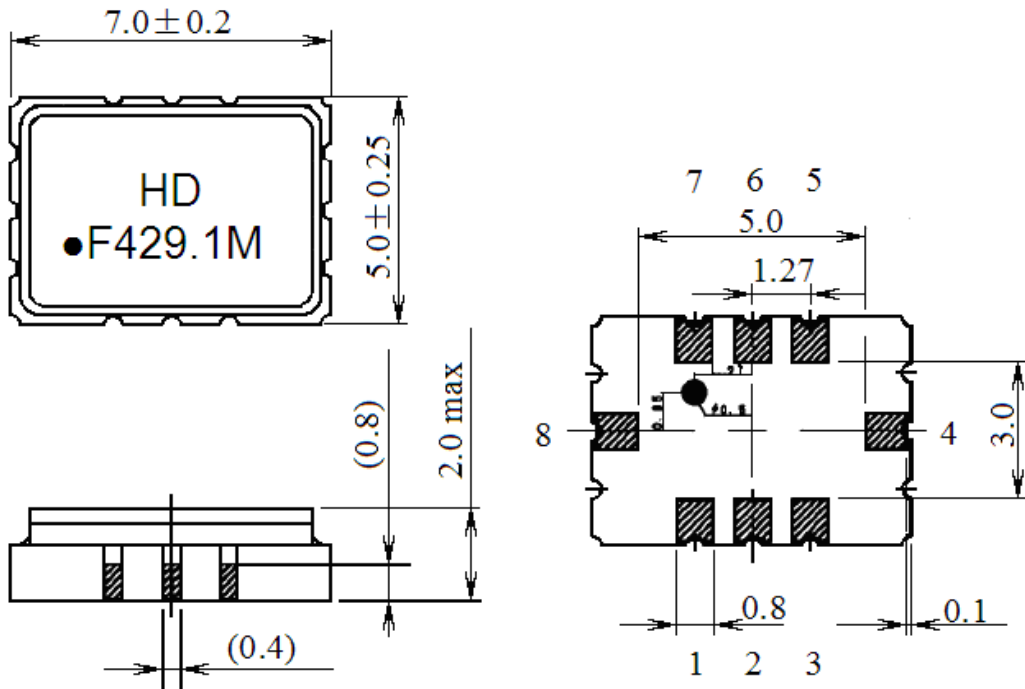


3. TEST CIRCUIT



L1=L2=33nH, C1=C2=13pF

4. DIMENSION



Pin Description	
1, 2, 3, 5, 6, 7	Ground
8	Input
4	Output

5. Packing

5.1 Dimensions

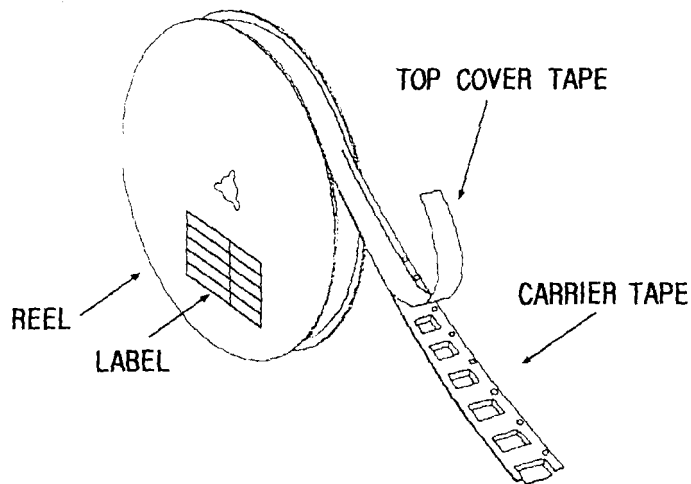
- (1) Carrier Tape: Figure 1
- (2) Reel: Figure 2
- (3) The product shall be packed properly not to be damaged during transportation and storage.

5.2 Reeling Quantity

- 1000 pcs/reel 7''
3000 pcs/reel 13''

5.3 Taping Structure

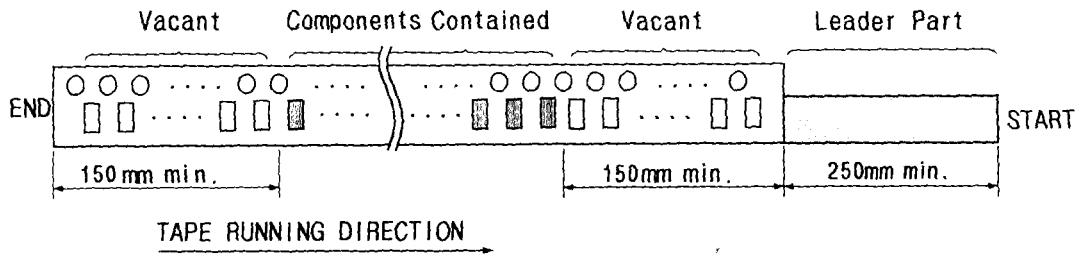
- (1) The tape shall be wound around the reel in the direction shown below.



- (2) Label

Device Name	
User Product Name	
Quantity	
Lot No.	

- (3) Leader part and vacant position specifications.

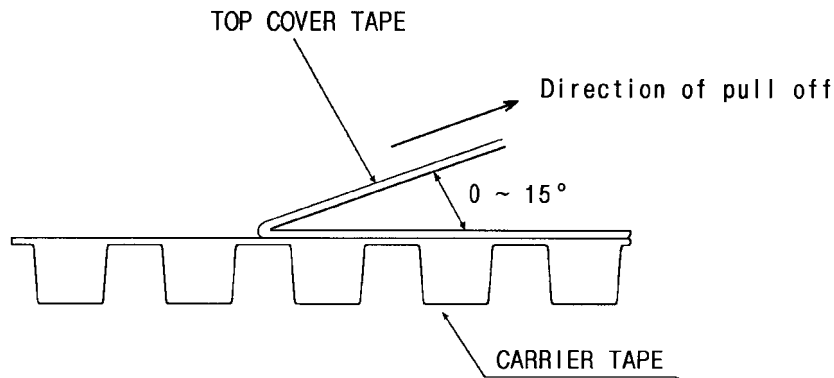


6. TAPE SPECIFICATIONS

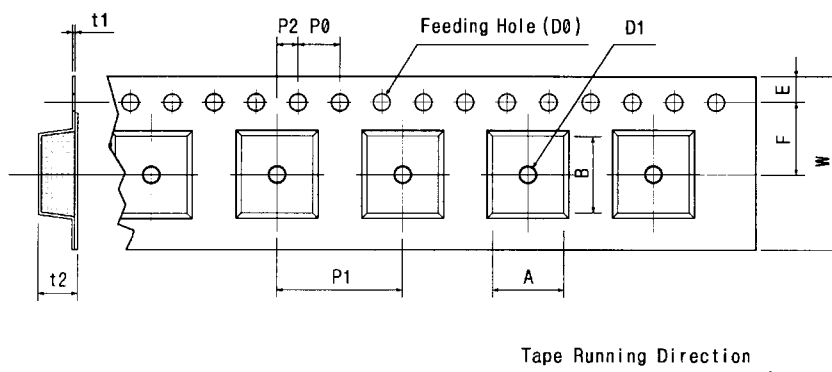
6.1 Tensile Strength of Carrier Tape: 4.4N/mm width

6.2 Top Cover Tape Adhesion (See the below figure)

- (1) pull off angle: 0~15°
- (2) speed: 300mm/min.
- (3) force: 20~70g



[Figure 1] Carrier Tape Dimensions

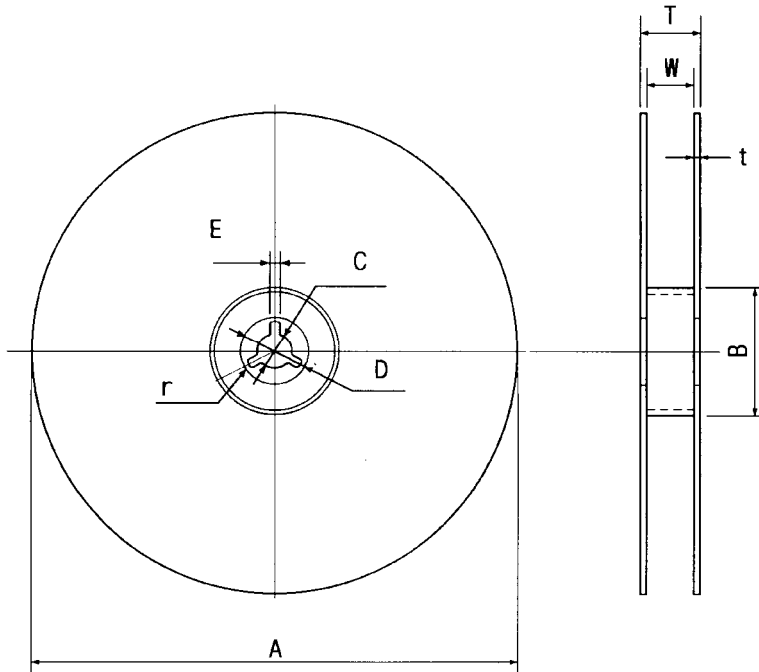


[Unit:mm]

W	F	E	P0	P1	P2	D0	D1	t1	t2	A	B
12.00	7.50	1.75	4.00	8.00	2.00	Ø1.50	Ø1.5	0.25	2.20	5.80	7.30
±0.30	±0.10	±0.10	±0.10	±0.10	±0.10		±0.25	±0.05	±0.10	±0.10	±0.10

[Figure 2]

[Unit:mm]



A	B	C	D	E	W	t	r
Ø330	Ø100	Ø13	Ø21	2	16.8	3	1.0
±1.0	±0.5	±0.5	±0.8	±0.5	±0.3	max.	max.