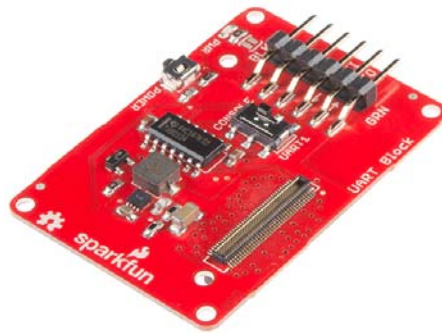




SparkFun Blocks for Intel® Edison - UART Block

Introduction

The UART Block provides a level shifted interface to the console port or second UART port. This is a great solution when USB is not an option. This allows the Edison module to be interfaced with legacy hardware by providing a protected signal interface. Using a RS232 Shifter, it is possible to connect an Edison to RS232 devices commonly found in older automation equipment and instrumentation. The UART Block paired with a 5V Compatible FTDI device, such as our FTDI Basic Breakout, will power an Edison Stack.



UART Block

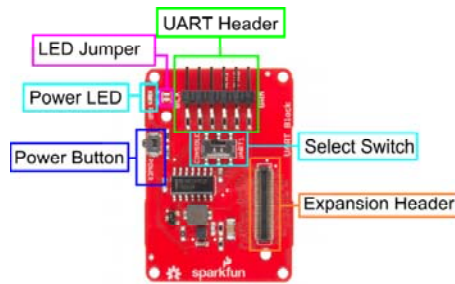
Suggested Reading

If you are unfamiliar with Blocks, take a look at the [General Guide to Sparkfun Blocks for Intel Edison](#).

Other tutorials that may help you on your Edison adventure include:

- [Serial Communication](#)
- [How to Install FTDI Drivers](#)
- [Serial Terminal Basics](#)
- [Powering Your Project](#)
- [Connector Basics](#)

Board Overview



UART Block Functional Diagram

- UART Header - Standard FTDI header with RX, TX, VCC, and GND broken out.
- Select Switch - Select between Console (UART2) and UART1
- Power Button - The power switch is connected to the "PWRBTN" line on the Edison. This give the user the ability to place an Edison in sleep or power down the module completely. This does not affect power to other Blocks in the stack.
- Power LED - The power LED illuminates when power is present on VSYS. This can come from the Console Block, or any other powered Block in the stack.
- LED Jumper - If power consumption is an issue, cut each jumper to disable LED
- Expansion Header - The 70-pin Expansion header breaks out the functionality of the Intel Edison. This header also passes signals and power throughout the stack. These function much like an Arduino Shield.

Using the UART Block

To use the UART Block, attach an Intel Edison to the back of the board or add it to your current stack. Blocks can be stacked without hardware, but it leaves the expansion connectors unprotected from mechanical stress.



UART Block Installed

We have a nice Hardware Pack available that gives enough hardware to secure three blocks and an Edison.

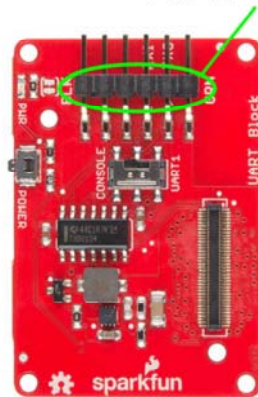


Intel Edison Hardware Pack

Using the Block in the Middle of a Stack

If you need to use the UART block in the middle of a stack, it may be necessary to file or sand the FTDI connector. The connector is slightly larger than the 3mm clearance allowed by the expansion connectors. It is preferred that the user place this Block at the bottom of a stack.

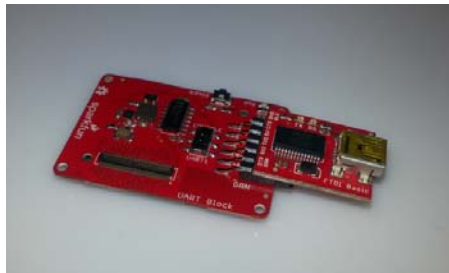
File or Sand Here



File or Sand the Connector Here

Using the Block with our FTDI Accessories.

The UART Block can be used with our 5V FTDI Basic.



FTDI 5V Basic Installed

Connecting to the Console

Once you have connected your hardware to your UART -> Serial device of choice, plug the USB side of the device into the USB port on your computer. If you do not have FTDI drivers currently installed, you'll need to

download and install them before using your Edison. Visit our tutorial for instructions on how to install the drivers. After you have ensured that the drivers are installed and your device is running, open your favorite terminal program and point it to the USB-serial connection. We have another tutorial to explain terminal programs and how to use them.

The standard Baud Rate is 115200bps.

Once a terminal is active you are ready to explore!

```

COMBO - PuTTY
[OK] | Started SSH runtime ps service.
Mounting /factory.
[OK] | Started USB Ethernet gadget.
[OK] | Started Network Service.
9.781925] system-fsck[208]: /dev/mmcblk0p5: clean, 13/128 files, 40/1024 b
locks
[OK] | Mounted /factory.
[OK] | Reached target Network.
Starting Networkd - lightweight server implementation...SS protocols...
Starting NetworkManager - lightweight server implementation...E-DH protocols.
Starting zero-configuration networking...
[OK] | Started Zero-configuration networking.
Starting Intel_XDP_Daemon...
[OK] | Started Intel_XDP_Daemon.
Starting Network Name Resolution...
[OK] | Started Network Name Resolution.
Stopping Daemon to receive the wpa_supplicant event...
[OK] | Stopped Daemon to receive the wpa_supplicant event.
Starting Daemon to receive the wpa_supplicant event...
[OK] | Started Daemon to receive the wpa_supplicant event.

Poky (Yocto Project Reference Distro) 1.6 edison try#122
edison login:

```

Using the Power Button

The power button on the Edison brings a unique feature commonly not found on single board computers. The power button behaves much like the power buttons on desktop and laptop computers.

- While powered, Holding the power button for ~10 seconds will power down the Edison.
- While un-powered, pressing the power button momentarily will reboot the Edison.
- While powered, pressing the power button momentarily will place the Edison in sleep mode.
- While in sleep mode, pressing the power button momentarily will wake the Edison.

Resources and Going Further

Now that you have had a brief overview of the UART Block, take a look at some of these other tutorials. These tutorials cover programming, Block stacking, and interfacing with the Intel Edison ecosystems.

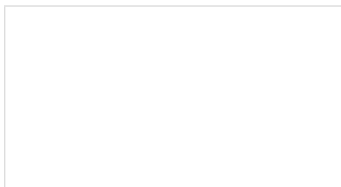
Edison General Topics:

- General Guide to Sparkfun Blocks for Intel Edison
- Edison Getting Started Guide
- Loading Debian (Ubinix) on the Edison

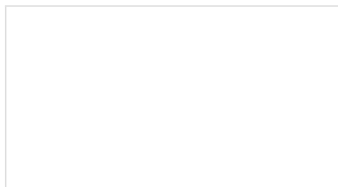
Block Specific Topics:

- How to Install FTDI Drivers
- UART Block Git Repo

Check out these other Edison related tutorials from SparkFun:



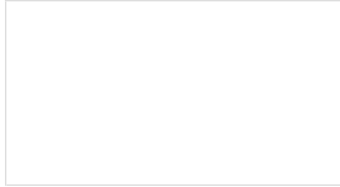
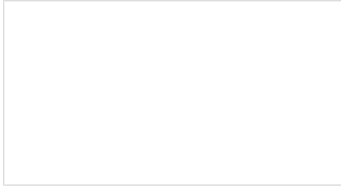
SparkFun Blocks for Intel® Edison - OLED Block



Edison Getting Started Guide

A quick overview of the features of the OLED Block for the Edison.

An introduction to the Intel® Edison. Then a quick walk through on interacting with the console, connecting to WiFi, and doing...stuff.



Programming the Intel® Edison: Beyond the Arduino IDE

Intel's Edison module goes beyond being just another Arduino clone. Check this tutorial for advice on how to get the most out of your Edison by writing code in C++!

Loading Debian (Ubilinux) on the Edison

How to load a Debian distribution (specifically Ubilinux) onto the Edison.