



Features

- Frequency Range: 20~600MHz
- Low Noise: 1.7dB(Typ)
- Active Bias Design Supply Temperature Compensation
- Standard Hermetic Package
- Operating Temperature Range: -55°C~+85°C

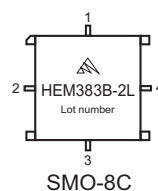
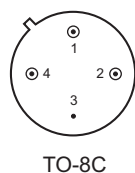
Electrical (50 Ω, V_{CC}=+15V, T_A=-55°C~+85°C)

Parameter	Symbol	Unit	Guaranteed	Typical
Frequency Range	f _L ~f _H	MHz	20~600	20~600
Gain	Gp	dB	≥10	11
Gain Flatness	ΔGp	dB	≤1	0.5
Noise Figure	Fn	dB	≤2.0 Δ	1.7
Input VSWR	VSWRi	--	≤2.0:1 Δ	1.8:1
Output VSWR	VSWRo	--	≤2.0:1 Δ	1.3:1
For 1dB Compression	P ₋₁	dBm	≥24.0*Δ	24.5
Supply Current	I _{CC}	mA	≤130	100

Note: "*" f=300 MHz. "Δ" T_A=24±1°C.

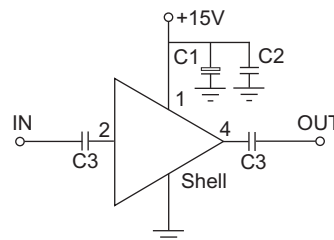
Maximum Ratings

Power supply: +16V_{DC}
 RF input: +18dBm
 Storage Temp: +125°C



Application Notes

1. Typical application shown as right, C₁=3.3~22 μF, C₂=3300~6800pF, C₃=1000~10000pF.
2. ESD observe handling precautions.
3. Connectorized package (SMA-1) available.
4. See assembly section for outline and mounting information.



Typical Curves

