

# ASM3P2811A/B, ASM3P2812A/B, ASM3P2814A/B



ON Semiconductor®

<http://onsemi.com>

## Low Power EMI Reduction IC

### Description

The ASM3P28XX devices are versatile spread spectrum frequency modulators designed specifically for a wide range of input clock frequencies from 10 MHz to 40 MHz. Refer to *Input/Output Frequency Range Selection Table*. The ASM3P28XX can generate an EMI reduced clock from crystal, ceramic resonator, or system clock. The ASM3P28XX-A and the ASM3P28XX-B offer various combinations of spread options and percentage deviations. Refer to *Frequency Deviation and Spread Selection Table*. These combinations include Down and Center Spread, and percentage deviation range from  $\pm 0.625\%$  to  $-3.5\%$ .

The ASM3P28XX reduces electromagnetic interference (EMI) at the clock source, allowing system wide reduction of EMI of down stream clock and data dependent signals. The ASM3P28XX allows significant system cost savings by reducing the number of circuit board layers, ferrite beads, shielding, and other passive components that are traditionally required to pass EMI regulations.

The ASM3P28XX modulates the output of a single PLL in order to “spread” the bandwidth of a synthesized clock, and more importantly, decreases the peak amplitudes of its harmonics. This results in significantly lower system EMI compared to the typical narrow band signal produced by oscillators and most frequency generators. Lowering EMI by increasing a signal’s bandwidth is called ‘spread spectrum clock generation.’

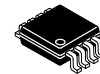
The ASM3P28XX uses the most efficient and optimized modulation profile approved by the FCC and is implemented in a proprietary all-digital method.

### Applications

The ASM3P28XX is targeted towards EMI management for memory and LVDS interfaces in mobile graphic chipsets and high-speed digital applications such as PC peripheral devices, consumer electronics, and embedded controller systems.

### Features

- FCC Approved Method of EMI Attenuation
- Provides up to 15 dB EMI Reduction
- Generates a 1x, 2x and 4x Low EMI Spread Spectrum Clock of the Input Frequency
  - ◆ 1x: ASM3P2811A/B
  - ◆ 2x: ASM3P2812A/B
  - ◆ 4x: ASM3P2814A/B
- Optimized for Input Frequency Range from 10 MHz to 40 MHz
- Internal Loop Filter Minimizes External Components and Board Space
- Selectable Spread Options:
  - ◆ Down Spread and Center Spread
- 8 Frequency Deviation Selections:
  - ◆  $\pm 0.625\%$  to  $-3.5\%$
- Low Inherent Cycle-to-Cycle Jitter
- 3.3 V Operating Voltage
- CMOS/TTL Compatible Inputs and Outputs
- Pin-out Compatible with Cypress CY25811, CY25812 and CY25814
- Commercial and Industrial Temperature Range
- Available in 8-pin SOIC and TSSOP Packages
- These Devices are Pb-Free, Halogen Free/BFR Free and are RoHS Compliant

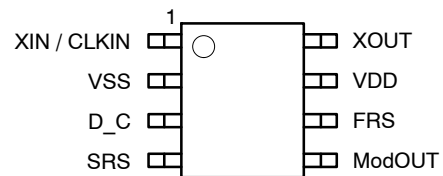


SOIC-8  
S SUFFIX  
CASE 751BD



TSSOP-8  
T SUFFIX  
CASE 948AL

### PIN CONFIGURATION



(Top View)

### ORDERING INFORMATION

See detailed ordering and shipping information in the package dimensions section on page 7 of this data sheet.

# ASM3P2811A/B, ASM3P2812A/B, ASM3P2814A/B

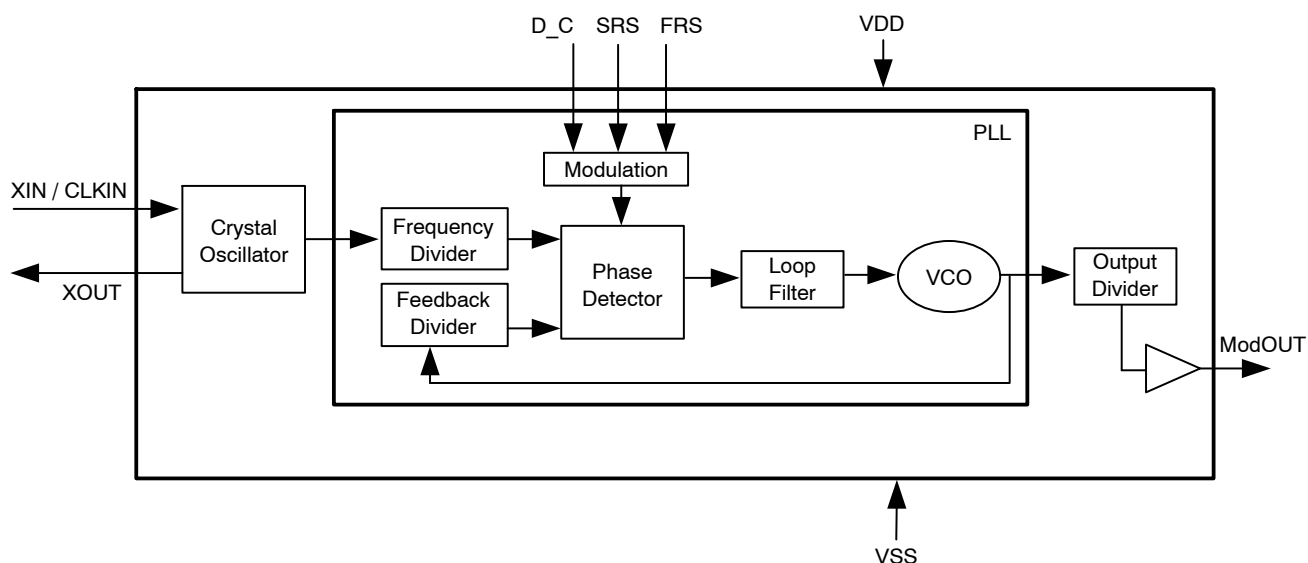


Figure 1. Block Diagram

Table 1. PIN DESCRIPTION

Pin#	Pin Name	Type	Description
1	XIN / CLKIN	I	Crystal connection or external Clock input.
2	VSS	P	Ground to entire chip.
3	D_C	I	Digital logic input used to select Down (LOW) or Center (HIGH) spread options. (Refer to <i>Frequency Deviation and Spread Selection Table</i> ). This pin has an internal pull-up resistor.
4	SRS	I	Spread range select. Digital logic input used to select frequency deviation (Refer to <i>Frequency Deviation and Spread Selection Table</i> ). This pin has an internal pull-up resistor.
5	ModOUT	O	Spread spectrum clock output
6	FRS	I	Frequency range select. Digital logic input used to select Input frequency range (Refer to <i>Input/Output Frequency Range Selection Table</i> ). This pin has an internal pull-up resistor.
7	VDD	P	Power supply for the entire chip.
8	XOUT	O	Crystal connection. If using an external reference, this pin must be left unconnected.

Table 2. INPUT/OUTPUT FREQUENCY RANGE SELECTION

FRS (pin 6)	Part Number						Modulation Rate
	ASM3P2811 (1x)		ASM3P2812 (2x)		ASM3P2814 (4x)		
	Input (MHz)	Output (MHz)	Input (MHz)	Output (MHz)	Input (MHz)	Output (MHz)	
0	10–20	10–20	10–20	20–40	10–20	40–80	Input Frequency / 448
1	20–40	20–40	20–40	40–80	20–40	80–160	Input Frequency / 896

## ASM3P2811A/B, ASM3P2812A/B, ASM3P2814A/B

**Table 3. OUTPUT FREQUENCY DEVIATION AND SPREAD SELECTION**

Part Number	D_C (pin 3)	SRS (pin 4)	Frequency Deviation (%) (Note 1)			
			FS = 0		FS = 1	
			10/20/40 (MHz)	20/40/80 (MHz)	20/40/80 (MHz)	40/80/160 (MHz)
ASM3P28XXA	0	0	-3	-2.5	-2.7	-2.6
	0	1	-3.7	-3.4	-3.8	-3.6
	1	0	±1.5	±1.2	±1.5	±1.3
	1	1	±1.8	±1.6	±1.9	±1.8
ASM3P28XXB	0	0	-1.7	-1.0	-1.5	-1.4
	0	1	-2.0	-1.5	-2.0	-1.9
	1	0	±0.75	±0.6	±0.8	±0.7
	1	1	±1.0	±0.75	±1.0	±0.9

1. Frequency Deviation given in the table is for the Output Frequency Range covering ASM3P2811x / 12x / 14x.

**Table 4. ABSOLUTE MAXIMUM RATINGS**

Symbol	Parameter	Rating	Unit
V <sub>DD</sub> , V <sub>IN</sub>	Voltage on any pin with respect to Ground	-0.5 to +4.6	V
T <sub>STG</sub>	Storage temperature	-65 to +125	°C
T <sub>s</sub>	Max. Soldering Temperature (10 sec)	260	°C
T <sub>J</sub>	Junction Temperature	150	°C
T <sub>DV</sub>	Static Discharge Voltage (As per JEDEC STD 22- A114-B)	2	KV

Stresses exceeding Maximum Ratings may damage the device. Maximum Ratings are stress ratings only. Functional operation above the Recommended Operating Conditions is not implied. Extended exposure to stresses above the Recommended Operating Conditions may affect device reliability.

**Table 5. OPERATING CONDITIONS**

Symbol	Parameter	Min	Max	Unit
V <sub>DD</sub>	Voltage on any pin with respect to GND	3.0	3.6	V
T <sub>A</sub>	Operating temperature	-40	+85	°C
C <sub>L</sub>	Load Capacitance		10	pF
C <sub>IN</sub>	Input Capacitance		7	pF

## ASM3P2811A/B, ASM3P2812A/B, ASM3P2814A/B

**Table 6. DC ELECTRICAL CHARACTERISTICS**

Symbol	Parameter	Min	Typ	Max	Unit
V <sub>IL</sub>	Input low voltage	VSS-0.3		0.8	V
V <sub>IH</sub>	Input high voltage	2		V <sub>DD</sub> +0.3	V
I <sub>IL</sub>	Input low current (Inputs D_C, SRS and FRS are pulled high internally)			-50	μA
I <sub>IH</sub>	Input high current			50	μA
I <sub>XOL</sub>	XOUT Output low current (V <sub>XOL</sub> @ 0.4 V, V <sub>DD</sub> = 3.3 V)			3	mA
I <sub>XOH</sub>	XOUT Output high current (V <sub>XOH</sub> @ 2.5 V, V <sub>DD</sub> = 3.3 V)			3	mA
V <sub>OL</sub>	Output low voltage (V <sub>DD</sub> = 3.3 V, I <sub>OL</sub> = 5 mA)			0.4	V
V <sub>OH</sub>	Output high voltage (V <sub>DD</sub> = 3.3 V, I <sub>OH</sub> = -5 mA)	2.5			V
I <sub>CC</sub>	Dynamic supply current (Unloaded Output)	8		18	mA
I <sub>DD</sub>	Static supply current, Standby mode (CLKIN pulled to GND)			4.5	mA
V <sub>DD</sub>	Operating voltage	3.0	3.3	3.6	V
t <sub>ON</sub>	Power up time (first locked clock cycle after power up)			500	μS
Z <sub>OUT</sub>	Clock out impedance		76		Ω

**Table 7. AC ELECTRICAL CHARACTERISTICS**

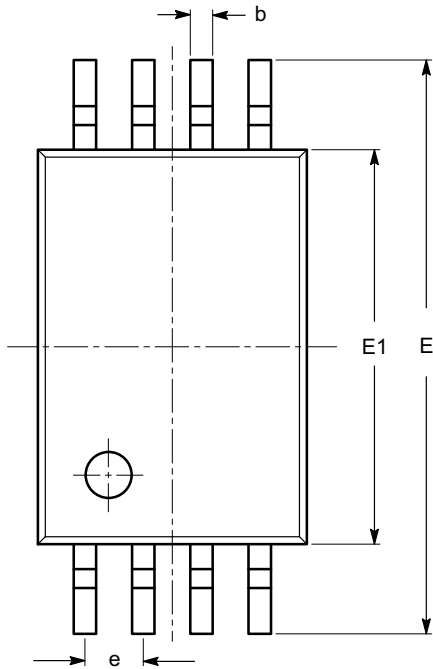
Symbol	Parameter	Min	Typ	Max	Unit
f <sub>IN</sub>	Input frequency for ASM3P2811/12/13/14 A/B	10		40	MHz
f <sub>OUT</sub>	Output frequency for ASM3P2811A/B	10		40	MHz
	Output frequency for ASM3P2812A/B	20		80	MHz
	Output frequency for ASM3P2814A/B	40		160	MHz
t <sub>LH</sub> (Note 2)	Output rise time (measured at 0.8 V to 2.0 V)	0.5	0.9	1.2	nS
t <sub>HL</sub> (Note 2)	Output fall time (measured at 2.0 V to 0.8 V)	0.8	1.0	1.3	nS
t <sub>JC</sub>	Cycle-to-Cycle Jitter (Unloaded Output)		±250		pS
t <sub>D</sub>	Output duty cycle	45	50	55	%

2. t<sub>LH</sub> and t<sub>HL</sub> are measured into a capacitive load of 10 pF.

# ASM3P2811A/B, ASM3P2812A/B, ASM3P2814A/B

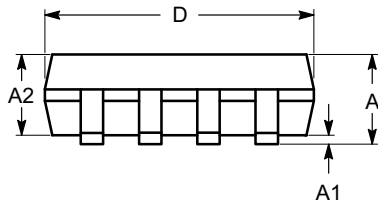
## PACKAGE DIMENSIONS

TSSOP8, 4.4x3  
CASE 948AL-01  
ISSUE O

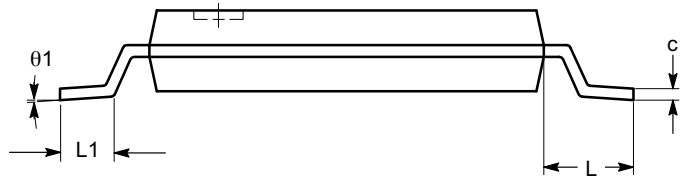


SYMBOL	MIN	NOM	MAX
A			1.20
A1	0.05		0.15
A2	0.80	0.90	1.05
b	0.19		0.30
c	0.09		0.20
D	2.90	3.00	3.10
E	6.30	6.40	6.50
E1	4.30	4.40	4.50
e	0.65 BSC		
L	1.00 REF		
L1	0.50	0.60	0.75
$\theta$	0°		8°

TOP VIEW



SIDE VIEW



END VIEW

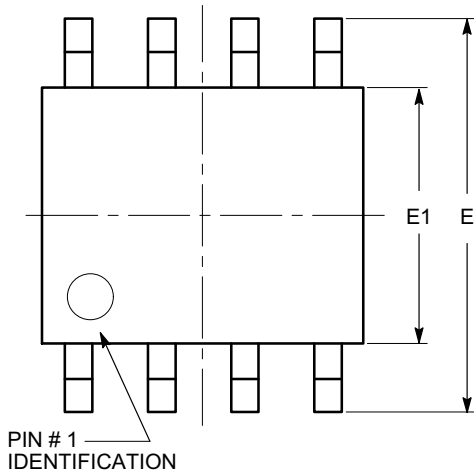
**Notes:**

- (1) All dimensions are in millimeters. Angles in degrees.
- (2) Complies with JEDEC MO-153.

# ASM3P2811A/B, ASM3P2812A/B, ASM3P2814A/B

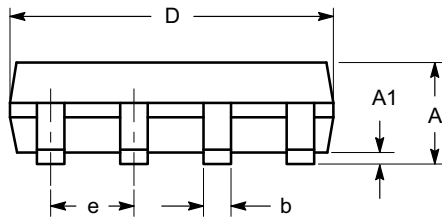
## PACKAGE DIMENSIONS

SOIC 8, 150 mils  
CASE 751BD-01  
ISSUE O

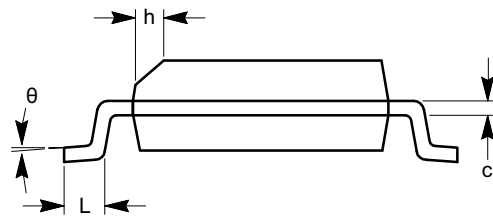


TOP VIEW

SYMBOL	MIN	NOM	MAX
A	1.35		1.75
A1	0.10		0.25
b	0.33		0.51
c	0.19		0.25
D	4.80		5.00
E	5.80		6.20
E1	3.80		4.00
e	1.27 BSC		
h	0.25		0.50
L	0.40		1.27
$\theta$	0°		8°



SIDE VIEW



END VIEW

**Notes:**

- (1) All dimensions are in millimeters. Angles in degrees.
- (2) Complies with JEDEC MS-012.

## ASM3P2811A/B, ASM3P2812A/B, ASM3P2814A/B

**Table 8. ORDERING INFORMATION**

Part Number	Marking	Package Type	Temperature
ASM3P2811AF-08SR	3P2811AFS	SOIC – Tape & Reel, Pb free	Commercial
ASM3P2811AF-08ST	3P2811AFS	SOIC – Tube, Pb free	Commercial
ASM3P2811AF-08TR	3P2811AFT	TSSOP – Tape & Reel, Pb free	Commercial
ASM3P2811AF-08TT	3P2811AFT	TSSOP – Tube, Pb free	Commercial
ASM3P2811BF-08SR	3P2811BFS	SOIC – Tape & Reel, Pb free	Commercial
ASM3P2811BF-08ST	3P2811BFS	SOIC – Tube, Pb free	Commercial
ASM3P2811BF-08TR	3P2811BFT	TSSOP – Tape & Reel, Pb free	Commercial
ASM3P2811BF-08TT	3P2811BFT	TSSOP – Tube, Pb free	Commercial
ASM3P2812AF-08SR	3P2812AFS	SOIC – Tape & Reel, Pb free	Commercial
ASM3P2812AF-08ST	3P2812AFS	SOIC – Tube, Pb free	Commercial
ASM3P2812AF-08TR	3P2812AFT	TSSOP – Tape & Reel, Pb free	Commercial
ASM3P2812AF-08TT	3P2812AFT	TSSOP – Tube, Pb free	Commercial
ASM3P2812BF-08SR	3P2812BFS	SOIC – Tape & Reel, Pb free	Commercial
ASM3P2812BF-08ST	3P2812BFS	SOIC – Tube, Pb free	Commercial
ASM3P2812BF-08TR	3P2812BFT	TSSOP – Tape & Reel, Pb free	Commercial
ASM3P2812BF-08TT	3P2812BFT	TSSOP – Tube, Pb free	Commercial
ASM3P2814AF-08SR	3P2814AFS	SOIC – Tape & Reel, Pb free	Commercial
ASM3P2814AF-08ST	3P2814AFS	SOIC – Tube, Pb free	Commercial
ASM3P2814AF-08TR	3P2814AFT	TSSOP – Tape & Reel, Pb free	Commercial
ASM3P2814AF-08TT	3P2814AFT	TSSOP – Tube, Pb free	Commercial
ASM3P2814BF-08SR	3P2814BFS	SOIC – Tape & Reel, Pb free	Commercial
ASM3P2814BF-08ST	3P2814BFS	SOIC – Tube, Pb free	Commercial
ASM3P2814BF-08TR	3P2814BFT	TSSOP – Tape & Reel, Pb free	Commercial
ASM3P2814BF-08TT	3P2814BFT	TSSOP – Tube, Pb free	Commercial
ASM3I2811AF-08SR	3I2811AFS	SOIC – Tape & Reel, Pb free	Industrial
ASM3I2811AF-08ST	3I2811AFS	SOIC – Tube, Pb free	Industrial
ASM3I2811AF-08TR	3I2811AFT	TSSOP – Tape & Reel, Pb free	Industrial
ASM3I2811AF-08TT	3I2811AFT	TSSOP – Tube, Pb free	Industrial
ASM3I2811BF-08SR	3I2811BFS	SOIC – Tape & Reel, Pb free	Industrial
ASM3I2811BF-08ST	3I2811BFS	SOIC – Tube, Pb free	Industrial
ASM3I2811BF-08TR	3I2811BFT	TSSOP – Tape & Reel, Pb free	Industrial
ASM3I2811BF-08TT	3I2811BFT	TSSOP – Tube, Pb free	Industrial
ASM3I2812AF-08SR	3I2812AFS	SOIC – Tape & Reel, Pb free	Industrial
ASM3I2812AF-08ST	3I2812AFS	SOIC – Tube, Pb free	Industrial
ASM3I2812AF-08TR	3I2812AFT	TSSOP – Tape & Reel, Pb free	Industrial
ASM3I2812AF-08TT	3I2812AFT	TSSOP – Tube, Pb free	Industrial
ASM3I2812BF-08SR	3I2812BFS	SOIC – Tape & Reel, Pb free	Industrial
ASM3I2812BF-08ST	3I2812BFS	SOIC – Tube, Pb free	Industrial
ASM3I2812BF-08TR	3I2812BFT	TSSOP – Tape & Reel, Pb free	Industrial
ASM3I2812BF-08TT	3I2812BFT	TSSOP – Tube, Pb free	Industrial
ASM3I2814AF-08SR	3I2814AFS	SOIC – Tape & Reel, Pb free	Industrial
ASM3I2814AF-08ST	3I2814AFS	SOIC – Tube, Pb free	Industrial

## ASM3P2811A/B, ASM3P2812A/B, ASM3P2814A/B

**Table 8. ORDERING INFORMATION** (continued)


Part Number	Marking	Package Type	Temperature
ASM3I2814AF-08TR	3I2814AFT	TSSOP – Tape & Reel, Pb free	Industrial
ASM3I2814AF-08TT	3I2814AFT	TSSOP – Tube, Pb free	Industrial
ASM3I2814BF-08SR	3I2814BFS	SOIC – Tape & Reel, Pb free	Industrial
ASM3I2814BF-08ST	3I2814BFS	SOIC – Tube, Pb free	Industrial
ASM3I2814BF-08TR	3I2814BFT	TSSOP – Tape & Reel, Pb free	Industrial
ASM3I2814BF-08TT	3I2814BFT	TSSOP – Tube, Pb free	Industrial
ASM3P2811AG-08SR	3P2811AGS	SOIC – Tape & Reel, Green	Commercial
ASM3P2811AG-08ST	3P2811AGS	SOIC – Tube, Green	Commercial
ASM3P2811AG-08TR	3P2811AGT	TSSOP – Tape & Reel, Green	Commercial
ASM3P2811AG-08TT	3P2811AGT	TSSOP – Tube, Green	Commercial
ASM3P2811BG-08SR	3P2811BGS	SOIC – Tape & Reel, Green	Commercial
ASM3P2811BG-08ST	3P2811BGS	SOIC – Tube, Green	Commercial
ASM3P2811BG-08TR	3P2811BGT	TSSOP – Tape & Reel, Green	Commercial
ASM3P2811BG-08TT	3P2811BGT	TSSOP – Tube, Green	Commercial
ASM3P2812AG-08SR	3P2812AGS	SOIC – Tape & Reel, Green	Commercial
ASM3P2812AG-08ST	3P2812AGS	SOIC – Tube, Green	Commercial
ASM3P2812AG-08TR	3P2812AGT	TSSOP – Tape & Reel, Green	Commercial
ASM3P2812AG-08TT	3P2812AGT	TSSOP – Tube, Green	Commercial
ASM3P2812BG-08SR	3P2812BGS	SOIC – Tape & Reel, Green	Commercial
ASM3P2812BG-08ST	3P2812BGS	SOIC – Tube, Green	Commercial
ASM3P2812BG-08TR	3P2812BGT	TSSOP – Tape & Reel, Green	Commercial
ASM3P2812BG-08TT	3P2812BGT	TSSOP – Tube, Green	Commercial
ASM3P2814AG-08SR	3P2814AGS	SOIC – Tape & Reel, Green	Commercial
ASM3P2814AG-08ST	3P2814AGS	SOIC – Tube, Green	Commercial
ASM3P2814AG-08TR	3P2814AGT	TSSOP – Tape & Reel, Green	Commercial
ASM3P2814AG-08TT	3P2814AGT	TSSOP – Tube, Green	Commercial
ASM3P2814BG-08SR	3P2814BGS	SOIC – Tape & Reel, Green	Commercial
ASM3P2814BG-08ST	3P2814BGS	SOIC – Tube, Green	Commercial
ASM3P2814BG-08TR	3P2814BGT	TSSOP – Tape & Reel, Green	Commercial
ASM3P2814BG-08TT	3P2814BGT	TSSOP – Tube, Green	Commercial
ASM3I2811AG-08SR	3I2811AGS	SOIC – Tape & Reel, Green	Industrial
ASM3I2811AG-08ST	3I2811AGS	SOIC – Tube, Green	Industrial
ASM3I2811AG-08TR	3I2811AGT	TSSOP – Tape & Reel, Green	Industrial
ASM3I2811AG-08TT	3I2811AGT	TSSOP – Tube, Green	Industrial
ASM3I2811BG-08SR	3I2811BGS	SOIC – Tape & Reel, Green	Industrial
ASM3I2811BG-08ST	3I2811BGS	SOIC – Tube, Green	Industrial
ASM3I2811BG-08TR	3I2811BGT	TSSOP – Tape & Reel, Green	Industrial
ASM3I2811BG-08TT	3I2811BGT	TSSOP – Tube, Green	Industrial
ASM3I2812AG-08SR	3I2812AGS	SOIC – Tape & Reel, Green	Industrial
ASM3I2812AG-08ST	3I2812AGS	SOIC – Tube, Green	Industrial
ASM3I2812AG-08TR	3I2812AGT	TSSOP – Tape & Reel, Green	Industrial
ASM3I2812AG-08TT	3I2812AGT	TSSOP – Tube, Green	Industrial



# ASM3P2811A/B, ASM3P2812A/B, ASM3P2814A/B

**Table 8. ORDERING INFORMATION** (continued)

Part Number	Marking	Package Type	Temperature
ASM3I2812BG-08SR	3I2812BGS	SOIC – Tape & Reel, Green	Industrial
ASM3I2812BG-08ST	3I2812BGS	SOIC – Tube, Green	Industrial
ASM3I2812BG-08TR	3I2812BGT	TSSOP – Tape & Reel, Green	Industrial
ASM3I2812BG-08TT	3I2812BGT	TSSOP – Tube, Green	Industrial
ASM3I2814AG-08SR	3I2814AGS	SOIC – Tape & Reel, Green	Industrial
ASM3I2814AG-08ST	3I2814AGS	SOIC – Tube, Green	Industrial
ASM3I2814AG-08TR	3I2814AGT	TSSOP – Tape & Reel, Green	Industrial
ASM3I2814AG-08TT	3I2814AGT	TSSOP – Tube, Green	Industrial
ASM3I2814BG-08SR	3I2814BGS	SOIC – Tape & Reel, Green	Industrial
ASM3I2814BG-08ST	3I2814BGS	SOIC – Tube, Green	Industrial
ASM3I2814BG-08TR	3I2814BGT	TSSOP – Tape & Reel, Green	Industrial
ASM3I2814BG-08TT	3I2814BGT	TSSOP – Tube, Green	Industrial

**ON Semiconductor** and  are registered trademarks of Semiconductor Components Industries, LLC (SCILLC). SCILLC reserves the right to make changes without further notice to any products herein. SCILLC makes no warranty, representation or guarantee regarding the suitability of its products for any particular purpose, nor does SCILLC assume any liability arising out of the application or use of any product or circuit, and specifically disclaims any and all liability, including without limitation special, consequential or incidental damages. "Typical" parameters which may be provided in SCILLC data sheets and/or specifications can and do vary in different applications and actual performance may vary over time. All operating parameters, including "Typicals" must be validated for each customer application by customer's technical experts. SCILLC does not convey any license under its patent rights nor the rights of others. SCILLC products are not designed, intended, or authorized for use as components in systems intended for surgical implant into the body, or other applications intended to support or sustain life, or for any other application in which the failure of the SCILLC product could create a situation where personal injury or death may occur. Should Buyer purchase or use SCILLC products for any such unintended or unauthorized application, Buyer shall indemnify and hold SCILLC and its officers, employees, subsidiaries, affiliates, and distributors harmless against all claims, costs, damages, and expenses, and reasonable attorney fees arising out of, directly or indirectly, any claim of personal injury or death associated with such unintended or unauthorized use, even if such claim alleges that SCILLC was negligent regarding the design or manufacture of the part. SCILLC is an Equal Opportunity/Affirmative Action Employer. This literature is subject to all applicable copyright laws and is not for resale in any manner.

## PUBLICATION ORDERING INFORMATION

### LITERATURE FULFILLMENT:

Literature Distribution Center for ON Semiconductor  
P.O. Box 5163, Denver, Colorado 80217 USA  
**Phone:** 303-675-2175 or 800-344-3860 Toll Free USA/Canada  
**Fax:** 303-675-2176 or 800-344-3867 Toll Free USA/Canada  
**Email:** [orderlit@onsemi.com](mailto:orderlit@onsemi.com)

**N. American Technical Support:** 800-282-9855 Toll Free  
USA/Canada  
**Europe, Middle East and Africa Technical Support:**  
Phone: 421 33 790 2910  
**Japan Customer Focus Center**  
Phone: 81-3-5773-3850

**ON Semiconductor Website:** [www.onsemi.com](http://www.onsemi.com)

**Order Literature:** <http://www.onsemi.com/orderlit>

For additional information, please contact your local Sales Representative