

PCB LAYOUT - COMPONENT VIEW, TOL. ± 0.05  
PCB THICKNESS = 1.20 MM

TECHNICAL CHARACTERISTICS

**MATERIAL**  
 INSULATOR: LCP  
 FLAMMABILITY RATING: UL94-V0  
 COLOR: BLACK  
 CONTACT MATERIAL: COPPER ALLOY  
 CONTACT TYPE: STAMPED  
 CONTACT PLATING: GOLD  
 SHIELDING: STAINLESS STEEL; MATT TIN PLATED  
 QUALITY CLASS: 10 000 MATING CYCLES



**ENVIRONMENTAL**  
 OPERATING TEMPERATURE: -40 UP TO 85°C  
 COMPLIANCE: LEAD FREE AND ROHS

**ELECTRICAL**  
 CURRENT RATING: PIN 1 & 5: 1.8 A  
 OTHER PINS: 1.0 A  
 WORKING VOLTAGE: 30 VAC  
 INSULATOR RESISTANCE: >1000 MΩ  
 DIELECTRIC WITHSTANDING VOLTAGE: 100 VAC/MN  
 CONTACT RESISTANCE: 30 mΩ MAX

**STANDARD**  
 CERTIFIED: E323964

**SOLDERING**  
 JEDEC LEAD FREE REFLOW SOLDERING PROCESS

**PACKAGING**  
 TAPE & REEL

RoHS Compliant				PROJECTION: 	GENERAL TOLERANCE .X = +/- 0.3 .XX = +/- 0.20		DESCRIPTION: WR-COM - MICRO USB 2.0 TYPE AB - HORIZONTAL - SMT	SIZE <b>A4</b>
G								
F								
E								
D								
C			APPROVAL: NPr	UNIT: MM	DESCRIPTION: WR-COM - MICRO USB 2.0 TYPE AB - HORIZONTAL - SMT		SIZE <b>A4</b>	
B	24-NOV-15	UL CERTIFICATION	AK	SCALE:	WERI PART NO: 629 105 150 921			
A	04-AUG-14	PDF	AS	SHEET: 1/3				
REV	DATE	FILE	BY	DRAW: AS				

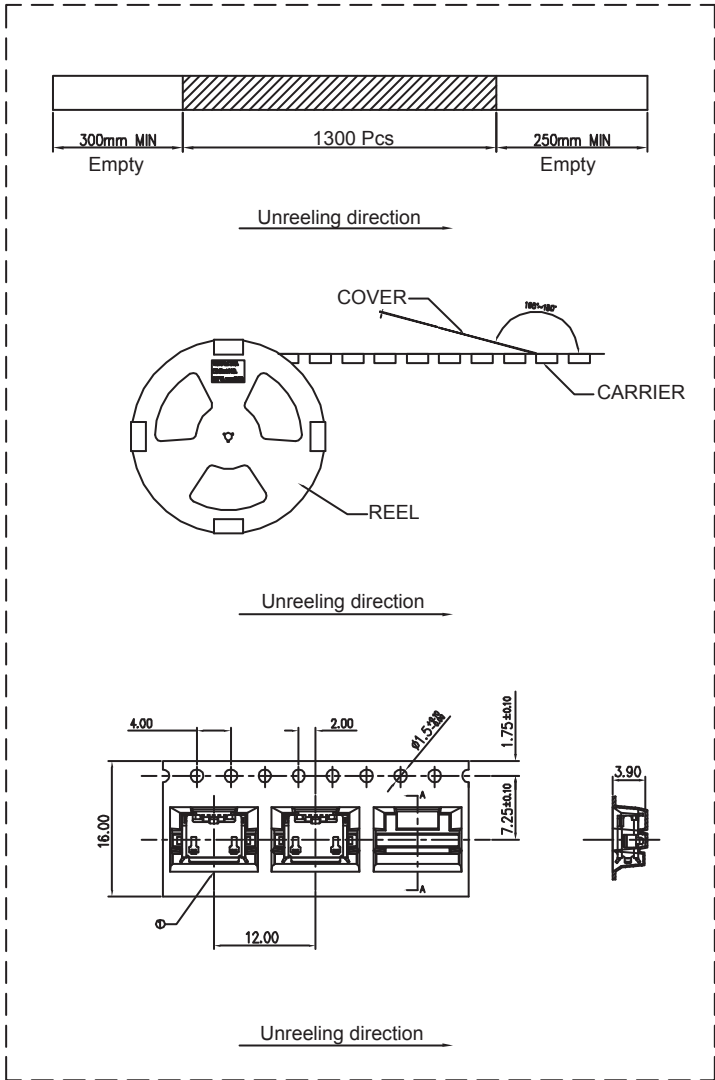
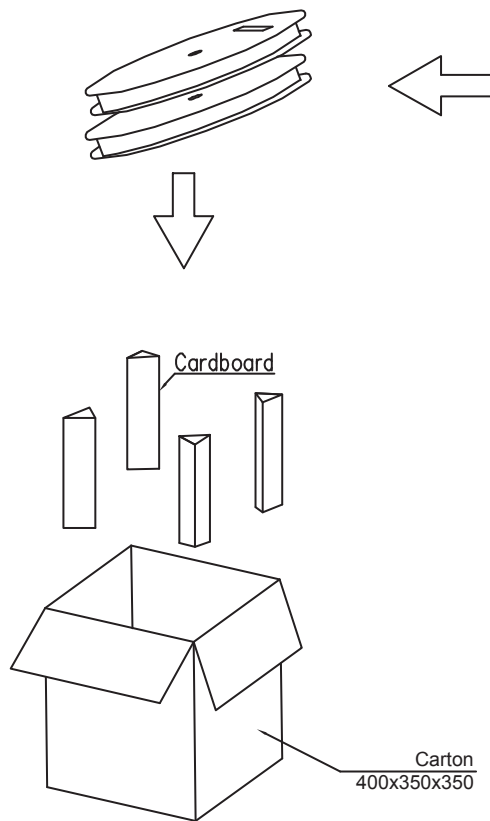
1

2

3

4

5



1300 Pcs/Reel  
16 Reels/Carton  
20800 Pcs/Carton

RoHS Compliant			
G			
F			
E			
D			
C			
B			
A	30-JUL-14	PDF	AS
REV	DATE	FILE	BY

PROJECTION:
APPROVAL: TJ

GENERAL TOLERANCE
.X = +/- 0.2
.XX = +/- 0.15
UNIT: MM
SCALE:
SHEET: 2\3
DRAW: AS

DESCRIPTION: WR-COM - MICRO USB 2.0 TYPE AB - HORIZONTAL - SMT
WERI PART NO: 629 105 150 921

SIZE
<b>A4</b>

A

B

C

D

1

2

3

4

5

## Cautions and Warnings:

This electronic component is designed and developed with the intention for use in general electronics equipments.

Before incorporating the components into any equipments in the field such as aerospace, aviation, nuclear control, submarine, transportation, (automotive control, train control, ship control), transportation signal, disaster prevention, medical, public information network etc. where higher safety and reliability are especially required or if there is possibility of direct damage or injury to human body, Würth Elektronik must be asked for a written approval.

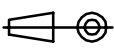

In addition, even electronic component in general electronic equipments, when used in electrical circuits that require high safety, reliability functions or performance, the sufficient reliability evaluation-check for the safety must be performed before by the user before usage.

A

B

C

RoHS Compliant

G				PROJECTION: 	GENERAL TOLERANCE .X = +/- 0.2 .XX = +/- 0.15		
F							
E							
D							
C				APPROVAL: JC	UNIT: MM	DESCRIPTION: DISCLAIMER	SIZE <b>A4</b>
B					SCALE:		
A	10-SEP-14	PDF	QL		SHEET: 3/3	WERI PART NO: DISCLAIMER	
REV	DATE	FILE	BY		DRAW: QL		

D