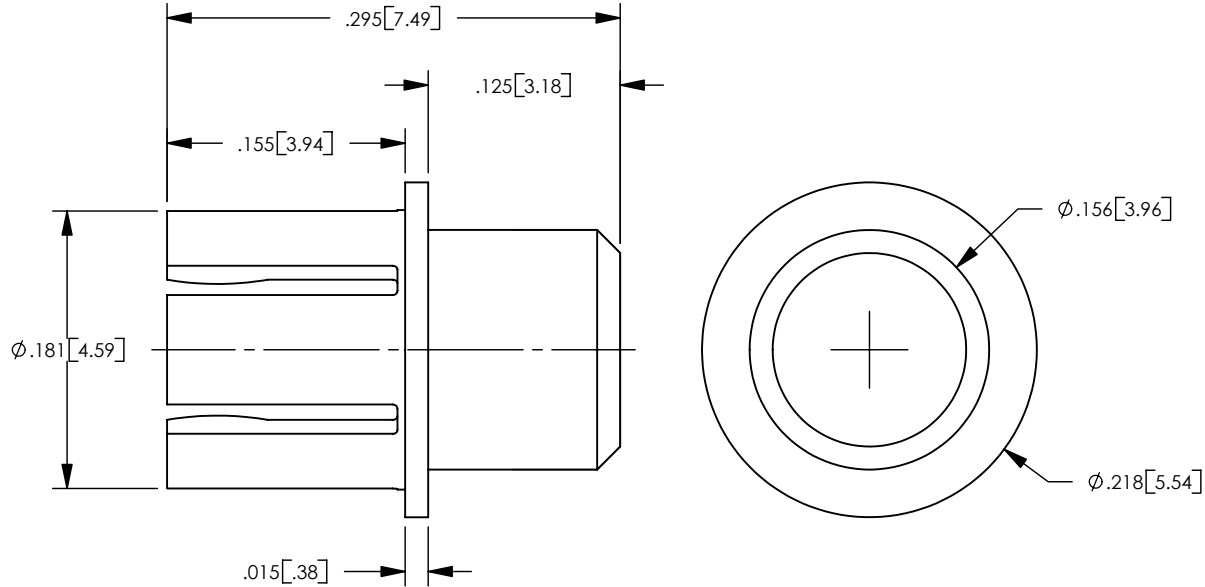


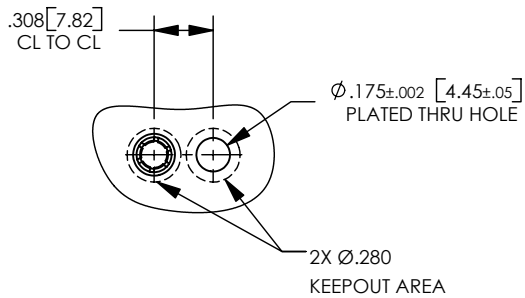
NOTES: UNLESS OTHERWISE SPECIFIED

1. MATERIAL SPECIFICATIONS:  
BODY: BRASS PER ASTM B16
2. FINISH SPECIFICATIONS:  
BODY: .000010 MIN. GOLD PER SAE-AMS-2422 OVER  
.000080 MIN. NICKEL PER SAE-AMS-QQ-N-290
3. FORCE DATA (MATED WITH CATALOG No. 01369)  
MIN. ENGAGEMENT: 2.0lbs.  
MAX. DISENGAGEMENT: 3.5lbs.  
DURABILITY: 50 CYCLES

REV	DESCRIPTION	BY DATE	APPD
A	RELEASED PER ECR8821	CWB 02/16/06	LMD



CATALOG No. 01370 SHOWN



RECOMENDED PCB  
MOUNTING HOLE &  
KEEPOUT AREA

PER ASME Y14.5M-1994  
UNLESS OTHERWISE SPECIFIED:  
DIMENSIONS ARE IN INCHES [MM]  
TOLERANCES:  
DECIMAL: .XX ± .01 [0.3]  
.XXX ± .005 [0.13]  
.XXXX ± .XXXX  
ANGLES: ± 2° SCALE: 4:1

**NORTHROP GRUMMAN**

**Winchester Electronics** 62 Barnes Industrial Road North  
Wallingford, CT 06492

CUSTOMER  
DRAWING



LOW PROFILE THRU HOLE SOCKET  
(RoHS)

DRAWN CWB	DATE 12/14/05	APPROVED WPM	DATE 02/16/06
APPROVED LMD	DATE 12/14/05	APPROVED TMC	DATE 02/16/06

<b>A</b>	SD01370	SHT 1 OF 1	REV <b>A</b>
----------	---------	------------	-----------------