



# SOT96-1

SO8; Reel pack; SMD, 13"  
Q1/T1 Standard product orientation  
Orderable part number ending, 518 or Y  
Ordering code (12NC) ending 518

Rev. 1 — 2 June 2014

Packing information

## 1. Packing method

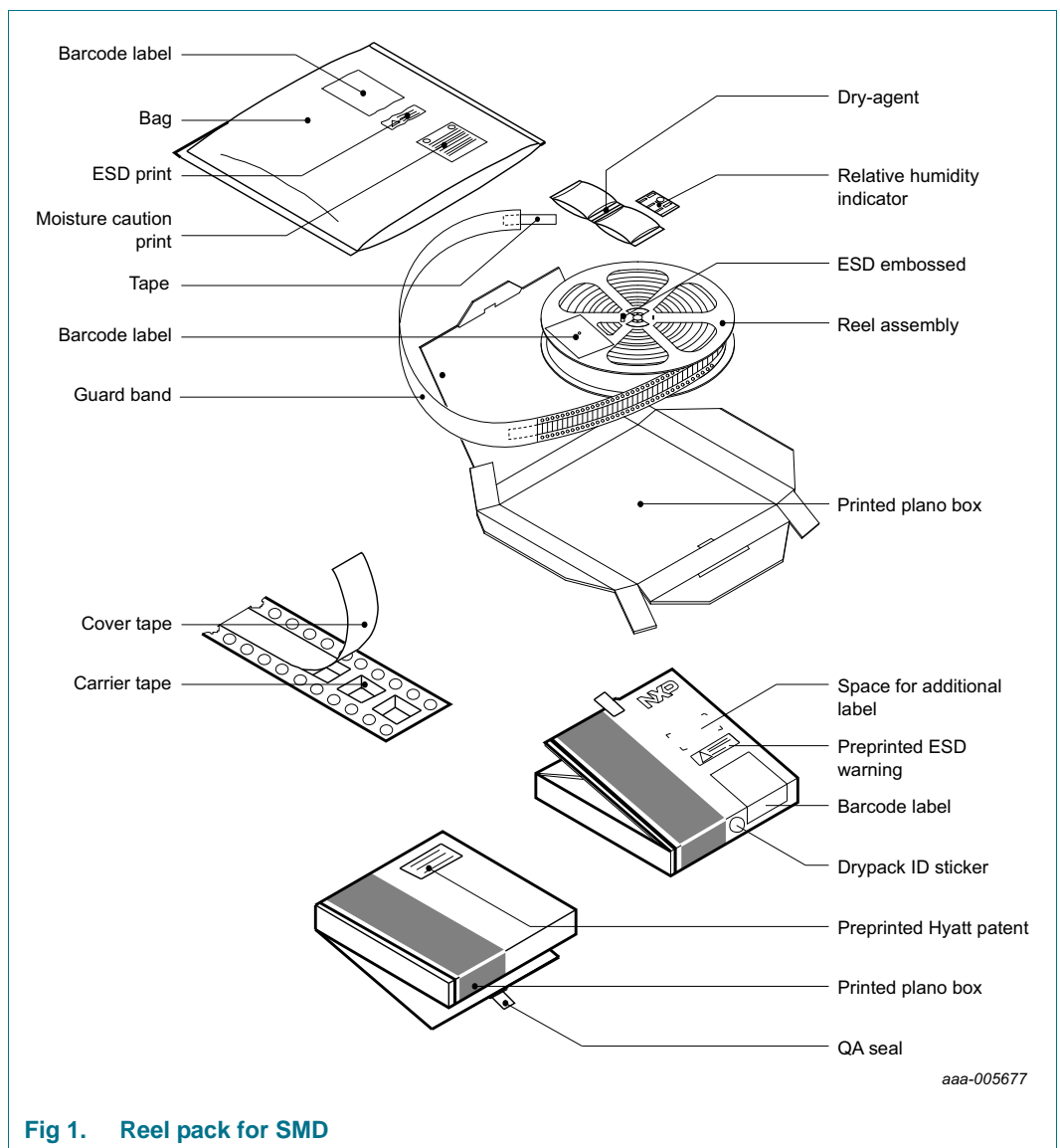


Fig 1. Reel pack for SMD

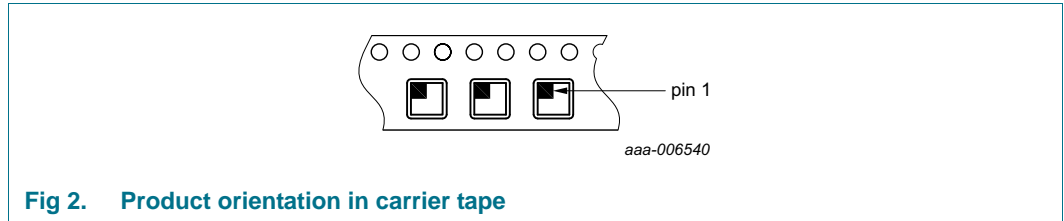


SO8; Reel pack; SMD, 13"  
 Q1/T1 Standard product orientation  
 Orderable part number ending, 518 or Y  
 Ordering code (12NC) ending 518

**Table 1. Packing information**

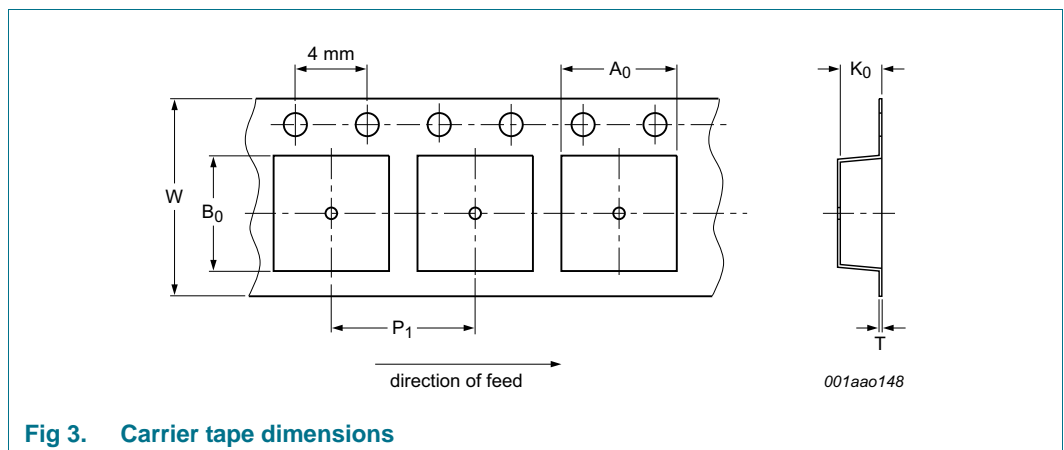
Reel dimensions d x w (mm)	SPQ/PQ (pcs)	Reels per box	Outer box dimensions l x w x h (mm)
330 x 12	2500	1	339 x 337 x 36

## 2. Product orientation



**Fig 2. Product orientation in carrier tape**

## 3. Carrier tape dimensions



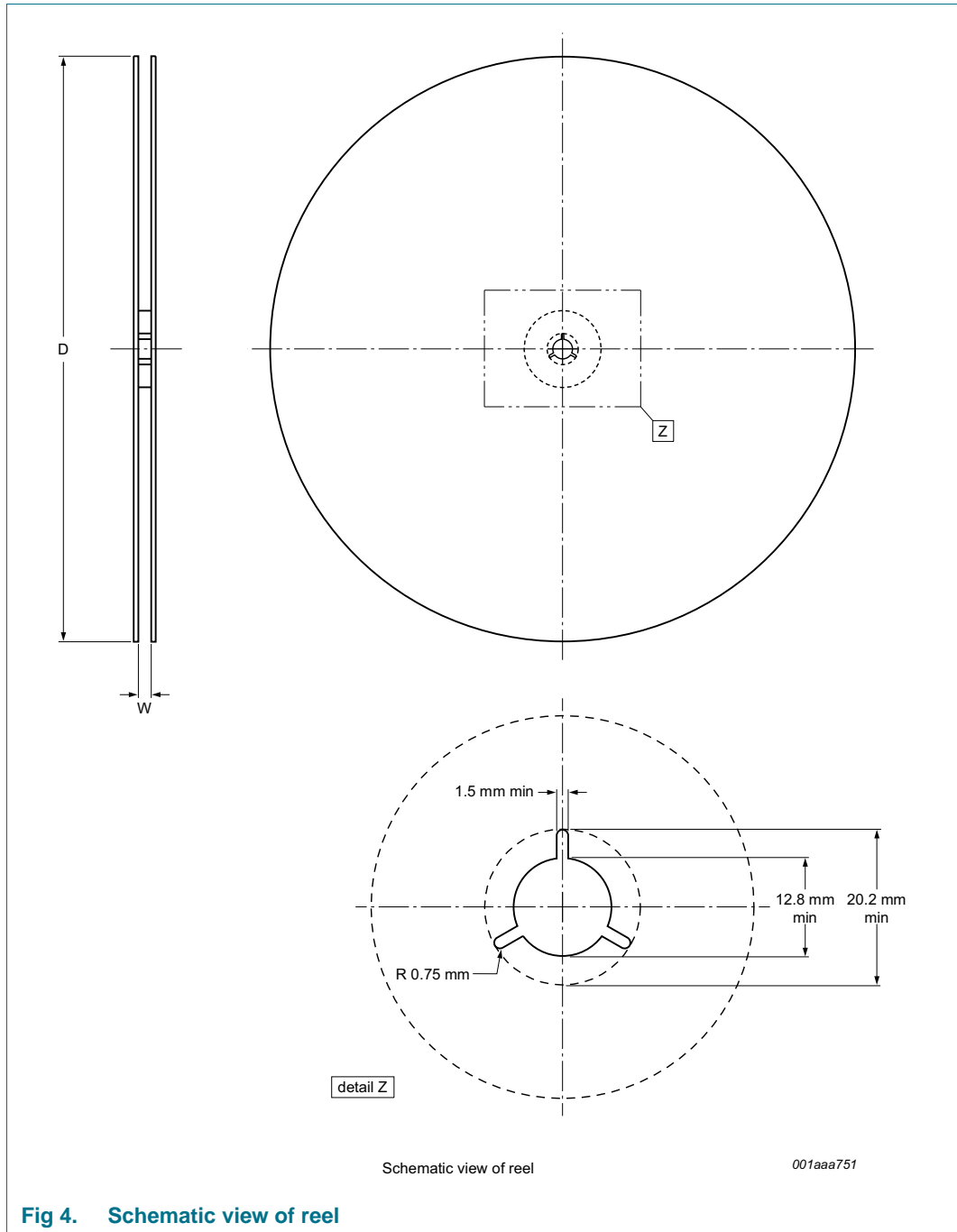
**Fig 3. Carrier tape dimensions**

**Table 2. Carrier tape dimensions**

In accordance with IEC 60286-3.

$A_0$ (mm)	$B_0$ (mm)	$K_0$ (mm)	T (mm)	$P_1$ (mm)	W (mm)
6.4	5.4	2.05	-	8	12

**4. Reel dimensions**



**Fig 4. Schematic view of reel**

**Table 3. Reel dimensions**  
 In accordance with IEC 60286-3.

D (mm)	W (mm)
330	12

SO8; Reel pack; SMD, 13"  
 Q1/T1 Standard product orientation  
 Orderable part number ending, 518 or Y  
 Ordering code (12NC) ending 518

5. Barcode label

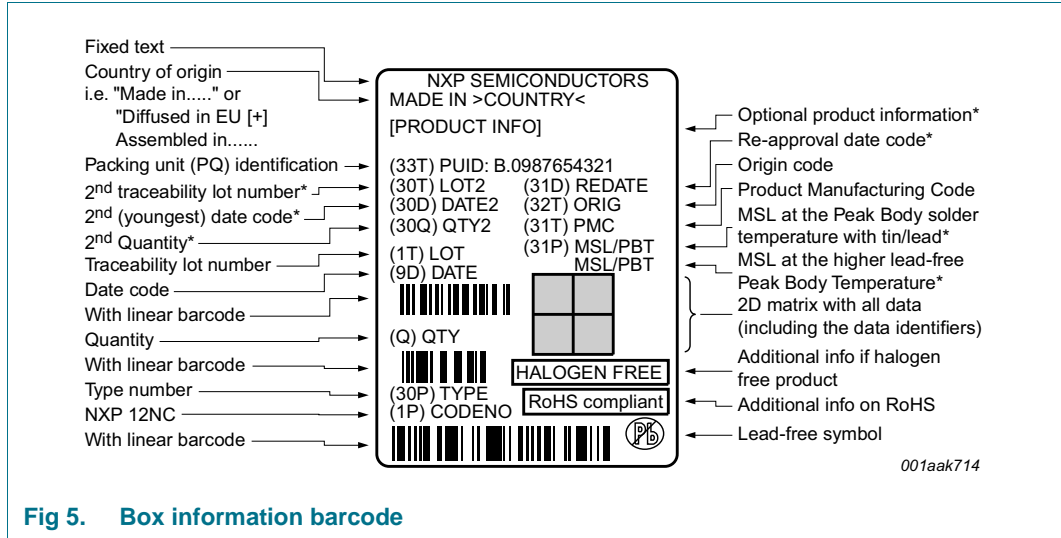


Fig 5. Box information barcode

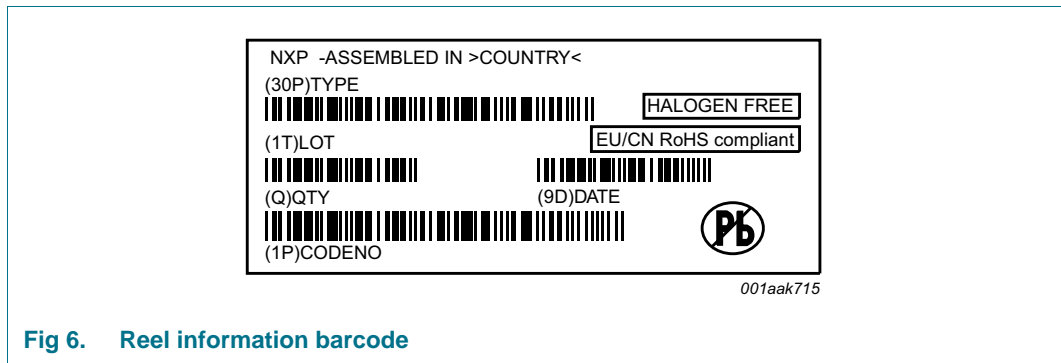


Fig 6. Reel information barcode

Table 4. Barcode dimensions

Box barcode label l x w (mm)	Reel barcode label l x w (mm)
100 x 75	35 x 75

Limited warranty and liability

Information in this document is believed to be accurate and reliable. However, NXP Semiconductors does not give any representations or warranties, expressed or implied, as to the accuracy or completeness of such information and shall have no liability for the consequences of use of such information.

© NXP Semiconductors N.V. 2014.

All rights reserved.

For more information, please visit: <http://www.nxp.com>  
 For sales office addresses, please send an email to: [salesaddresses@nxp.com](mailto:salesaddresses@nxp.com)

Date of release: 2 June 2014  
 Document identifier: SOT96-1\_518