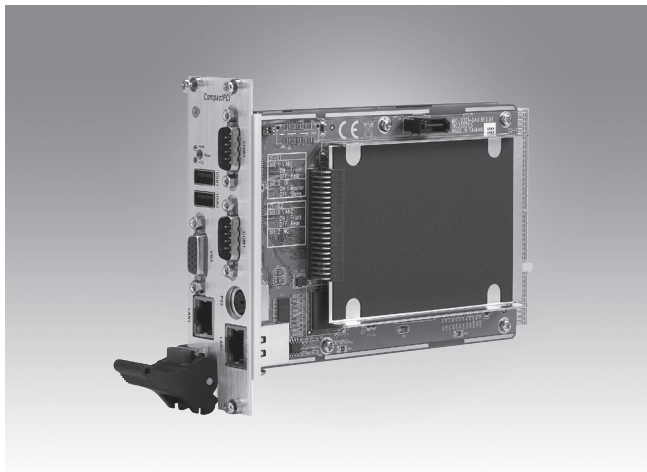


# MIC-3321

## 3U CompactPCI® Intel Celeron® M 1GHz / Pentium® M 2 GHz Controller



### Features

- Built-in Intel® Pentium® M 760 2.0 GHz processor/ Celeron® M Ultra Low Voltage 373 1.0GHz processor
- Mobile Intel® 915GM express chipset
- Supports up to 1GB DDR2 533/400 SDRAM soldered on board
- Extended operating temp: -25 ~ 70°C ( -13 ~ 158°F) (Optional: MIC-3321C only)
- Dual Giga LAN on PCI-Express
- High-performance Intel Graphics Media Accelerator 900 VGA display
- Onboard CompactFlash® disk socket
- Onboard 2.5" HDD support
- Rear I/O signal support for easy wiring (Only for MIC-3321D-DE)

### Introduction

The MIC-3321D is a 3U CompactPCI system controller board that combines the performance of Intel's Mobile Pentium M 760 2.0GHz processor with the high integration of the 915GM chipset and the I/O Controller Hub ICH6. The MIC-3321C with the low power of the Intel Mobile Celeron M makes it possible to work with high extended temperature ranges. The directly soldered CPU and memory provides less weight and a higher shock/vibration resistance than socket devices. In all, MIC-3321 is a powerful 3U CompactPCI Controller that fulfills requirements in mission critical applications, such as military defense, transportation, traffic control, test and measurement (T&M) as well as critical data acquisition & control applications.

### Specifications

<b>CPU</b>	MIC-3321D: Intel Pentium M 760 2.0 GHz with 2 MB L2 cache
	MIC-3321C: Intel Celeron M Ultra Low Voltage 373 1.0 GHz with 512 KB L2 cache
<b>Chipset</b>	Intel 915 GM (GMCH) + Intel 82801FBM (ICH6-M)
<b>BIOS</b>	Award 4 MB Flash
<b>Bus</b>	Front Side Bus 533 MHz (Intel Pentium M 760 2.0 GHz CPU) 400 MHz (Intel Celeron M Ultra Low Voltage 373 1.0 GHz CPU) PCI-to-PCI Bridge: PERICOM PIT7C8150
	PCI Bus 7 x 32-bit/33MHz CompactPCI bus Master interface 3.3 V/5 V VIO adjustable
<b>Memory</b>	Directed Soldered 512 MB DDR2 SDRAM
<b>Graphics</b>	Controller: Intel Graphics Media Accelerator 900
	VRAM: DVMT3.0 128MB
	Resolution: Up to 2048 x 1536 with 32-bit color at 75 Hz
<b>Ethernet</b>	Interface: 10/100/1000 Mbps Gigabit Ethernet
	Controller: 2 x Intel 82573E/L PCI Express Gigabit Ethernet Controllers
	Connector: 2 x RJ-45
	Supports Pre-boot Execution Environment (PXE)
<b>Serial</b>	Interface: RS-232
	Controller: 2 x 16C550 Compatible
	Data Bits: 5, 6, 7, 8
	Stop Bits: 1, 1.5, 2
	Parity: None, Even, Odd
	Speed (bps): 50 ~ 115.2K
	Data Signal: TxD, RxD, RTS, CTS, DTR, DSR, DCD, RI, GND
	Connector: 2 x DB9 male
Two as front I/O, one as rear I/O	
<b>P-IDE</b>	One channel P-IDE
	Supports PIO mode 4 (16.67MB/s data transfer rate) and ATA 33/66/100 (33/66/100MB/s data transfer rate)
	1 x CompactFlash Socket Type II 1 x 44-pin 2.5" HDD connector
<b>USB</b>	4 x USB 2.0 channels up to 480Mbps, 2 as front I/O, 2 as rear I/O

<b>PS/2</b>	PS/2 for keyboard and mouse legacy support
<b>Watchdog Timer</b>	0 ~ 64s, 0.25s step, generate reset signal
<b>Hot Swap</b>	Support for all signals to allow peripheral boards to be hot swapped. The individual clocks for each slot and access to the backplane ENUM# signal comply with the PICMG 2.1 Hot Swap specification. (PCI to PCI bridge GPIO3)
<b>Front Panel Functions</b>	4HP Board 1 x VGA-CRT 15-pin D-SUB connector Ethernet: 1 x RJ-45 connector with integrated LEDs USB: 2 x 4-pin connectors Reset: Reset button, guarded LED: Power, HDD
	8HP Board (Additional to 4HP) COM1: 1 x DB9 RS-232 connector COM3: 1 x DB9 RS-232 connector PS/2: 1 x PS/2 connector for keyboard and mouse Ethernet: 1 x RJ-45 connector with integrated LEDs
<b>Rear I/O via J2 (Only for MIC-3321D-DE)</b>	2 x USB 2.0 channels
	2 x Gigabit Ethernet channels with LED (shared with front I/O)
	1 x COM port
	1 x VGA-CRT channel (shared with front I/O) 1 x PS/2 keyboard/mouse channel (shared with front I/O)
<b>Compliance</b>	PICMG 2.0 Rev. 3.0 compatible CompactPCI Hot Swap Specification PICMG 2.1 R2.0
<b>Environment</b>	Operating Temperature 0 ~ 50°C/ 32 ~ 122°F (Pentium M 2.0G / Celeron M 1.0G CPU) -25 ~ 70°C/ -13 ~ 158°F (Optional: Celeron M 1.0G CPU only)
	Storage Temperature -40 ~ 80°C/ -40 ~ 176°F
<b>Physical</b>	Dimensions (L x H) 160 x 100 mm (3U)
	Weight 0.6 kg

### Ordering Information

Part Number	Description
MIC-3321D-CE	Pentium M 2.0 GHz, 2MByte L2 cache, 512 MByte soldered DDR2 SDRAM, 8 HP width
MIC-3321C-CE	Celeron M 1.0 GHz, 512KByte L2 cache, 512 MByte soldered DDR2 SDRAM, 8 HP width