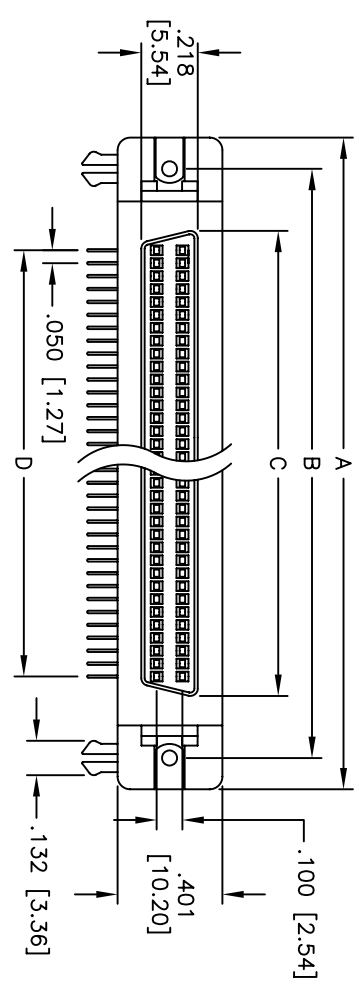
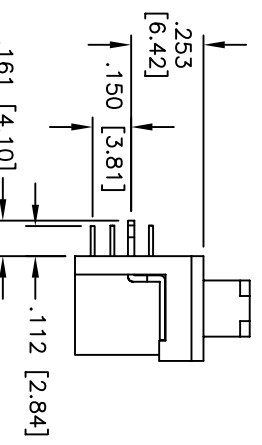
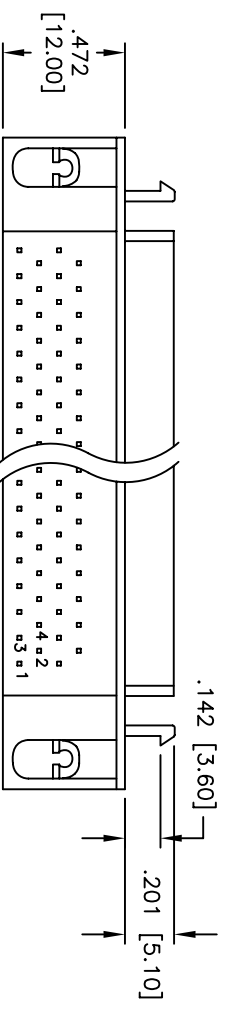


Rev	AWO #	Description	Date	Appr
-		RELEASED	5/12/05	

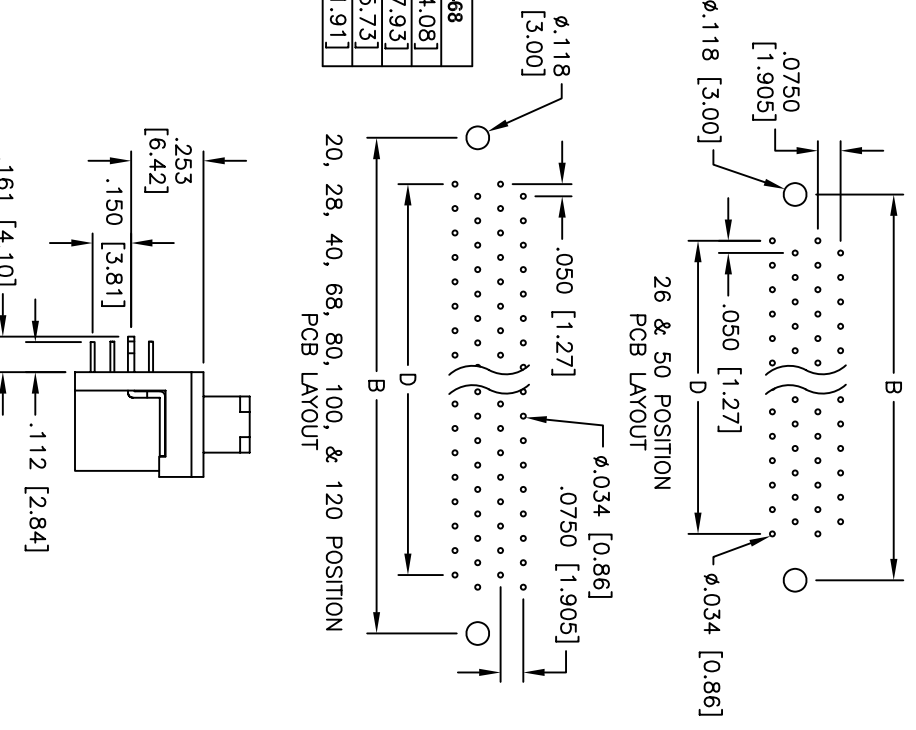
APPROVED: \_\_\_\_\_  
 DATE: \_\_\_\_\_ TITLE: \_\_\_\_\_



	S2A-SR-20	S2A-SR-26	S2A-SR-28	S2A-SR-40	S2A-SR-50	S2A-SR-68
A	1.323 [33.60]	1.469 [37.30]	1.523 [38.68]	1.823 [46.30]	2.073 [52.65]	2.523 [64.08]
B	1.081 [27.45]	1.228 [31.20]	1.281 [32.53]	1.581 [40.15]	1.831 [46.50]	2.281 [57.93]
C	0.600 [15.25]	0.750 [19.05]	0.800 [20.33]	1.100 [27.95]	1.350 [34.30]	1.800 [45.73]
D	0.450 [11.43]	0.600 [15.24]	0.650 [16.51]	0.950 [24.13]	1.200 [30.48]	1.650 [41.91]



	S2A-SR-80	S2A-SR-100	S2A-SR-120
A	2.823 [71.70]	3.323 [84.40]	3.823 [97.10]
B	2.581 [65.55]	3.081 [78.25]	3.581 [90.95]
C	2.100 [53.35]	2.600 [66.05]	3.100 [78.75]
D	1.950 [49.53]	2.450 [62.23]	2.950 [74.93]



**SPECIFICATIONS:**

**Material:**  
 Insulator: PBT, glass reinforced, rated UL 94V-0  
 Insulator color: Black  
 Contacts: Phosphor Bronze  
 Metal Backshell: Zinc, Nickel plated  
 Plating:  
 Gold flush over Nickel underplate on mating area,  
 Tin over Copper underplate on tails

**Electrical:**  
 Operating voltage: 250 VAC max  
 Current rating: 1 Amp max  
 Contact resistance: 35 mohms max  
 Insulation resistance: 500 Mohms min  
 Dielectric withstanding voltage: 500 VAC for 1 minute  
 Temperature Rating:  
 Operating temperature: -55°C to +105°C

**Environmental:**  
 Lead free, RoHS compliant  
 Recommended soldering temp: 235°C for 5 seconds



**ADAM TECH**

909 Rahway Avenue, Union, NJ 07083  
 Phone: 908-687-5000 Fax: 908-687-5710

SCSI III/II SOCKET, R/A, W/LATCH BLOCKS  
 BOARDLOCKS, #4-40 MOUNTING HOLES

UNLESS OTHERWISE SPECIFIED ALL DIMENSIONS ARE IN INCHES [MM]		TOLERANCES: EXCEPT AS NOTED	
INCHES		HOLDERS	
.X	$\pm$ .10	$\phi$ X	$\pm$ .10
.XX	$\pm$ .020	$\phi$ XX	$\pm$ .015
.XXX	$\pm$ .015	$\phi$ XXX	$\pm$ .010
APPROVALS		DATE	
DRAWN	SS	5/12/05	
CHECKED			
APPROVED			
SIZE	PART NO.	REV.	
X	S2A-SR-XXX-3-BL-1		
REF:	SCALE: NTS	SHEET	1 OF 1