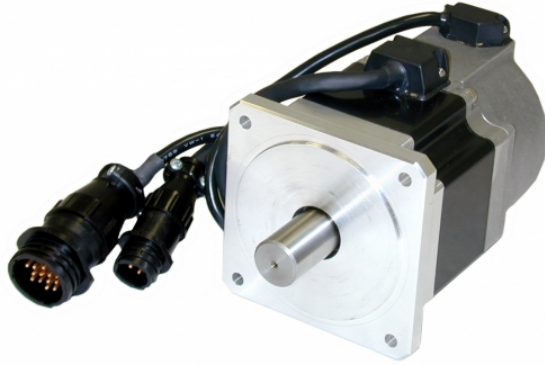


M0400-102-5-000

80mm Servo Motor, 400W

1pc. - 400.00
50pc. - 400.00



Product Features

- *High torque density*
- *Low rotor inertia*
- *Compact size*
- *High-resolution, incremental encoders (2000 lines, 8000 counts)*







Description

High performance brushless AC servo motor. Standard configuration includes high-resolution, incremental encoder feedback.

Specifications

Part Number:	M0400-102-5-000
Frame Size:	80 mm
Continuous Torque:	11 in-lb
Peak Torque:	34 in-lb
Rated Power:	400 watts
Rated Voltage:	200 volts
Rated Speed:	3000 rpm
Peak Speed:	5000 rpm
Rated Current:	2.8 A rms
Peak Current:	8.0 A rms
Torque Constant:	4.3 in-lb/A
Voltage Constant:	50.8 V/krpm
Armature Resistance:	2.7 ohms
Armature Inductance:	13 mH
Motor Length:	4.06 inch
Rotor Inertia:	7.93E-03 oz-in-sec ²
Weight:	3.5 lbs
Integral Holding Brake:	No
Storage Temperature:	-10 to 85 °C
Operating Temperature:	0 to 40 °C
Insulation Class:	Class B (130 °C)
Maximum Radial Load:	44 lbs
Maximum Thrust Load:	15.4 lbs
Shaft Run Out:	0.0008 inch T.I.R. max
End Play:	0.008 inch max
Perpendicularity:	0.003 inches
Concentricity:	0.002 inches

Downloads

Datasheet:	http://s3.amazonaws.com/applied-motion-pdf/M0400-102-5-000.pdf
Family Datasheet:	 Servo-Products-Datasheet-925-0008.pdf
2D Drawing:	 M0400-102-5-000_RevC.pdf
3D Drawing:	 M0400-102-5-000.igs
Speed-Torque Curves:	 SVAC3_speed-torque.pdf

Pricing

	M0400-102-5-000 Part No. M0400-102-5-000
1pc.	\$400.00
25pc.	
50pc.	
100pc.	Request a Quote for 100+ piece pricing.