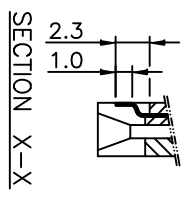
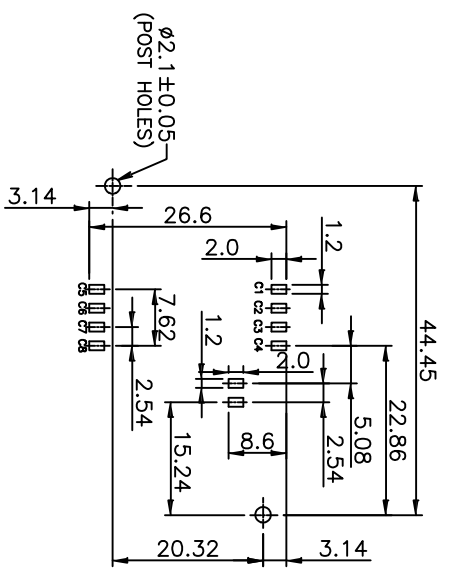
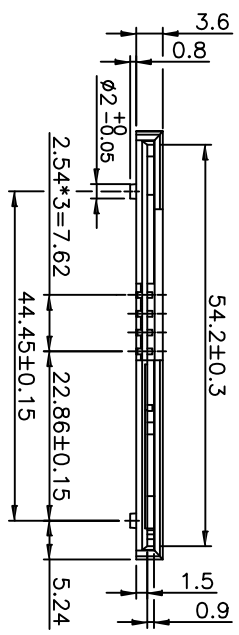
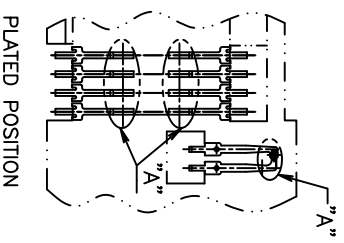
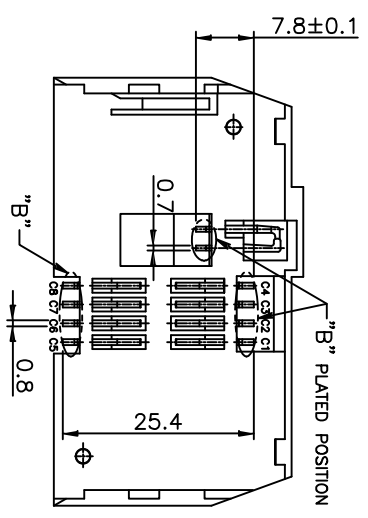
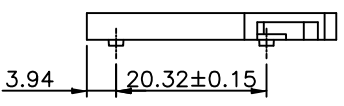
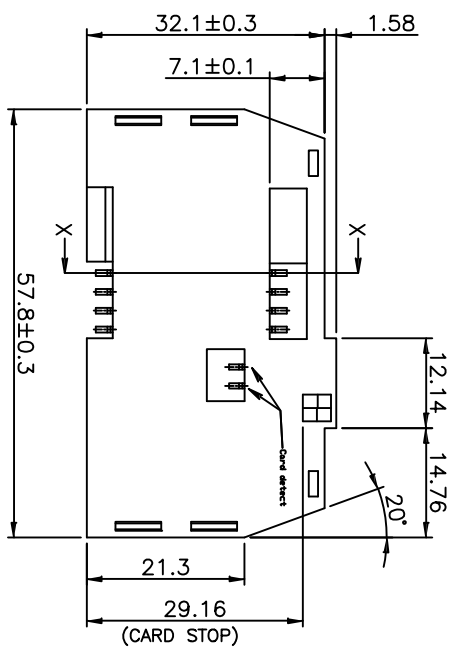


APPROVED: _____
 DATE: _____ TITLE: _____

Rev	AWO #	Description	Date	Appr
-		RELEASED	7/08/10	



RECOMMENDED P.C.B LAYOUT

SPECIFICATIONS:

Material:
 Cover: Hi-temp thermoplastic, rated UL 94V-0, color Brown
 Base: Hi-temp thermoplastic, rated UL 94V-0, color Black
 Contacts: Phosphor Bronze
Plating:
 Gold flash over Nickel underplate on contact area,
 Tin over copper underplate on tails.

Electrical:
 Current rating: 0.5 Amp max
 Contact resistance: 100 mohms max
 Insulation resistance: 1,000 Mohms min
 Dielectric withstanding voltage: 500 VAC for 1 minute
Temperature Rating:
 Operating temperature: -40°C to +155°C

Environmental:
 Lead free, RoHS compliant
 Recommended soldering temp: 260°C for 5 seconds



ADAM TECH

909 Rahway Avenue, Union, NJ 07083
 Phone: 908-687-5000 Fax: 908-687-5710

SMART CARD SOCKET, SMT TYPE
 NORMAL CLOSE TYPE

UNLESS OTHERWISE SPECIFIED ALL DIMENSIONS ARE MM TOLERANCES: EXCEPT AS NOTED INCHES		TITLE	
.X ± .10	ØX ± .10	SMART CARD SOCKET, SMT TYPE	
.XX ± .020	ØXX ± .015	NORMAL CLOSE TYPE	
.XXX ± .015	ØXXX ± .010		
APPROVALS	DATE	REF:	SCALE: NTS
DRAWN	DY	7/08/10	
CHECKED			
APPROVED			
SIZE	PART NO.	SCALE	SHEET 1 OF 1
X	SCS-6-08-NC-SG		
REV.			