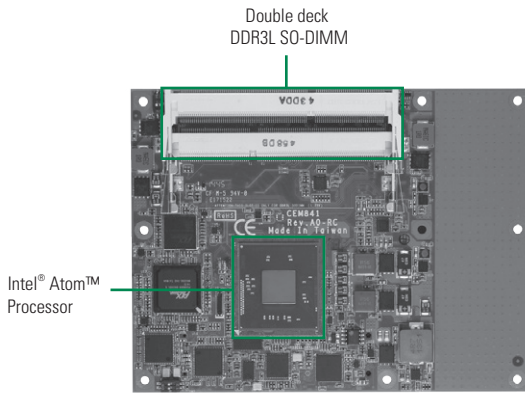


CEM841

Intel® Celeron® Processor J1900/N2807
COM Express Type 2 Basic Module



System

CPU	Intel® Celeron® processor J1900 2 GHz or Celeron® N2807 1.58 GHz onboard
System Memory	2 SO-DIMM support DDR3L-1066/1333 max up to 8 GB
Chipset	SoC integrated
BIOS	AMI uEFI
SSD	N/A
Watchdog Timer	255 levels, 1~255 sec. or min.
Expansion Interface	1 PCIe x4 plus 4 x PCIe x1 (or 3 x PCIe x1 while internal LAN is connected)
Battery Lithium	N/A
Power Requirements	ATX: +12V and 5VSB or AT: +12V
Size	125 x 95 mm
Board Thickness	2.0 mm
Temperature	0° ~ +60°C (32°F ~ 140°F), operation
Operation Humidity	10% ~ 95% relative humidity, non-condensing

I/O

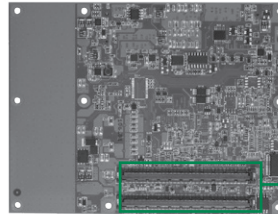
MIO	1 x LPC interface 1 x IDE
SATA	1 x SATA-300
Hardware Monitoring	Yes
Ethernet	1 port as 10/100/1000Mbps supports Wake-on-LAN, PXE Boot ROM with Intel® i210AT
Audio	HD link interface to baseboard for Codec
USB	8 x USB 2.0
SMBus	Yes
Digital I/O	4 channels IN & 4 channels OUT

Display

Chipset	Intel® HD graphics (Gen 7 Gfx) display engine Gfx APIs – DX11, OCL 1.2, OGL 3.0 2 independent displays
Display Interface	1 x VGA 1 x LVDS; 18/24-bit dual channel

Features

- Intel® Celeron® J1900/N2807 Quad/ Dual Core processor (Bay Trail)
- 2 SO-DIMM DDR3L-1066/1333 max up to 8 GB
- Max. up to 8 lanes of PCI Express
- 1 SATA-300 and 1 IDE interfaces
- 8 USB 2.0 ports



▲ Rear view

Packing List

Quick installation guide, user's manual/utility CD

Ordering Information

Standard

CEM841VG-N2807	COM Express type 2 with Intel® Celeron® N2807, VGA/ LVDS, USB and 10/100/1000Mbps Ethernet (P/N: E38D841100)
CEM841VG-J1900	COM Express type 2 with Intel® Celeron® J1900, VGA/ LVDS, USB and 10/100/1000Mbps Ethernet (P/N: E38D841101)

Optional Accessories

CEB94000	ATX form factor type 2 evaluation baseboard (P/N: E394000100)
5078D841100E	CEM841/2/3 Heatspreader
5078D842200E	CEM841/2/3 Heatsink without fan

SBC
Services
and Solutions

2

Systems
on
Modules

Embedded
SBCs
>EPIC

Embedded
SBCs
>3.5" Capa

Embedded
SBCs
>Nano-ITX

Embedded
SBCs
>Pico-ITX

Embedded
SBCs
>PC/104

Industrial
Motherboards

Slot CPU
Cards

ARM
Embedded
Boards

Accessories

Appendix

