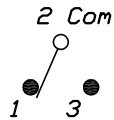


RECOMMENDED P.C.B. LAYOUT

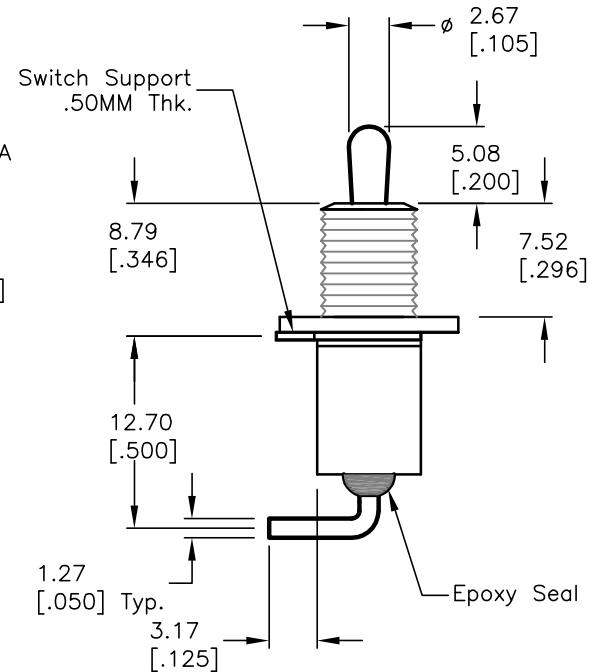
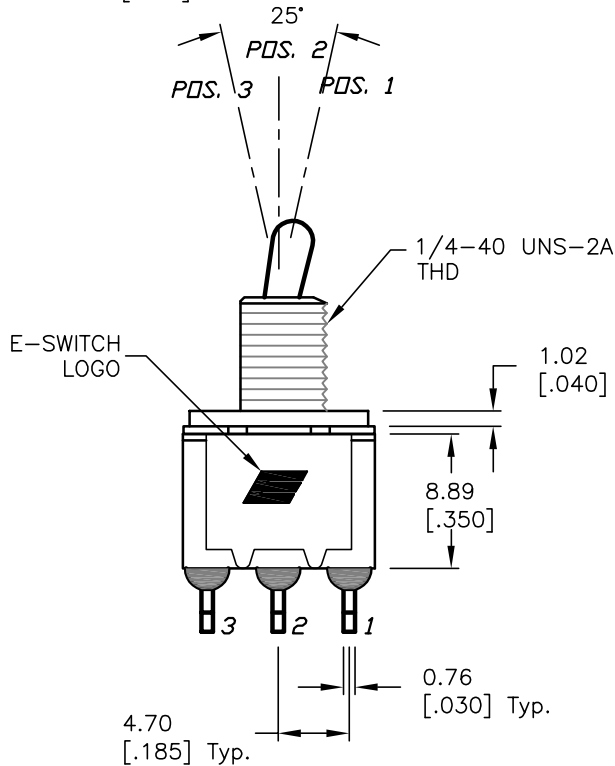
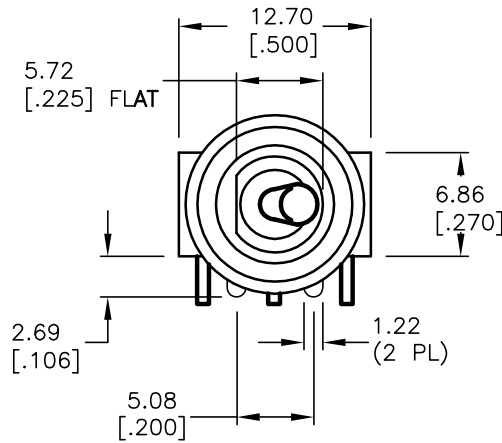


CIRCUIT: SPDT CONTACT CONFIGURATION

SWITCH FUNCTION		
PDS. 1	PDS. 2	PDS. 3
ON	NONE	ON
2-3	OPEN	2-1

NOTES:

1. ALL DIMENSIONS IN MM [INCH]
2. GENERAL TOLERANCE: X.X=±0.4  
X.XX=±0.25
3. TERM. NOS. FOR REF. ONLY
4. RATING: 2 AMPS @ 250VAC  
5 AMPS @ 120VAC OR 28VDC
5. FIXED TERM. & MOVING CONTACT:  
SILVER PLATE OVER COPPER ALLOY
6. ELECTRICAL LIFE: 50,000 make-and-break cycles at full load.
7. INSULATION RESISTANCE: 1,000M ohm min.
8. DIELECTRIC STRENGTH: 1,000V RMS @sea level.
9. OPERATING TEMP.: -30°C to 85°C.
10. ▲ DESIGNATE MAJOR FEATURE.



**E-SWITCH®**

TITLE				
100SP1T2B9M6QE				
SCALE	DATE	DR	DWG	REV
2:1	12/11/03	AR	T110067	A

A	12652	RELEASED FOR PRODUCTION	12/11/03	AR
REV.	ECN No.	DESCRIPTION	DATE	CHKD
THE INFORMATION CONTAINED IN THIS DOCUMENT IS PROPRIETARY TO E-SWITCH AND IS NOT TO BE COPIED OR TRANSFERRED				