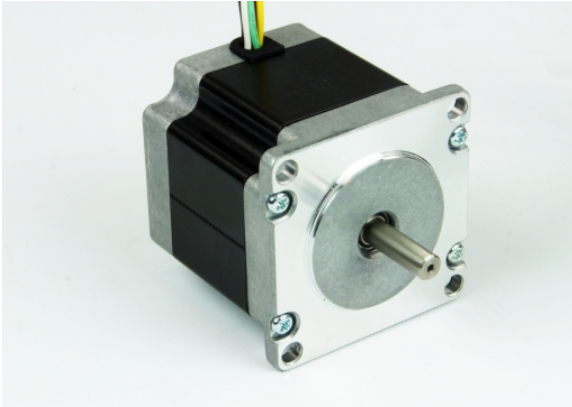


HT23-559

NEMA 23 High Torque Step Motor, 0.9 Degree

1pc. - 49.00
50pc. - 36.75



Product Features

- 2-phase hybrid step motor
- High torque design
- Standard NEMA 23 dimensions
- 400 steps per revolution



Description

Product Description:




The HT23-559 two-phase stepper motor is suitable for a wide range of motion control applications. 0.9 degree separation between steps improves step resolution.

Specifications

Part Number:	HT23-559
Frame Size:	NEMA 23
Motor Type:	High torque
Part Number w/Double Shaft:	HT23-559D
Motor Length:	2.13 inches
Number of Lead Wires:	6
Lead Wire Configuration:	flying leads, no connector
Lead Wire/Cable Length:	11.8 inches inches
Lead Wire Gauge:	26 AWG
Unipolar Holding Torque:	127.45 oz-in
Bipolar Holding Torque:	155.77 oz-in
Step Angle:	0.9 deg
Bipolar Series Current:	1.4 A/phase
Bipolar Series Resistance:	3.6 Ohms/phase
Bipolar Series Inductance:	16.5 mH/phase
Unipolar Current:	2.0 A/phase
Unipolar Resistance:	1.8 Ohms/phase
Unipolar Inductance:	4.1 mH/phase
Rotor Inertia:	3.68E-03 oz-in-sec ²
Integral Gearhead:	No
Weight:	1.32 lbs
Storage Temperature:	-30 to 70 °C
Operating Temperature:	-20 to 50 °C
Insulation Class:	Class B (130 °C)
Maximum Radial Load:	15.96 lbs
Maximum Thrust Load:	3.37 lbs
Shaft Run Out:	0.001 inch T.I.R. max

Radial Play:	0.001 inch max w/ 1.1 lb load
End Play:	0.003 inch max w/ 1.1 lb load
Perpendicularity:	0.004 inches
Concentricity:	0.003 inches

Downloads

Datasheet:	http://s3.amazonaws.com/applied-motion-pdf/HT23-559.pdf
2D Drawing:	 HT23-559_RevC.pdf
3D Drawing:	 HT23-559.igs  HT23-559D.igs

Pricing

	HT23-559 Part No. w/ Single Shaft	HT23-559D Part No. w/ Double Shaft
1pc.	\$49.00	\$49.00
25pc.	\$42.14	\$42.14
50pc.	\$36.75	\$36.75
100pc.	Request a Quote for 100+ piece pricing.	