

# High-Side Power Distribution Switch

## Features

- 120mΩ High-Side MOSFET
- 4 Versions of Current Limits with Foldback
- Operating Range:2.7V to 5.5V
- 150μS Typical Rise Time
- Under voltage Lockout
- 65μA Quiescent Supply Current
- 1μA Maximum Standby Supply Current
- Logic Level Enable Pin, Available with Active-High or Active-Low Version
- No Reverse Current when Power Off
- SOT-23-5 Package with 2 Pin Out Options
- UL Approved\_#E232223
- Nemko IEC 60950-1 CB/CCA\_scheme certification Report #67291

## Applications

- High-Side Power Protection Switch
- USB Power Management
- USB Host and Self-Powered Bubs
- USB Bus-Powered Hubs
- Hot Plug-In Power Supplies
- Battery-Charger Circuits

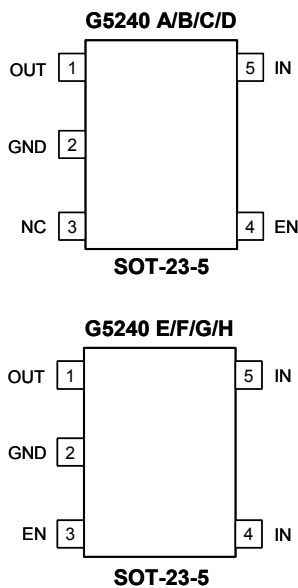
## General Description

The G5240 is an integrated 120mΩ power switch for self-powered and bus-powered Universal Serial Bus (USB) applications.

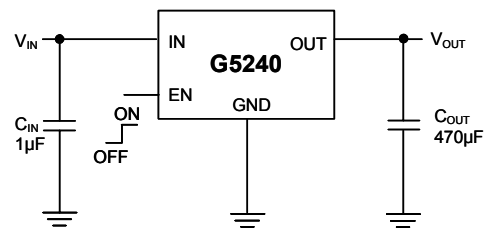
Several Protection features include current limiting with foldback, and thermal shutdown to prevent catastrophic switch failure caused by increasing power dissipation when continuous heavy loads or short circuit occurs. And a built-in charge pump is used to drive the N-channel MOSFET that is free of parasitic body diode to eliminate any reversed current flow across the switch when it is powered off.

Its low quiescent supply current and small package (SOT-23-5) is particularly suitable in battery-powered equipment, like PDA, mobile phone.

## Pin Configuration



## Typical Application Circuit



UL Recognized Component