

1. Features

- Typical 1dB bandwidth of 9.3 MHz
- High attenuation
- Single Ended Operation
- Surface Mounted Package (SMD)

RoHS Compliant

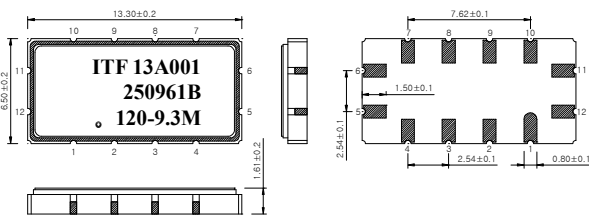
Tested by SGS Testing Korea

2. Electrical Specifications

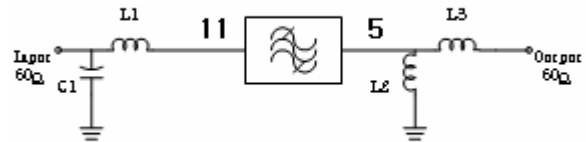
Source and Load Impedance = 50Ω

Room Temperature : +25°C		Minimum	Typical	Maximum
Center Frequency (fo)	MHz	-	120.0	-
Insertion Loss	dB	-	23.0	24.5
1dB Bandwidth	MHz	9.15	9.3	-
3dB Bandwidth	MHz	-	9.58	-
40dB Bandwidth	MHz	-	10.87	11.0
Amplitude Ripple (fo ± 4.375 MHz)	dB	-	0.5	1.0
Group Delay Variation (fo ± 4.375 MHz)	nsec	-	70	180
Absolute Delay	usec	-	1.76	-
Ultimate Rejection	dB	40	48	-
Temperature Coefficient of Frequency	ppm/°C	-	-18	-

S1365 Package Dimension



Matching Schematic



$L1 = L2 = L3 = 39\text{nH}, C1 = 27\text{pF}$

Dimensions shown are nominal in millimeters

Body : Al₂O₃
 Lid : Kovar, Ni Plated
 Termination : Au plating 0.3 ~ 1.0um, over a 1.27 ~ 8.89um Ni Plating

Pin Configuration

Pin Configuration			
Input	11	Ground	6, 12
Output	5	Others	Ground

3. Typical Performance (at +25°C)

