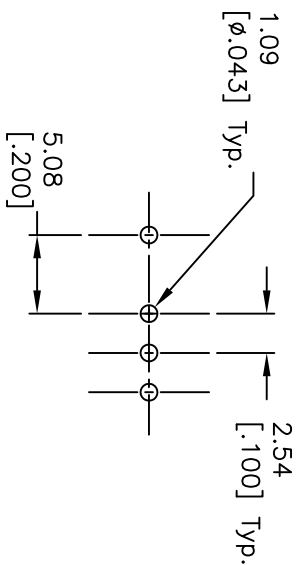
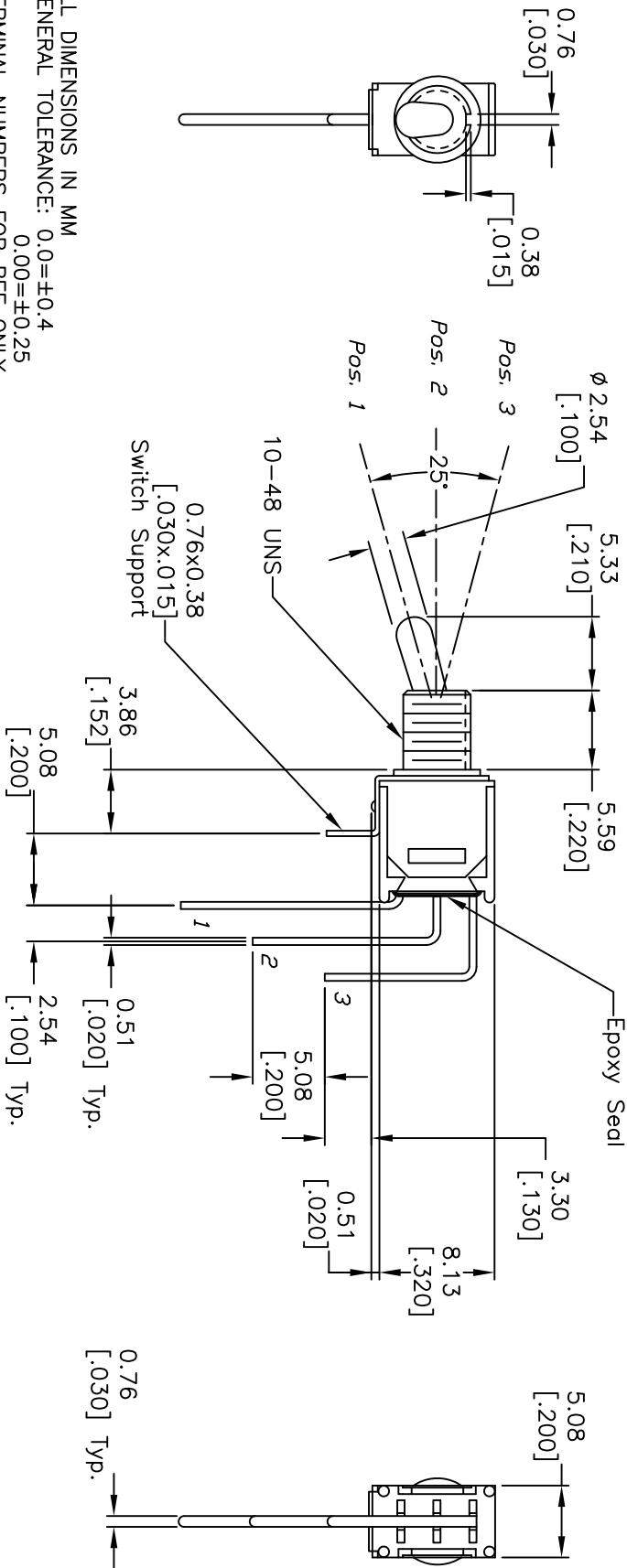


CIRCUIT: SPDT
CONTACT CONFIGURATION

SWITCH FUNCTION		
PDS: 1	PDS: 2	PDS: 3
DN	NONE	DN
2-3	OPEN	2-1



RECOMMENDED PCB LAYOUT



NOTES:

1. ALL DIMENSIONS IN MM
2. GENERAL TOLERANCE: 0.0=±0.4
0.00=±0.25
3. TERMINAL NUMBERS FOR REF ONLY
4. RATING: 3 AMPS @ 120VAC OR 28VDC;
1 AMP @ 250VAC
5. ELECTRIC LIFE: 30,000 make-and-break cycles
at full load.
6. INSULATION RESISTANCE: 1,000 Mega-ohm min.
7. DIELECTRIC STRENGTH: 1,000 V RMS @sea level.
8. OPERATING TEMP.: -30°C to 85°C



A		10670	RELEASED FOR PRODUCTION	6-8-00	GLG	TITLE	
REV.		ECN No.	DESCRIPTION	DATE	CHKD	200MSP1T2B3M7QE	
A		10670	RELEASED FOR PRODUCTION	6-8-00	GLG	SCALE	2:1
REV.		ECN No.	DESCRIPTION	DATE	CHKD	DATE	6-8-00
						DR	GLG
						DWG	T211017
						REV	A

THE INFORMATION CONTAINED IN THIS DOCUMENT IS PROPRIETARY TO E-SWITCH AND IS NOT TO BE COPIED OR TRANSFERRED