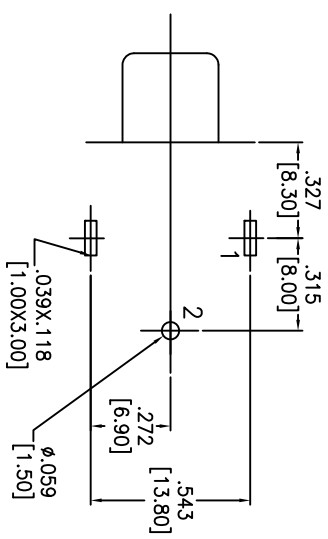
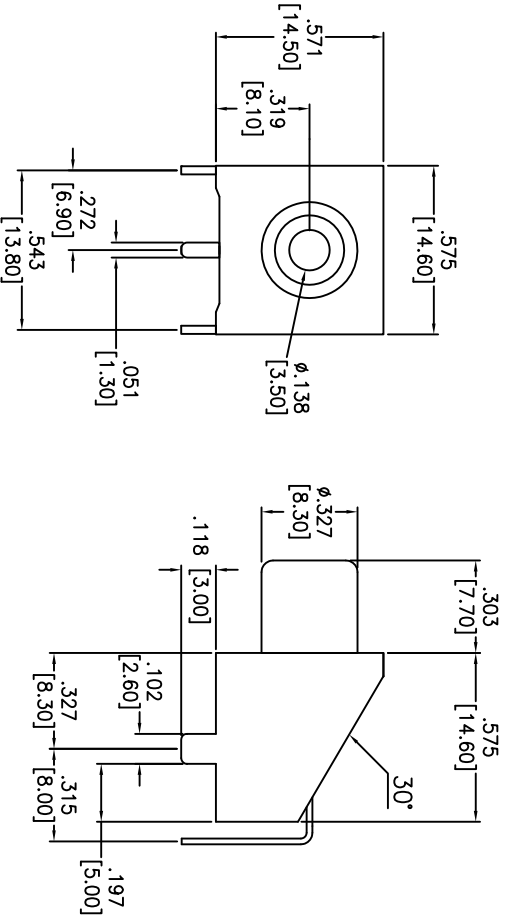
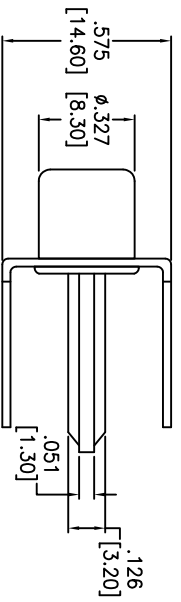


Rev	AWO #	Description	Date	Appr
-		RELEASED	7/20/10	

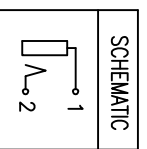
APPROVED: _____ TITLE: _____
 DATE: _____



RECOMMENDED PCB LAYOUT
 (BOTTOM VIEW)



COLOR	P/N:
YELLOW	RCA-27-1-Y
RED	RCA-27-1-R
WHITE	RCA-27-1-W
BLACK	RCA-27-1-B
BLUE	RCA-27-1-BL
GREEN	RCA-27-1-G
ORANGE	RCA-27-1-OR



SPECIFICATIONS:

- Material: PBT, color White
- Insulator: PBT
- Insert ring: PBT
- Inert ring color available: Yellow, Red, White, Black, Blue, Green, Orange
- Center pin: Brass, Tin plated
- Bracket: C,R,S, Tin plated
- Barrel: C,R,S, Tin plated

- Electrical:
 - Contact resistance: 30 mohms max.
 - Insulation resistance: 100 Mohms min
 - Dielectric withstanding voltage: 500 VAC for 1 minute
 - Temperature rating:
 - Operating temperature: -25°C to +80°C
- Environmental:
 - Lead free, RoHS compliant.
 - Recommended soldering temp: 235°C for 5 sec



ADAM TECH

909 Railway Avenue, Union, NJ 07083
 Phone: 908-687-5000 Fax: 908-687-5710

TITLE: RCA JACK, RIGHT ANGLE, 1 PORT
 PCB MOUNT

UNLESS OTHERWISE SPECIFIED ALL DIMENSIONS ARE INCHES [MM]	
TOLERANCES: EXCEPT AS NOTED	
INCHES	HOLDS
.X ± .10	ØX ± .10
.XX ± .020	ØXX ± .015
.XXX ± .015	ØXXX ± .010
APPROVALS	DATE
DRAWN	DY
CHECKED	7/20/10
APPROVED	

SIZE	PART NO.	REV.
X	RCA-27-1-X	
REF: S00095T	SCALE: NTS	SHEET 1 OF 1