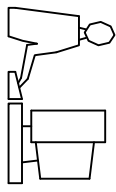
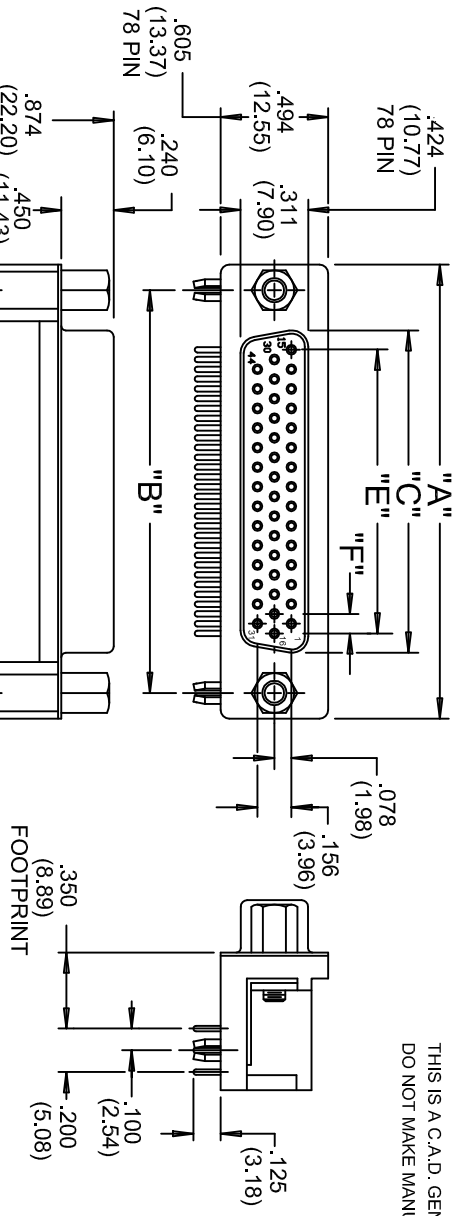


THIS IS A C.A.D. GENERATED DRAWING
DO NOT MAKE MANUAL REVISIONS TO MASTER.

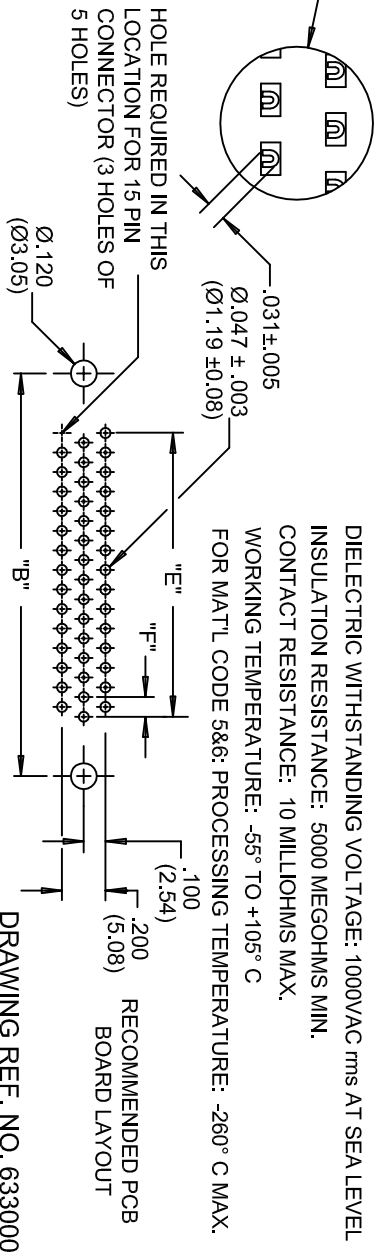


ISSUE NUMBER
ADD PCB LAYOUT
R.STAMONICA MAY 24/2011
(12)



MATERIALS:
 INSULATOR: THERMOPLASTIC POLYESTER, UL94V-0
 CHEMICAL RESISTANCE, COLOR BLACK
 SHELL: STEEL, NICKEL PLATED
 CONTACT: SEE ORDERING CODE
 GOLD FLASH (CONTACT CODE 263)
 10 MICRONS GOLD (CONTACT CODE 563)
 30 MICRONS GOLD (CONTACT CODE 663)
 TIN PLATING ON TAIL ENDS

ELECTRICAL:
 CURRENT RATING: 3 AMPERES
 DIELECTRIC WITHSTANDING VOLTAGE: 1000VAC rms AT SEA LEVEL
 INSULATION RESISTANCE: 5000 MEGOHMS MIN.
 CONTACT RESISTANCE: 10 MILLIOHMS MAX.
 WORKING TEMPERATURE: -55° TO +105° C
 FOR MATL CODE 5&6: PROCESSING TEMPERATURE: -260° C MAX.



ORDERING CODE

- SERIES **634-015-563-042**
- NUMBER OF CONTACTS _____
- CONTACT FINISH CODE _____
- CONNECTOR CODE _____
- 63- STANDARD CONTACTS, BLACK INSULATOR
 73- 9TH PIN RECESSED .050(3.05) BLACK INSULATOR
 74- 9TH PIN RECESSED .050(3.05) BLUE INSULATOR
- CONNECTOR MATERIAL CODE: _____
- 0- PHOSPHOR BRONZE
 1- BRASS
 5- PHOSPHOR BRONZE, HIGH TEMP INSULATOR
 6- BRASS, HIGH TEMP INSULATOR
- GROUNDING FEATURE _____
- 1- 120(3.05) DIA. THROUGH HOLE TOP GROUND
 2- 120(3.05) DIA. THROUGH HOLE BOTTOM GROUND
 3- TWO PRONG BOARDLOCKS FOR .120(3.05)DIA.HOLE
 4- FOUR PRONG BOARDLOCKS FOR .120(3.05)DIA.HOLE
- MOUNTING OPTIONAL _____
- 0- FIXED ROUND STANDOFF WITH THREADED INSERT
 1- .125" DIA. THROUGH HOLE
 2- 4-40 UNC THREADED INSERT
 3- 4-40 UNC THREADED HEX STANDOFF

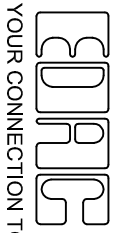
NUMBER OF CONTACTS	"A" Inch (mm)	"B" Inch (mm)	"C" Inch (mm)	"E" Inch (mm)	"F" Inch (mm)
15	1.214 (30.84)	.984 (24.99)	.642 (16.30)	.405 (10.29)	.090 (2.29)
26	1.545 (39.24)	1.312 (33.32)	.971 (24.66)	.765 (19.43)	.090 (2.29)
44	2.088 (53.04)	1.852 (47.04)	1.511 (38.38)	1.305 (33.15)	.090 (2.29)
62	2.730 (69.34)	2.500 (63.50)	2.159 (54.84)	1.948 (49.47)	.095 (2.41)
78	2.635 (66.93)	2.406 (61.11)	2.064 (52.42)	1.805 (45.85)	.095 (2.41)

634 SERIES HIGH DENSITY SUBMINIATURE D CONNECTOR RECEPTACLE(SOCKET) RIGHT ANGLE .350(8.89) FOOTPRINT

DRAWN: F.BRIONES DATE: NOV. 26/97
 CHECKED: DATE:
 PART NUMBER
 SEE ORDERING CODE



THIS SERIES FULLY CONFORMS TO THE EUROPEAN UNION DIRECTIVES 2002/95/EC AND 2002/96/EC FOR ROHS COMPLIANCY.



EDAC INC
 TORONTO, ONTARIO
 CANADA
 YOUR CONNECTION TO QUALITY & SERVICE

THESE DRAWINGS AND SPECIFICATIONS ARE THE PROPERTY OF EDAC INC. AND SHALL NOT BE REPRODUCED OR COPIED OR USED AS THE BASIS FOR THE MANUFACTURE OR SALE OF APPARATUS WITHOUT WRITTEN PERMISSION.

DRAWING NUMBER
634-000-001
 ISSUE
 12

Mouser Electronics

Authorized Distributor

Click to View Pricing, Inventory, Delivery & Lifecycle Information:

[EDAC:](#)

[634-015-263-032](#)