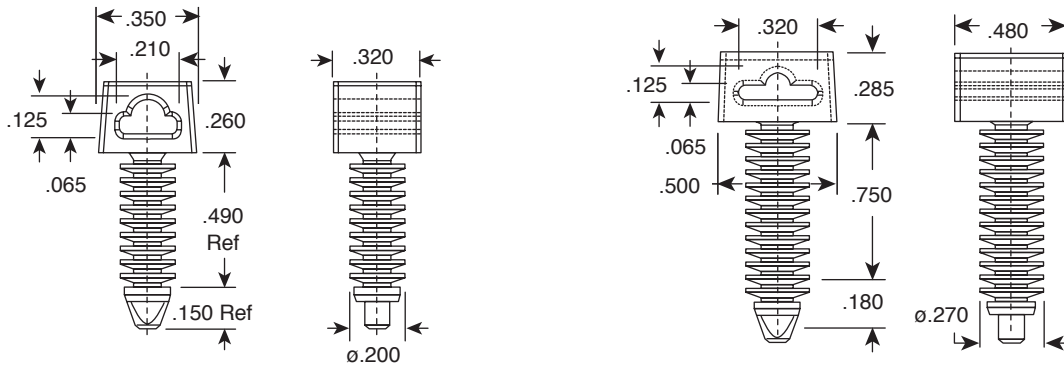


Dimensions: in.



561-PM18765

561-PM25095

Fin Clip Push Mounts are available in 2 sizes for 3/16" and 1/4" diameter holes. The special head configuration allows use with beaded ties, as well as conventional cable ties. Parts are molded in black U.V. stabilized high density polyethylene, and are suitable for use in pre-drilled holes in wood, masonry, and a variety of other materials.

Part Number	Size
561-PM18765	3/16"
561-PM25095	1/4"

# Mouser Electronics

Authorized Distributor

Click to View Pricing, Inventory, Delivery & Lifecycle Information:

[Eagle Plastic Devices:](#)

[561-PM25095](#) [561-PM18765](#)