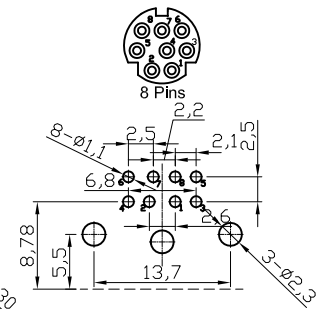
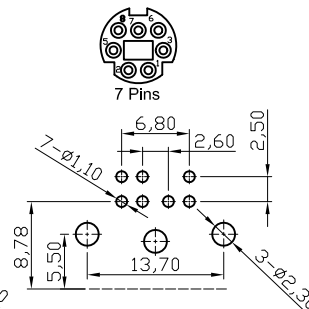
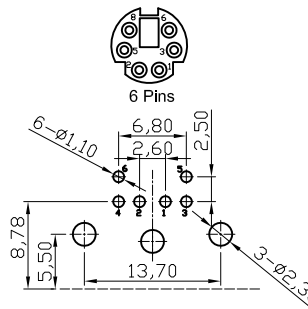
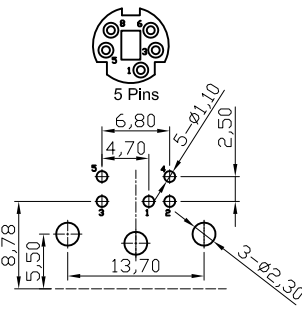
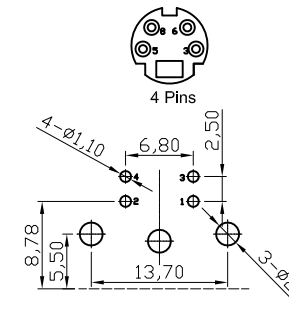
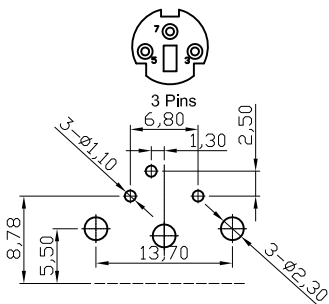


- 1.Material:
 Contacts :Brass
 Insulator :PBT+30% G.F. UL 94V-0;Black
 Shell :Brass
- 2.Mechanical:
 Mating Force: 45N max.
 Withdrawal Force: 7N min.
 Durability: 500 cycles min.
- 3.Electrical:
 Current-max[amps] 1.0A
 Voltage-max[volts] 30V
 Withstanding Voltage 750V AC
 Contact Resistance [ohms] 30 milliohms max
 Insulation Resistance [ohms] 1000 Megohms min
- 4.Plating:
 Contacts:Gold Flash Selective over Nickel
 Shell: Nickel
- 5.Environmental
 Temperature Range -55°C~+85°C
- Order Code:

A-DIO-FSxx
 Shielded No. of Contacts
 03 / 04 / 05 / 06 / 07 / 08



RECOMMENDED P.C.B. PATTERN LAYOUT
 TOP VIEW (TOLERANCE: ±0,05)

RECOMMENDED P.C.B. PATTERN LAYOUT
 TOP VIEW (TOLERANCE: ±0,05)

RECOMMENDED P.C.B. PATTERN LAYOUT
 TOP VIEW (TOLERANCE: ±0,05)

RECOMMENDED P.C.B. PATTERN LAYOUT
 TOP VIEW (TOLERANCE: ±0,05)

RECOMMENDED P.C.B. PATTERN LAYOUT
 TOP VIEW (TOLERANCE: ±0,05)

RECOMMENDED P.C.B. PATTERN LAYOUT
 TOP VIEW (TOLERANCE: ±0,05)

RoHS compliant

Unit:mm

Scale	Free						Date	Name	Customer-No.	
TOLERANCE						Drawn	19.03.2004	Helwig		
X.X	±0.38									
X.XX	±0.25	④	Update	31.07.2012	Lucas	Approved	31.07.2012	Winnie	ASSMANN WSW-No.	
X.XXX	±0.15	③	Change the manufacture plant	25.11.2010	Alex				A-DIO-FSxx	
DIM	TOL								Drawing-No.	
X.°	±1°	②	Update	15.07.2009	Rale				ASS 1622 CO	
X.X°	±X°	①	Drawn	19.03.2004	Hellwig					rev04
Angle	TOL	Id.	Modification	Date	Name				Replace	Sheet



1

2

3

4

5

6

7