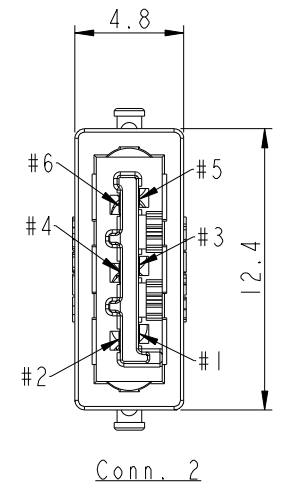
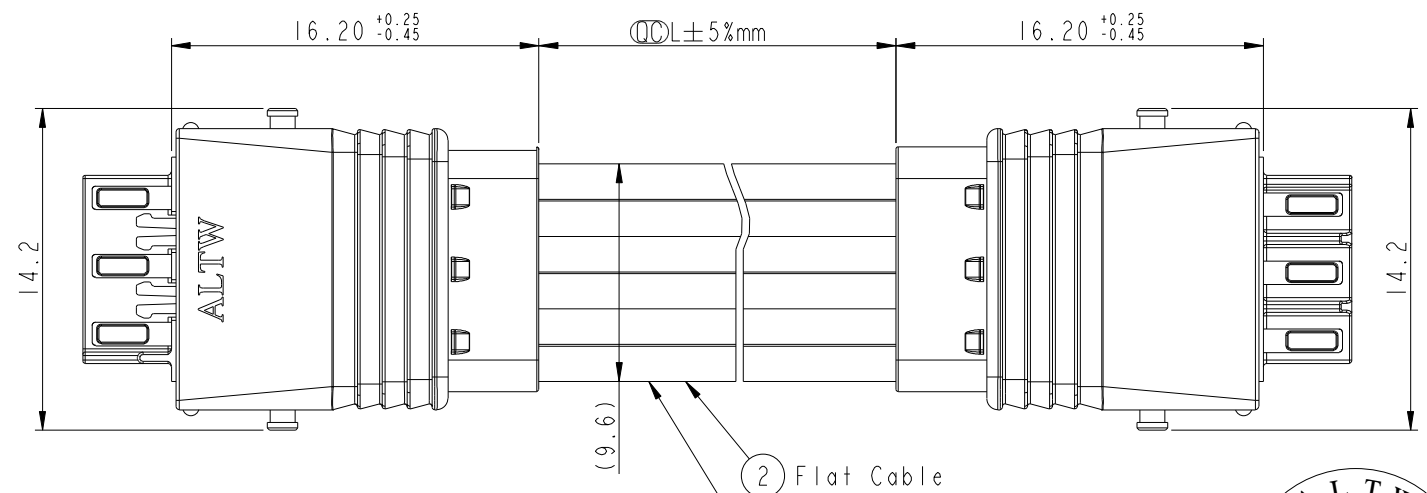
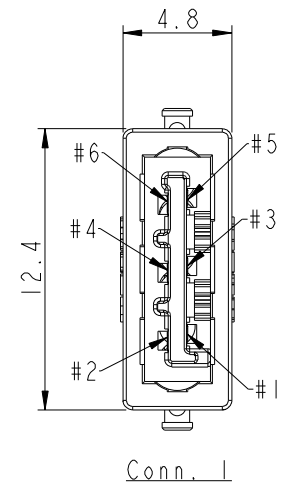
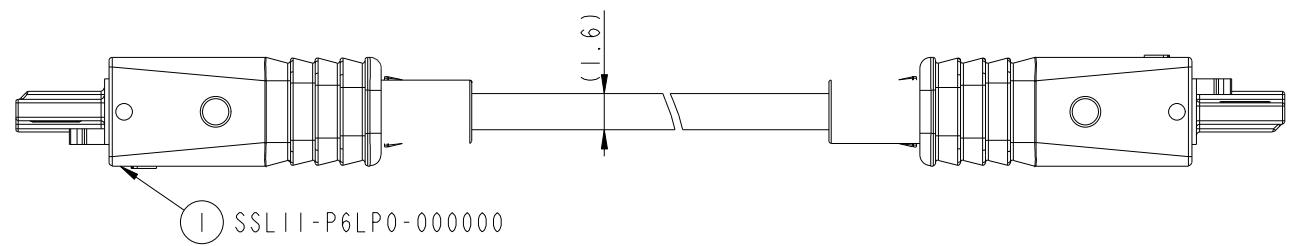
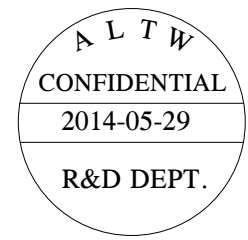


REV.	ECN NO.	DATE	SIGN	DESCRIPTION
A	Initial Release	2014-05-29	Fisher	Initial Release



6	White	白	6
5	White	白	5
4	White	白	4
3	White	白	3
2	White	白	2
1	Blue	藍	1
Conn. 1	Wire Color		Conn. 2
Pin Out			

SSL11-P6L2P-022DXX  
 06: L=600mm.  
 Cable Length Range  
 (L): 100~9900 mm  
 22: 22AWG  
 LOCK&LATCH OPTION  
 0: W/O LOCK



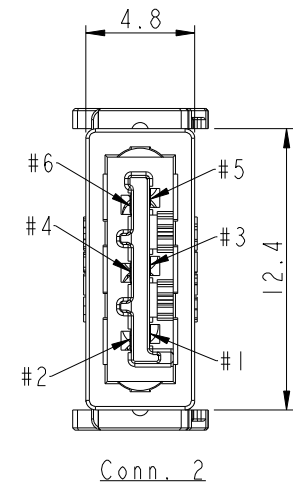
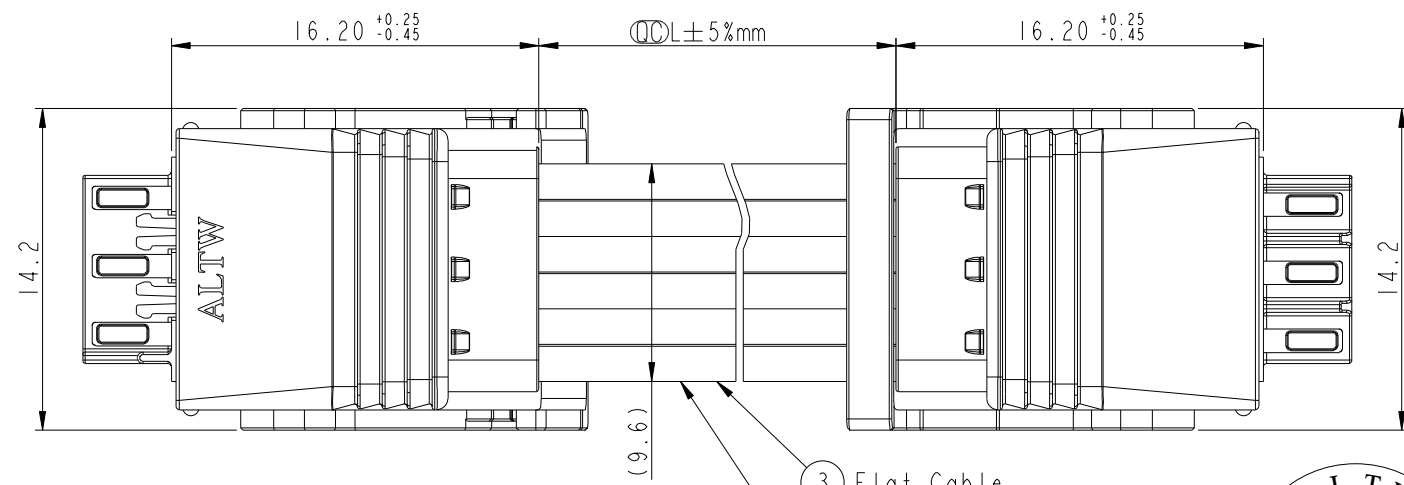
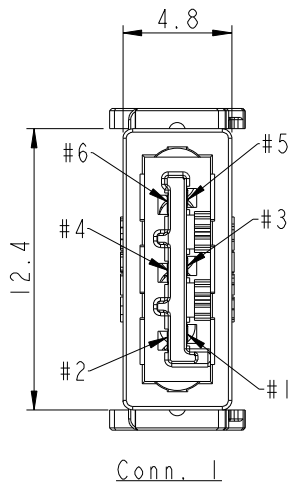
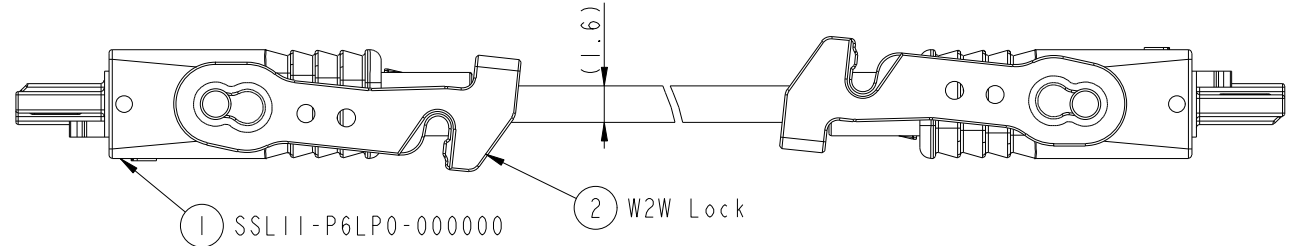
- Notes:
- \*  $\varnothing$  Important Dimensions To Check.
  - \* Housing: Thermoplastic, UL94V-0, Natural White.
  - \* Terminal: Copper Alloy, Gold Plated.
  - \* Hood: Thermoplastic, UL94V-0, Natural White.
  - \* SR Mold: PP, UL94V-0, Natural White.
  - \* Flat Cable: UL21016, 6F \* 22AWG, XLPE Insulation, White

UNIT:mm		TITLE		ITEM NO		DRAWN BY		DATE	
		SSL1.1 Flat Cable, 6-Pos. W/O Lock, Plug to Plug		SSL11-P6L2P-022DXX		Fisher_Wang		2014-05-29	
		SCALE	SIZE	SHEET	OF	CHECKED BY	DATE		
TOLERANCE .X ±0.25 .XX ±0.1 .XXX ±0.05 ANGLES ±1°		3:1	A4	1	1	Ivan_Lin	2014-05-29		
		REV.	WC-REV.	$\varnothing$ : Inspection item		APPROVED BY		DATE	
		A	A.2			Kevin_Hu		2014-05-29	
				<b>Amphenol LTW</b> 安費諾亮泰企業股份有限公司		CUSTOMER		DATE	
				ALTW				2014-05-29	

THIS DOCUMENT IS SUBJECT TO CHANGE WITHOUT NOTICE. IT IS CONFIDENTIAL AND A PROPERTY OF Amphenol LTW. DISCLOSURE TO THIRD PARTY HAS TO BE AUTHORIZED BY Amphenol LTW.

THIS DOCUMENT IS SUBJECT TO CHANGE WITHOUT NOTICE. IT IS CONFIDENTIAL AND A PROPERTY OF Amphenol LTW. DISCLOSURE TO THIRD PARTY HAS TO BE AUTHORIZED BY Amphenol LTW.

REV.	ECN NO.	DATE	SIGN	DESCRIPTION
A	Initial Release	2014-05-29	Fisher	Initial Release



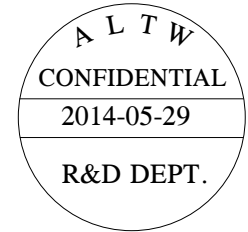
6	White	白	6
5	White	白	5
4	White	白	4
3	White	白	3
2	White	白	2
1	Blue	藍	1
Conn. 1	Wire Color	Conn. 2	
Pin Out			

SSLII-P6L2P-T22DXX

06: L=600mm.  
Cable Length Range  
(L): 100~9900 mm

22: 22AWG

LOCK&LATCH OPTION  
T: W2W LOCK X 2



- Notes:
- \*  $\varnothing$  Important Dimensions To Check.
  - \* Housing: Thermoplastic, UL94V-0, Natural White.
  - \* Terminal: Copper Alloy, Gold Plated.
  - \* Hood: Thermoplastic, UL94V-0, Natural White.
  - \* SR Mold: PP, UL94V-0, Natural White.
  - \* W2W Lock: Thermoplastic, UL94V-0, Natural White.
  - \* Flat Cable: UL21016, 6F \* 22AWG, XLPE Insulation, White

<b>UNIT:mm</b> TOLERANCE .X ±0.25 .XX ±0.1 .XXX ±0.05 ANGLES ±1°	TITLE SSLI.1 Flat Cable, 6-Pos. W2W Lock X 2, Plug to Plug		<h1>Amphenol LTW</h1> <h2>安費諾亮泰企業股份有限公司</h2>		ITEM NO SSLII-P6L2P-T22DXX	DRAWN BY Fisher_Wang	DATE 2014-05-29	
	SCALE 3:1	SIZE A4	SHEET 1 OF 1	CUSTOMER ALTW	CHECKED BY Ivan_Lin	DATE 2014-05-29	APPROVED BY Kevin_Hu	DATE 2014-05-29
	REV. A	WC-REV. A.3	QC: Inspection item					