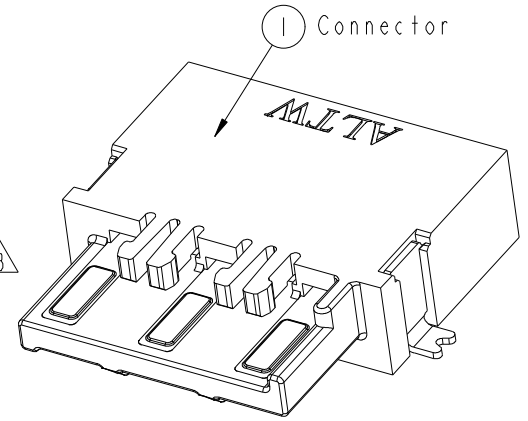
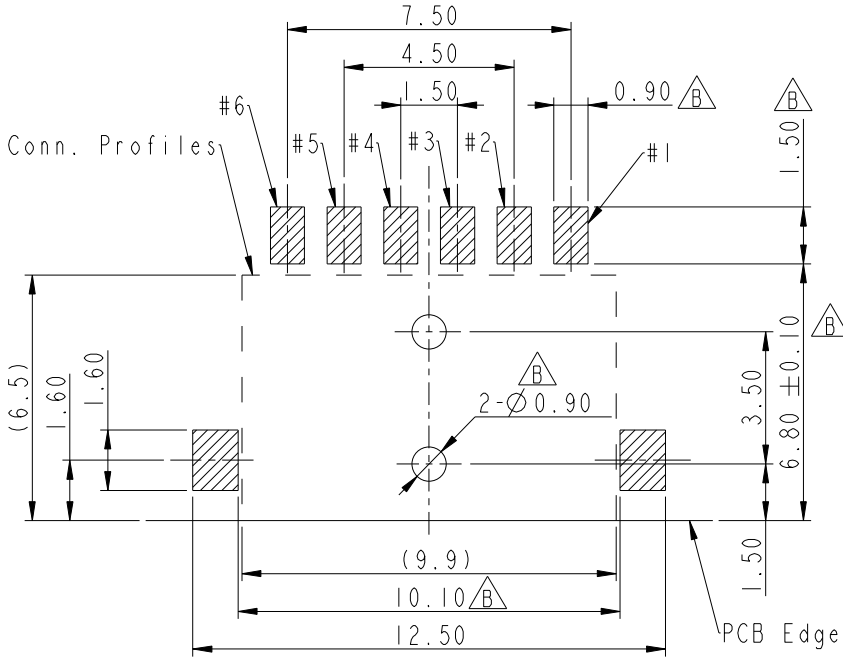
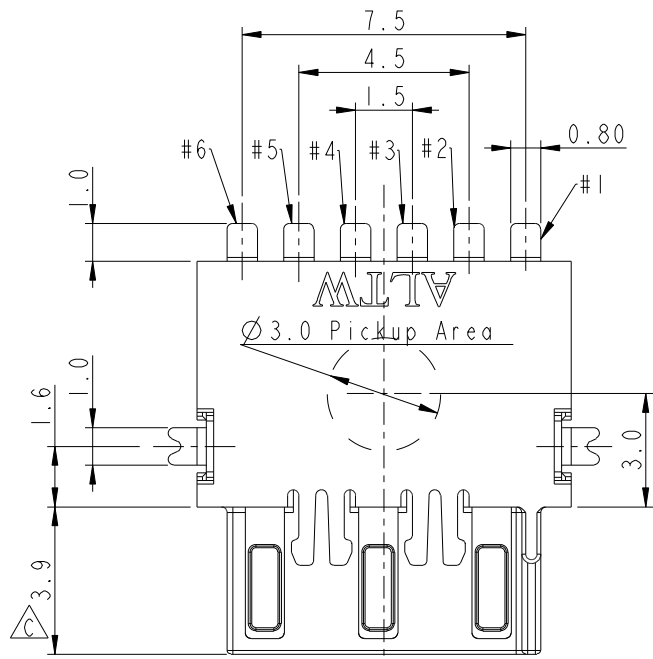
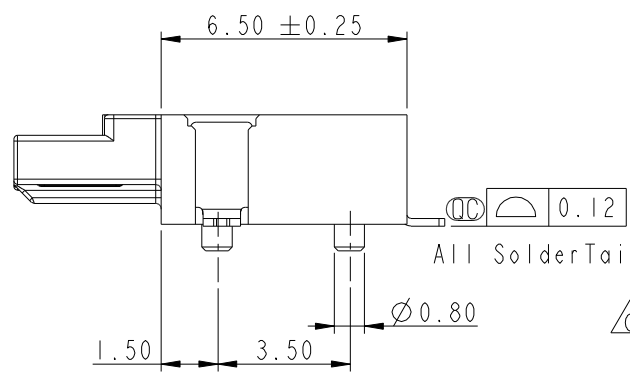
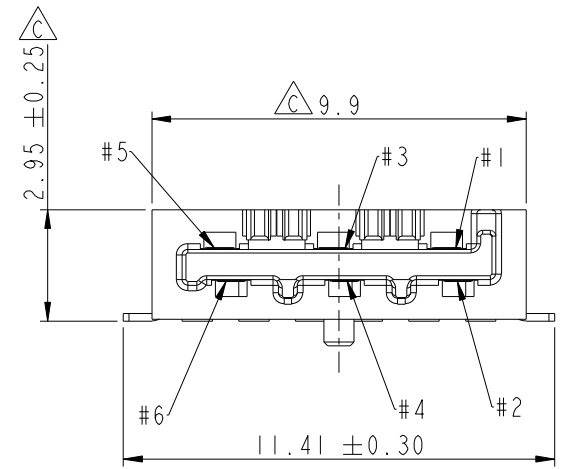
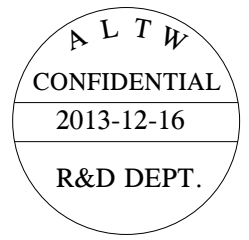


THIS DOCUMENT IS SUBJECT TO CHANGE WITHOUT NOTICE. IT IS CONFIDENTIAL AND A PROPERTY OF Amphenol LTW. DISCLOSURE TO THIRD PARTY HAS TO BE AUTHORIZED BY Amphenol LTW.

REV.	ECN NO.	DATE	SIGN	DESCRIPTION
A	Initial Release	2012-12-06	Fisher	Initial Release
B	LEN1310202	2013-02-20	Fisher	Change Plating and PCB Layout
C	LE313C0102	2013-12-16	Fisher	Change Plating and Package



RECOMMENDED P.C.B. LAYOUT
GENERAL TOLERANCE IS ±0.05



- Notes:
- * Important Dimension To Check.
 - * Housing: High temperature thermoplastic. UL94V-0, color is Natural white.
 - * Terminal: Copper Alloy, Gold Plated on contact area. Tin plated on solder tails.
 - * Solder Peg: Copper Alloy, Tin plated over Nickel.

UNIT: mm

TOLERANCE	
.X	±0.25
.XX	±0.1
.XXX	±0.05
ANGLES	±1°

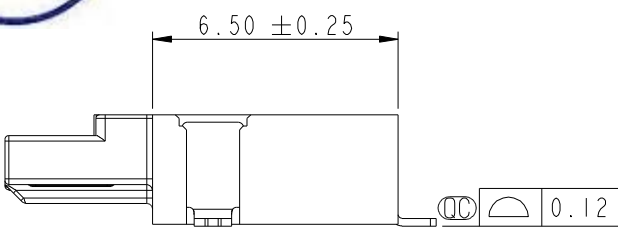
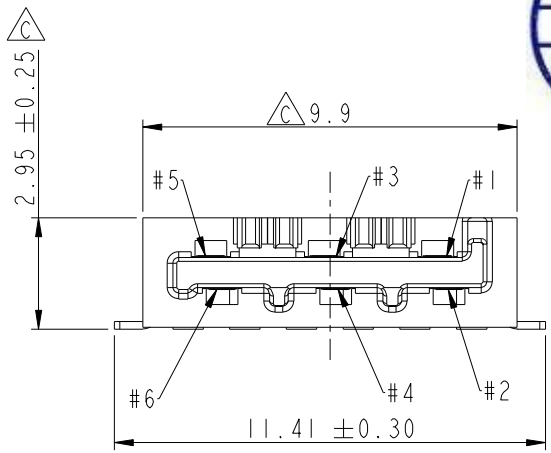
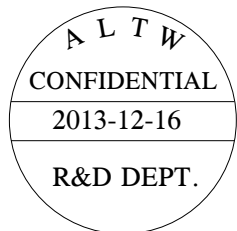
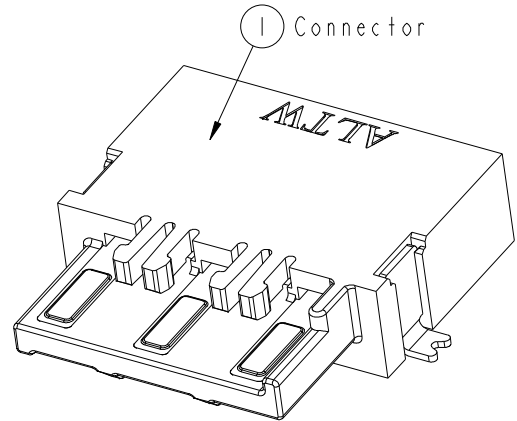
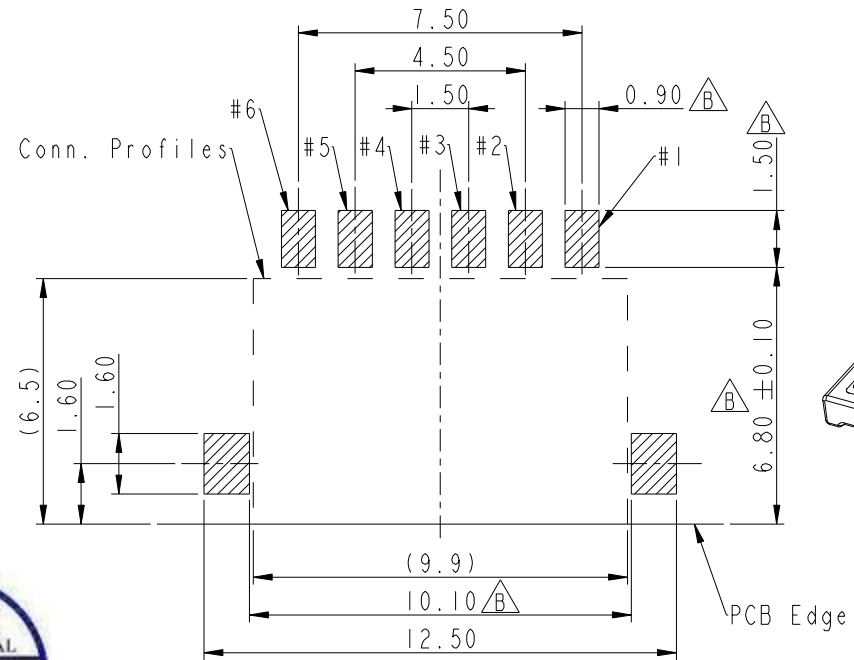
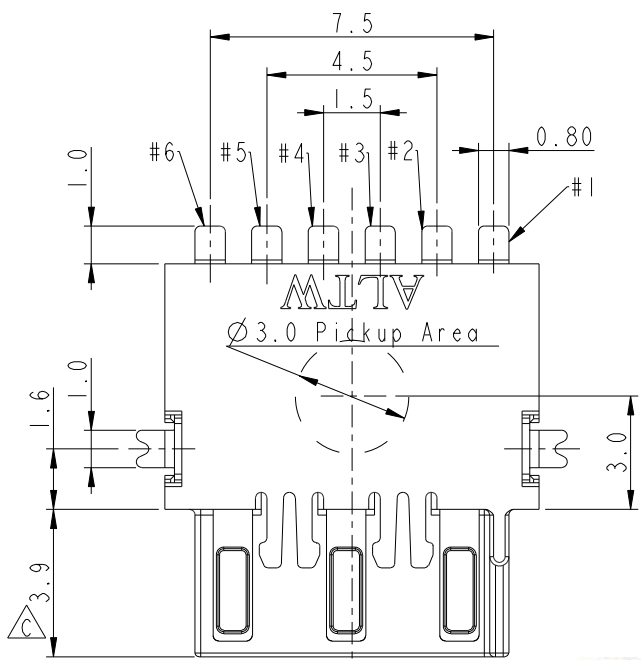
TITLE SSL-1.1 DC PLUG CONNECTOR 6-POS. WITH POST, SMT TYPE			
SCALE	SIZE	SHEET	OF
5:1	A4	1	2
REV.	WC-REV.	Inspection item	
C	C.2		

Amphenol LTW
安費諾亮泰企業股份有限公司

ITEM NO.	DRAWN BY	DATE
SSL11-P6C00-000001	Fisher_Wang	2013-12-16
DWG NO.	CHECKED BY	DATE
SSL11-P6C00-000001	Ivan_Lin	2013-12-16
CUSTOMER	APPROVED BY	DATE
ALTW	Kevin_Hu	2013-12-16

THIS DOCUMENT IS SUBJECT TO CHANGE WITHOUT NOTICE. IT IS CONFIDENTIAL AND A PROPERTY OF Amphenol LTW. DISCLOSURE TO THIRD PARTY HAS TO BE AUTHORIZED BY Amphenol LTW.

REV.	ECN NO.	DATE	SIGN	DESCRIPTION
A		2012-12-05	Fisher	Initial Release
B	LEN1310203	2013-01-14	Fisher	Change Plating and PCB Layout
C	LE313C0103	2013-12-16	Fisher	Change Plating and Package



- Notes:
- * CC Important Dimension To Check.
 - * Housing: High temperature thermoplastic. UL94V-0, color is Natural white.
 - * Terminal: Copper Alloy, Gold Plated on contact area. Tin plated on solder tails.
 - * Solder Peg: Copper Alloy, Tin plated over Nickel.

UNIT: mm

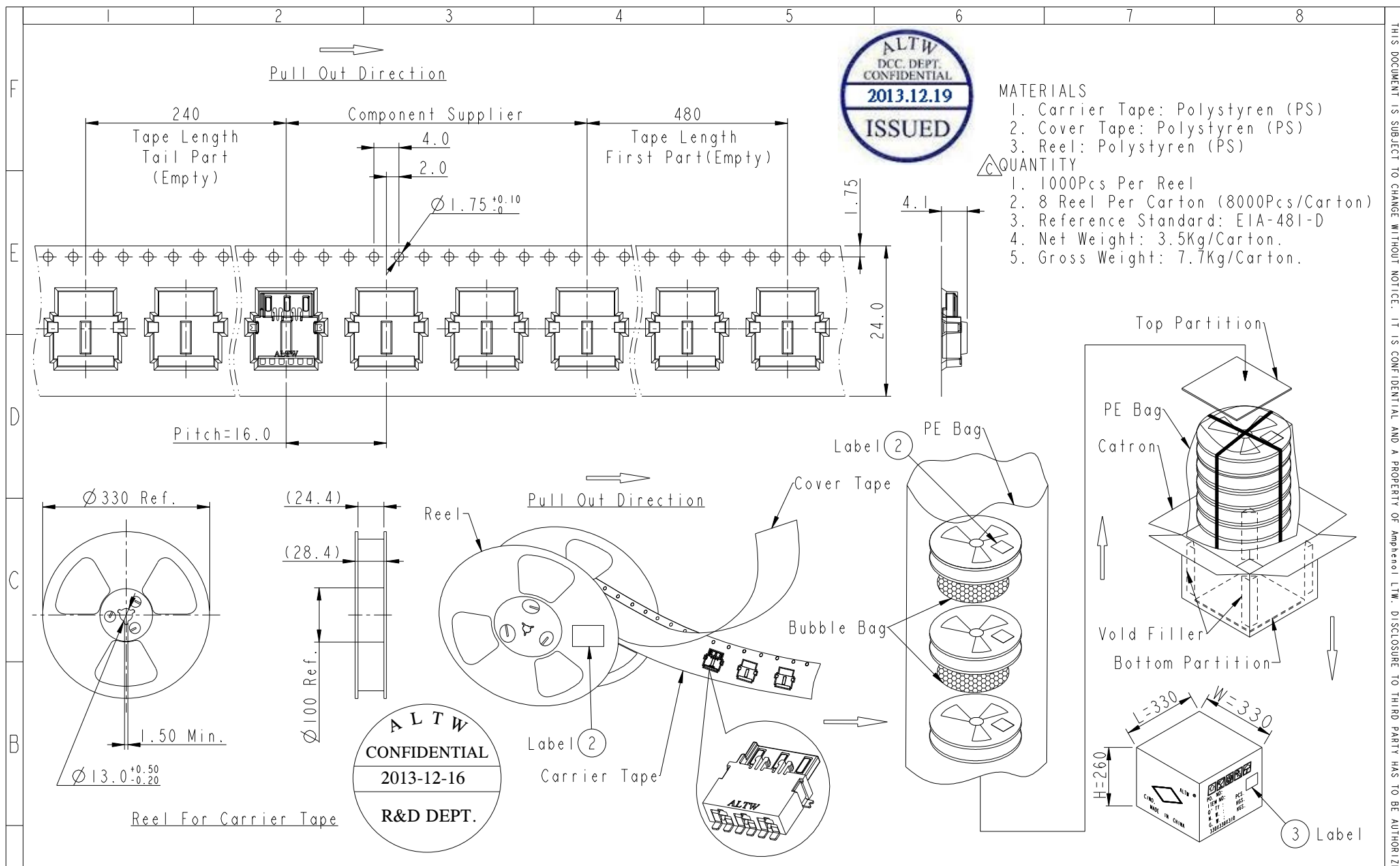
TOLERANCE	
.X	± 0.25
.XX	± 0.1
.XXX	± 0.05
ANGLES	± 1°

TITLE SSL-1.1 DC PLUG CONNECTOR 6-POS. W/O POST, SMT TYPE			
SCALE	SIZE	SHEET	OF
5:1	A4	1	2
REV.	WC-REV.	CC : Inspection item	
C	C.2		

Amphenol LTW
安費諾亮泰企業股份有限公司

ITEM NO	SSLI1-P6D00-000001	DRAWN BY	Fisher_Wang	DATE	2013-12-16
DWG NO	SSLI1-P6D00-000001	CHECKED BY	Ivan_Lin	DATE	2013-12-16
CUSTOMER	ALTW	APPROVED BY	Kevin_Hu	DATE	2013-12-16

THIS DOCUMENT IS SUBJECT TO CHANGE WITHOUT NOTICE. IT IS CONFIDENTIAL AND A PROPERTY OF Amphenol LTW. DISCLOSURE TO THIRD PARTY HAS TO BE AUTHORIZED BY Amphenol LTW.



MATERIALS

1. Carrier Tape: Polystyren (PS)
 2. Cover Tape: Polystyren (PS)
 3. Reel: Polystyren (PS)
- QUANTITY**
1. 1000Pcs Per Reel
 2. 8 Reel Per Carton (8000Pcs/Carton)
 3. Reference Standard: EIA-481-D
 4. Net Weight: 3.5Kg/Carton.
 5. Gross Weight: 7.7Kg/Carton.

ALTW
 CONFIDENTIAL
 2013-12-16
 R&D DEPT.

UNIT:mm

TOLERANCE	.X	±0.25
	.XX	±0.1
	.XXX	±0.05
	ANGLES	±1°

TITLE SSL-1.1 DC PLUG CONNECTOR 6-POS. W/O POST, SMT TYPE			
SCALE	5:1	SIZE	A4
REV.	C	WC-REV.	A.5
SHEET		2 OF 2	
QC: Inspection item			

Amphenol LTW
 安費諾亮泰企業股份有限公司

ITEM NO	SSL11-P6D00-000001	DRAWN BY	Fisher_Wang	DATE	2013-12-16
DWG NO	SSL11-P6D00-000001	CHECKED BY	Ivan_Lin	DATE	2013-12-16
CUSTOMER	ALTW	APPROVED BY	Kevin_Hu	DATE	2013-12-16

A

F

E

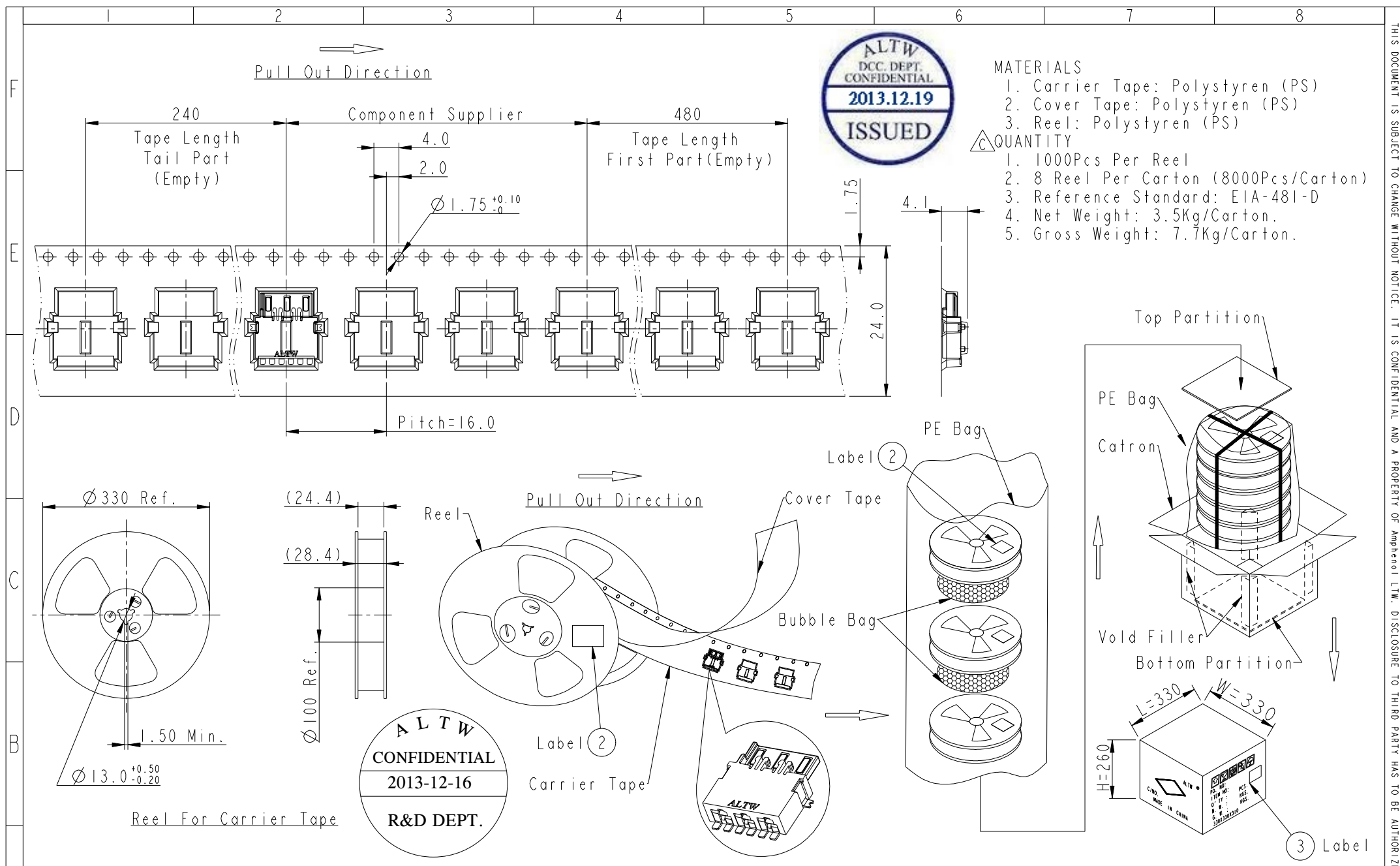
D

C

B

A

THIS DOCUMENT IS SUBJECT TO CHANGE WITHOUT NOTICE. IT IS CONFIDENTIAL AND A PROPERTY OF Amphenol LTW. DISCLOSURE TO THIRD PARTY HAS TO BE AUTHORIZED BY Amphenol LTW.



- MATERIALS**
1. Carrier Tape: Polystyren (PS)
 2. Cover Tape: Polystyren (PS)
 3. Reel: Polystyren (PS)
- QUANTITY**
1. 1000Pcs Per Reel
 2. 8 Reel Per Carton (8000Pcs/Carton)
 3. Reference Standard: EIA-481-D
 4. Net Weight: 3.5Kg/Carton.
 5. Gross Weight: 7.7Kg/Carton.

UNIT:mm TOLERANCE .X ±0.25 .XX ±0.1 .XXX ±0.05 ANGLES ±1°		TITLE SSL-1.1 DC PLUG CONNECTOR 6-POS. WITH POST, SMT TYPE		Amphenol LTW 安費諾亮泰企業股份有限公司	ITEM NO SSL11-P6C00-000001	DRAWN BY Fisher_Wang	DATE 2013-12-16
		SCALE 5:1	SIZE A4		SHEET 2 OF 2	DWG NO SSL11-P6C00-000001	CHECKED BY Ivan_Lin
REV. C	WC-REV. A.5	Inspection item	CUSTOMER ALTW	APPROVED BY Kevin_Hu	DATE 2013-12-16		