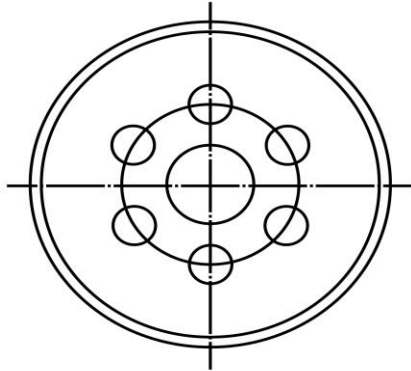
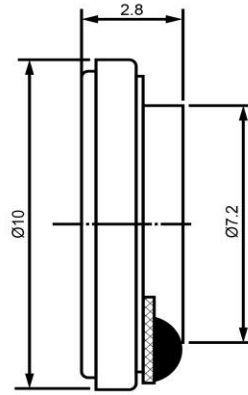


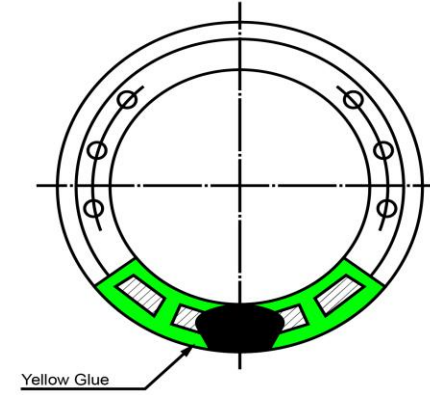
TOP VIEW



SIDE VIEW



BOTTOM VIEW



Specifications

| Description | Value | Unit |
|-----------------------|---------------|-------|
| Shape | Round | |
| Resonant Frequency | 1,200 | (Hz) |
| Frequency Range | 1,200 ~ 6,000 | (Hz) |
| SPL @ 10cm | 82 | (dBA) |
| Impedance | 8 | (Ohm) |
| Cone Material | Mylar | |
| Nominal Power | 0.15 | (W) |
| Max Power | 0.3 | (W) |
| Mount Type | Flush Mount | |
| Operating Temperature | -20 ~ +60 | °C |
| Storage Temperature | -20 ~ +60 | °C |
| Weight | 0.8 | (g) |

Notes

- 1) All dimensions are in mm unless otherwise noted
- 2) All parts meet RoHS



Revision History

| Version | Description | Date | Approved | | |
|----------|---------------------------|------------|----------|-------------|----------|
| 1 | Released from Engineering | 2/5/2014 | J.S. | | |
| | | | | | |
| | | | | | |
| | | | | | |
| | | | | | |
| | | | | | |
| | | | | | |
| | | | | | |
| | | | | | |
| | | | | | |
| | | | | | |
| Drawn by | Date | Checked by | Date | Approved by | Date |
| G.W. | 1/27/2014 | C.E. | 2/4/2014 | J.S. | 2/5/2014 |

DB UNLIMITED

Dynamic Speaker

SM101208-1