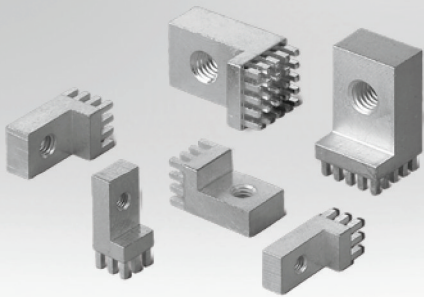


Power Elements 90°

with full plain Pin-Plate



Characteristics

- Prepared hole diameter: 1.60 mm
- Final hole diameter for HAL surface: 1.45 mm ±0.05 mm
- Final diameter for chemical surfaces (e.g. tin): 1.475 mm ±0.05 mm
- Not suitable for soldering
- Available with hole or threads

Dimensions (mm)

Power Elements									
Order Code	Four corners a (mm)	b (mm)	c (mm)	d (mm)	e	f	g	Pins	Format Type
746 106 6	7	17.5	3.5	4	M 3	3	5	9	I
746 111 0	7	17.5	3.5	4	Ø 3.2	3	5	9	I
746 111 1	9	17.5	3.5	5	M 4	3	5	16	J
746 106 7	9	17.5	3.5	5	Ø 4.2	3	5	16	J
746 111 2	9	17.5	3.5	5	M 5	3	5	16	J
746 111 3	9	17.5	3.5	5	Ø 5.2	3	5	16	J
746 111 4	13	23.5	3.5	8	M 6	3	8	25	K
746 111 5	13	23.5	3.5	8	Ø 6.2	3	8	25	K
746 106 8	13	23.5	3.5	8	M 8	3	8	25	K
746 111 6	13	23.5	3.5	8	Ø 8.2	3	8	25	K
746 111 7	16	28.5	3.5	10	M 10	3	10	36	L
746 106 9	16	28.5	3.5	10	Ø 10.2	3	10	36	L

Dimensions

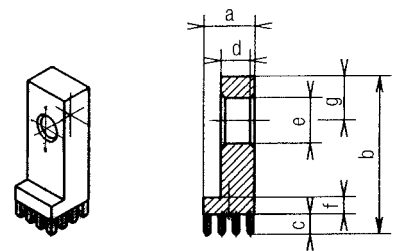


Illustration of hole I

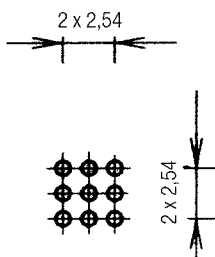


Illustration of hole J

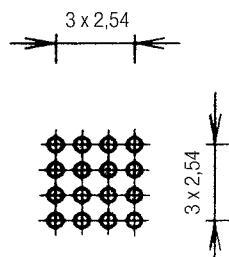


Illustration of hole K

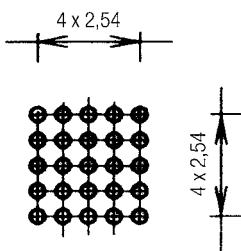


Illustration of hole L

