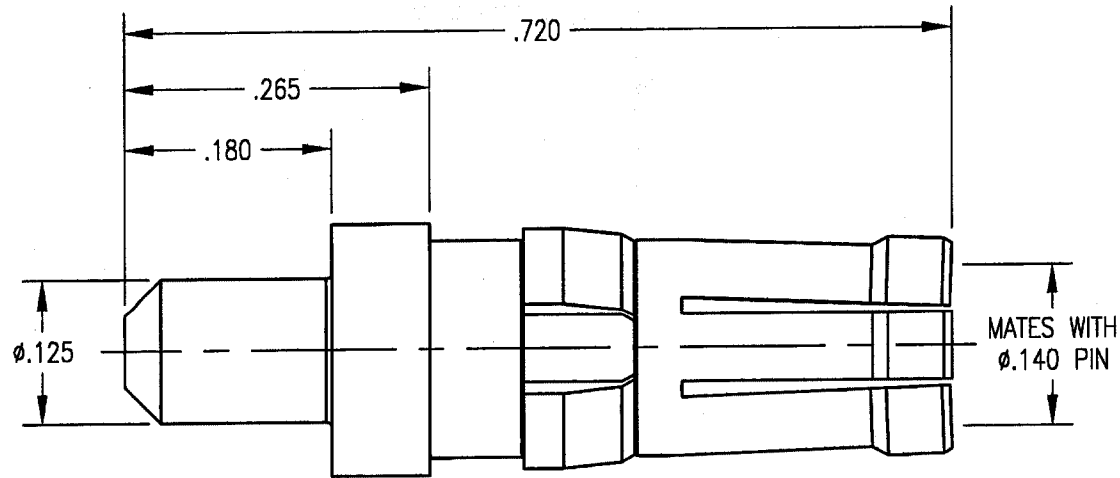


DWG. NO.		221-010-0041G	
REV	DESCRIPTION	BY	APPD
A	ECN 2360	OC/ATZ	JMC



NOTES:

1. MATERIALS:

BODY: BERYLLIUM COPPER PER ASTM B196  
 CLIP RING: BERYLLIUM COPPER PER ASTM B194

2. FINISH:

BODY: .000030 MIN. GOLD PER MIL-G-45204 OVER  
 .000050 MIN. NICKEL PER QQ-N-290  
 CLIP RING: .000100 MIN. NICKEL PER QQ-N-290 OVER  
 COPPER FLASH

PER ASME Y14.5M-1994 UNLESS OTHERWISE SPECIFIED: DIMENSIONS ARE IN INCHES (MM)				<b>Litton</b>			
TOLERANCES: DECIMALS .XX ± .01/0.254 XXX ± .005/0.127 ANGLES ± 2° SCALE: 6:1				Winchester/Retconn 400 Park Road Waterbury, Connecticut 04785			
<b>CUSTOMER DRAWING</b>				TITLE			
DRAWN KJT			DATE 7/15/97	CHECKED JMC		DATE 7/15/97	
APPROVED AT			DATE 7/15/97	APPROVED AT		DATE 7/15/97	
A				221-010-0041G		SHT. OF 1 1	
						REV. A	