

# RF DISTRIBUTOR



## R35040-XE SERIES



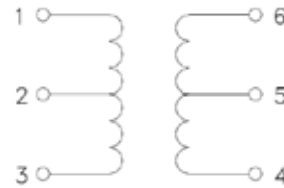
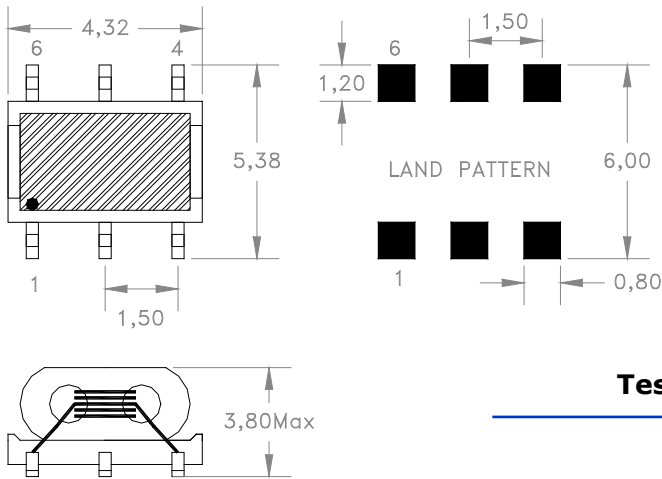
- Ideal for use in Wideband Transformer applications
- Bandwidth available from 20MHz to 1000MHz
- Operating Temperature: -40°C to +85°C
- RoHS Compliant Product
- Custom Design Available

### ELECTRICAL SPECIFICATION @ 25°C

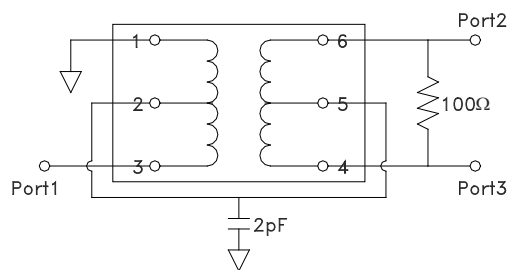
Part No R35040-	Winding Turns			μiac
	1-2	2-3	4-5=5-6	
1E	1T	3T	2T	125
2E	1T	4T	3T	125

### Mechanical

### Schematic



### Test Circuit (50W Network System)



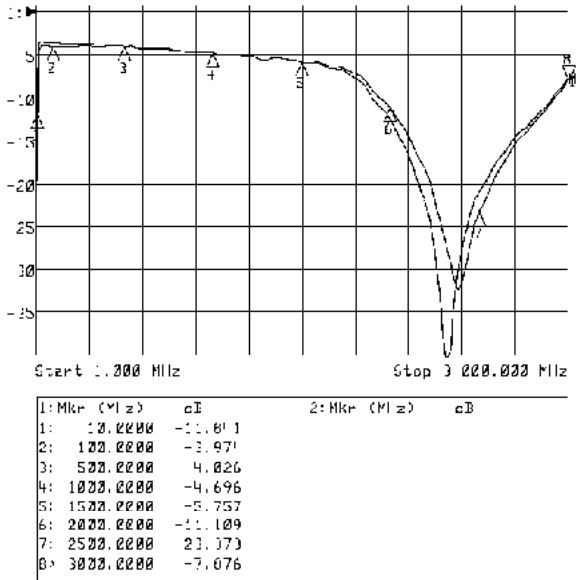
#### TOLERANCE

Unless otherwise specified  
 inch: .XX : ± 0.015 .XXX : ±0.004  
 mm: X,X : ± 0,38 X,XX : ±0,10

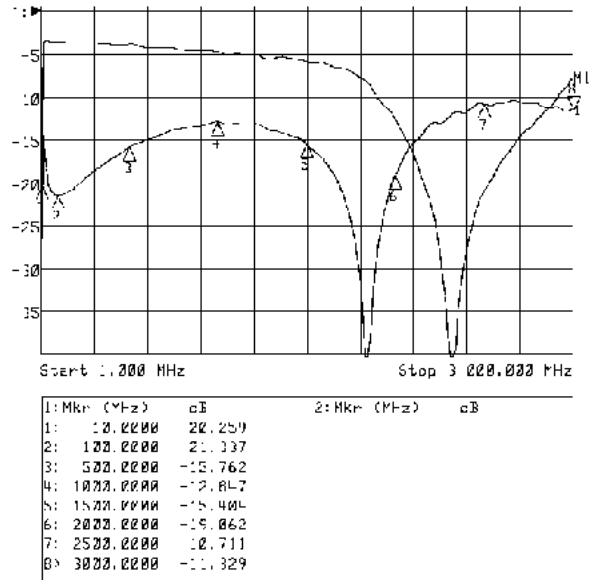
Product performance is limited to specified parameter. Data is subject to change without prior notice.

R35040-XE  
0945JW

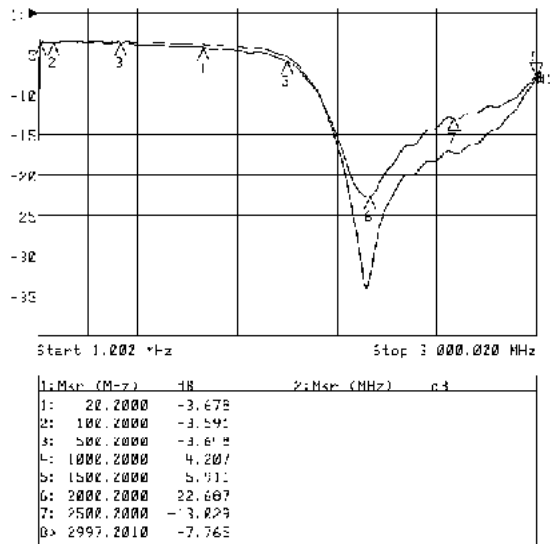
### R35040-1E: Port1 to Port2 and Port3



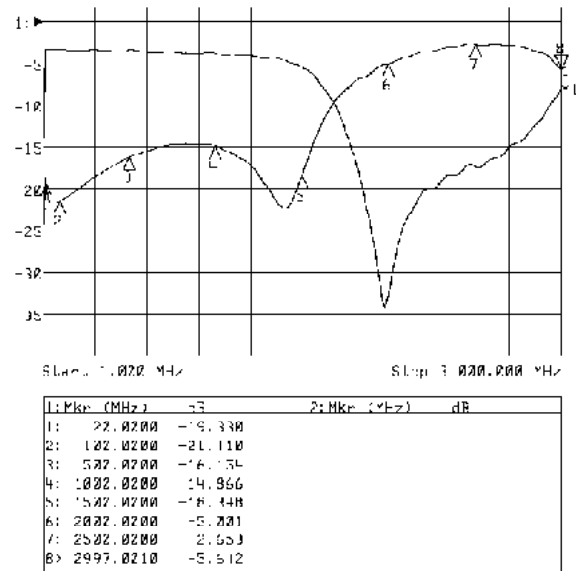
### R35040-1E: Port 2 to Port 3



### R35040-2E: Port1 to Port2 and Port3



### R35040-2E: Port 2 to Port 3



#### TOLERANCE

Unless otherwise specified  
 inch: .XX : ± 0.015 .XXX : ± 0.004  
 mm: X.X : ± 0.38 X,XX : ± 0.10

Product performance is limited to specified parameter. Data is subject to change without prior notice.

R35040-XE  
0945JW