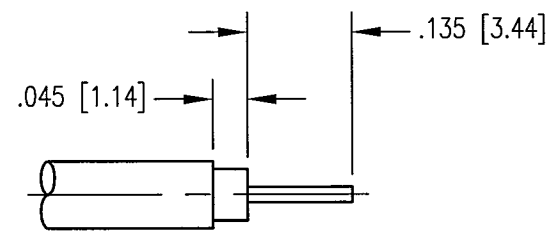
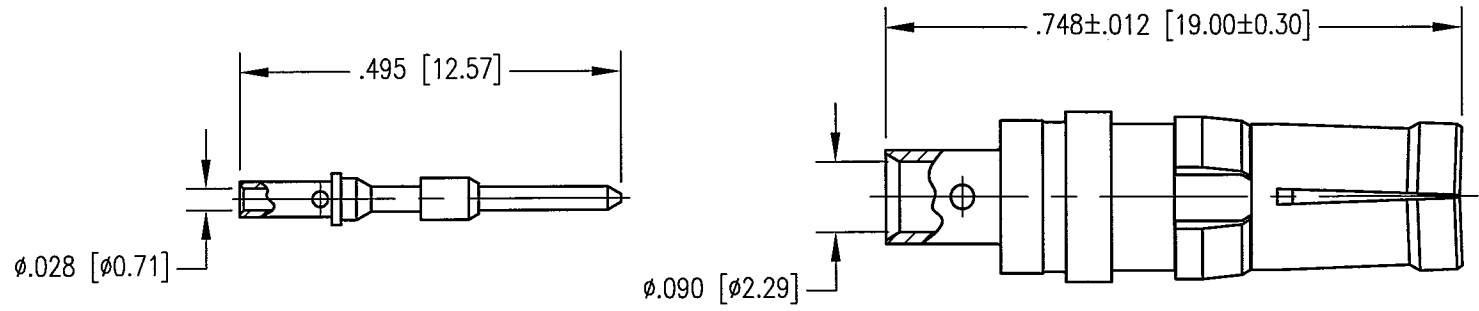


REV	DESCRIPTION	BY DATE	APPD
A	RELEASE PER ECR 7441	8/30/02 JWH	JWH



CABLE TRIMMING DIMENSIONS

NOTES:

- MATERIALS:
 FRONT BODY: COPPER ALLOY
 REAR BODY AND CONTACT: BRASS PER ASTM B16
 INSULATOR: TEFLON PER ASTM D1710
 CLIP RING: BERYLLIUM COPPER PER ASTM B194
- FINISH:
 BODY AND CONTACT: .000030 MIN. GOLD PER MIL-G-45204 OVER
 .000050 MIN. NICKEL PER QQ-N-290
 CLIP RING: .000100 MIN. NICKEL PER QQ-N-290 OVER
 COPPER FLASH
- FOR USE WITH .085 SEMI-RIGID CABLE OR EQUIVALENT.
- FOR CABLING PROCEDURE USE CAP 5-15 WITH TRIMMING DIMENSIONS SHOWN.

PER ASME Y14.5M-1994 UNLESS OTHERWISE SPECIFIED: DIMENSIONS ARE IN INCHES [MM]		NORTHROP GRUMMAN	
TOLERANCES: DECIMALS .XX ± .01 [0.254] .XXX ± .005 [0.127] ANGLES ± 2°		Winchester Electronics 400 Park Road Watertown, CT 06795	
SCALE: 4:1		TITLE	
CUSTOMER DRAWING		RDM-HF RECEPTACLE	
DRAWN JWH	DATE 8/13/02	CHECKED JED	DATE 8/26/02
APPROVED JEM	DATE 8/22/02	APPROVED KJT	DATE 8/26/02
A		291-510-0850G	SHT. 1 OF 1 REV. A