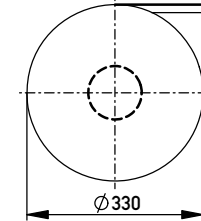
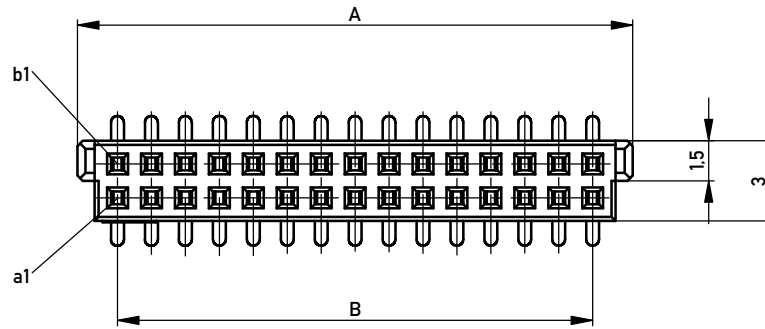
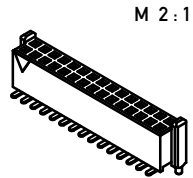
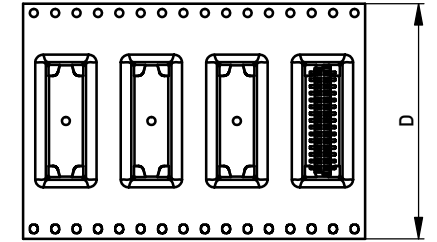


Verpackt in Gurtverpackung  
Tape on Reel Packaging  
Verpackungseinheit: 700 Stück  
Packaging unit: 700pcs



Abspulrichtung - Reel off Direction



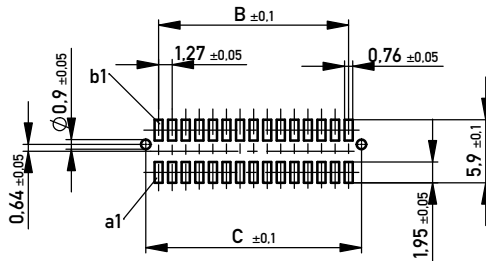
Verpackung Stange / Stange & Ansaughaube  
packaging tube / tube&cap

100	9
80	11
70	13
60	15
50	18
40	23
30	31
20	46
10	89
Polzahl No. of positions	Stück / pieces

Masse und Toleranzen in Übereinstimmung mit ANSI Y15.5M-1994 /  
Interpret dimensions according to ANSI Y15.5M-1994

109422	109413	109404	109395	109386	109377	100	65.23	62.23	64.63	88
109421	109412	109403	109394	109385	109376	80	52.53	49.53	51.93	72
109420	109411	109402	109393	109384	109375	70	46.18	43.18	45.58	72
109419	109410	109401	109392	109383	109374	60	39.83	36.83	39.23	56
109418	109409	109400	109391	109382	109373	50	33.48	30.48	32.88	56
109417	109408	109399	109390	109381	109372	40	27.13	24.13	26.53	44
109416	109407	109398	109389	109380	109371	30	20.78	17.78	20.18	44
109415	109406	109397	109388	109379	109370	20	14.43	11.43	13.83	32
109414	109405	109396	109387	109378	109369	10	8.08	5.08	7.48	24
Id-Nr. tape&reel 100 mating- cycles	Id-Nr. tape&reel 10 mating- cycles	Id-Nr. tube&cap 100 mating- cycles	Id-Nr. tube&cap 10 mating- cycles	Id-Nr. tube 100 mating- cycles	Id-Nr. tube 10 mating- cycles	Polzahl no of positions	Mass A	Mass B	Mass C	Mass D

Layout  
M 2 : 1



Bei Gurtverpackung ist Ansaughaube immer montiert.  
Tape & reel packaging is always with assembly cap.

Copyright by ERNI GmbH.  
Proprietary notice pursuant to ISO 9006 to be observed.

Information:	Tolerances	Scale 5:1
All rights reserved. Only for Information. To ensure that this is the latest version of this drawing, please contact one of the ERNI companies before using.	Subject to modification without prior notice. Drawing will not be updated.	Designation <b>MiniMez Vertical Female SMT with pegs 4,6mm</b>
www.ERNI.com	<b>109368</b>	I A3
Index	Date	Class MINIMEZ