

Part/Keyword Search



Detailed Drawing



Printer Friendly Datasheet

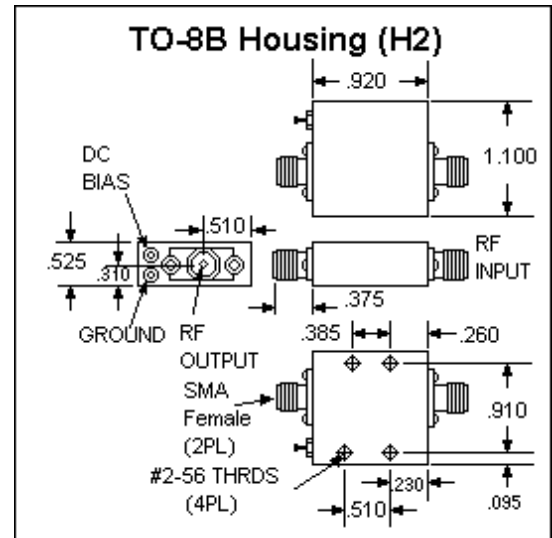
BR9313 / SBR9313*

* Part number for additional environmental screening.

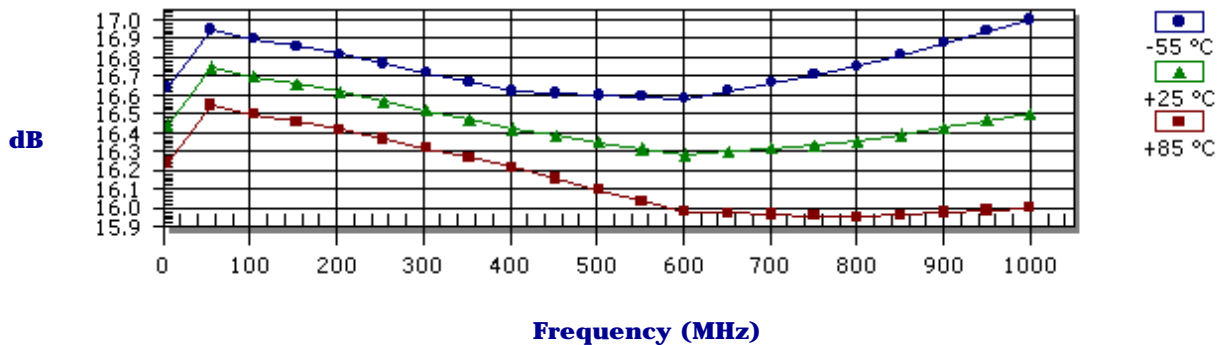
Performance Data

Frequency	5.0 - 1000.0 MHz
Gain	16.0 dB Typical 15.0 dB Min
Noise Figure	3.5 dB Typical 4.5 dB Max
P _{1dB}	12.0 dBm Typical 10.0 dBm Min
3 rd Order Intercept	23.0 dBm Typical
2 nd Order Intercept	35.0 dBm Typical
VSWR	1.5/2.0 Input Typ/Max 1.5/2.0 Output Typ/Max
Reverse Isolation	-18.0 dB Typical -17.0 dB Min
Power Supply	15.0 Volts 29.0 mA
Operating Temperature	-55.0 - 85.0 °C

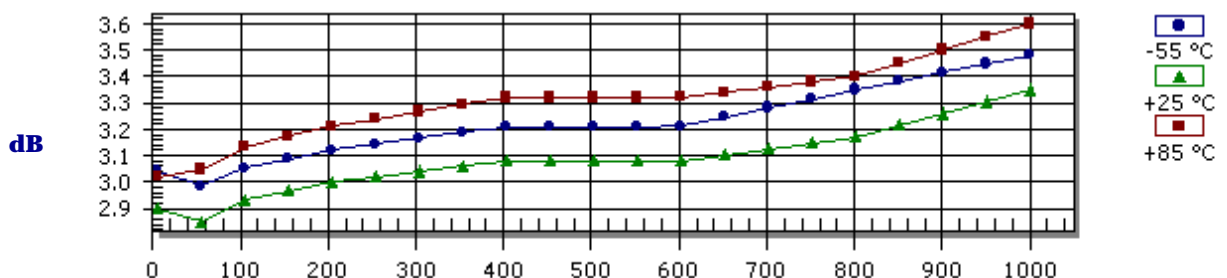
Package Drawing



Gain



Noise Figure



Products

Amplifiers

VCOs

Limiting Amplifiers

Switches

Linearizers

Limiters

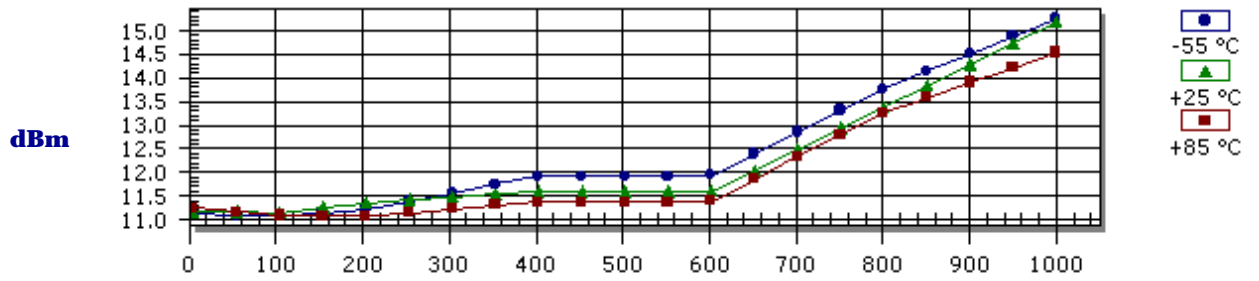
Analog Attenuators

Digital Attenuators

Detectors

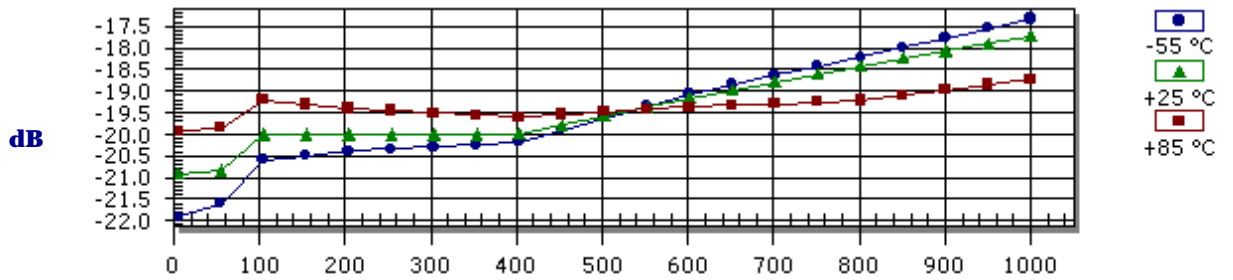
Frequency (MHz)

P_{1dB} Compression Point



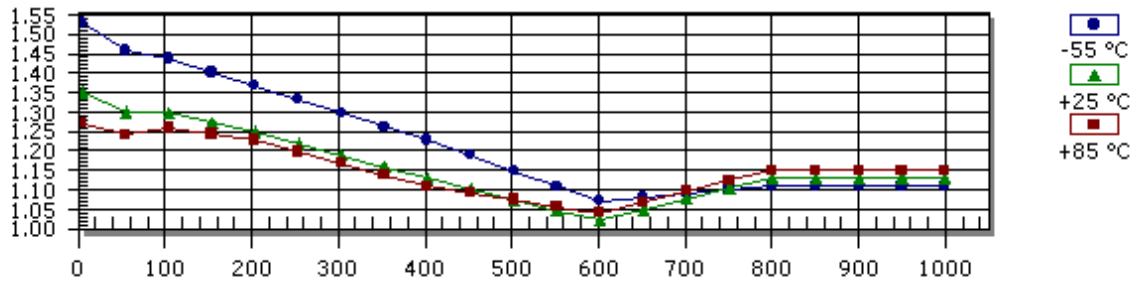
Frequency (MHz)

Reverse Isolation



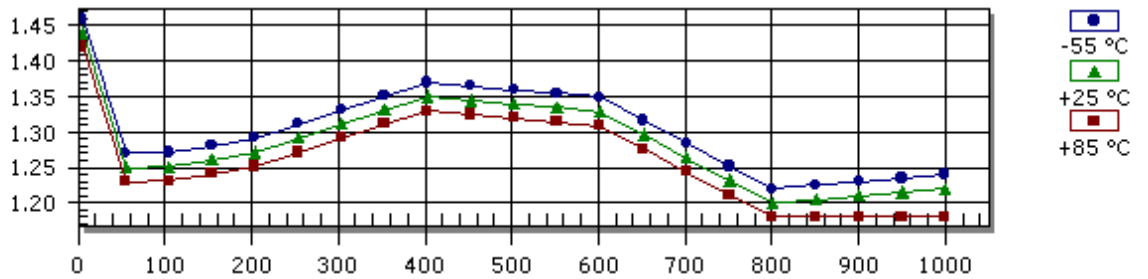
Frequency (MHz)

Input VSWR



Frequency (MHz)

Output VSWR



Frequency (MHz)

S-Parameters

Frequency	S11 Mag	S11 Ang	S21 Mag	S21 Ang	S12 Mag	S12 Ang	S22 Mag	S22 Ang
5.0	0.150	-133.00	6.640	-170.00	0.090	12.00	0.180	149.00
50.0	0.130	178.00	6.880	173.00	0.090	1.00	0.110	153.00
100.0	0.130	169.00	6.840	164.00	0.100	0.00	0.110	140.00
200.0	0.110	155.00	6.780	147.00	0.100	-1.00	0.120	112.00
400.0	0.060	128.00	6.620	115.00	0.100	-7.00	0.150	63.00
600.0	0.010	-94.00	6.520	84.00	0.110	-14.00	0.140	28.00
800.0	0.060	-111.00	6.570	50.00	0.120	-21.00	0.090	5.00
1000.0	0.060	-149.00	6.680	12.00	0.130	-31.00	0.100	70.00

Absolute Maximum Conditions

Maximum Operating Temperature	-55.0 - 100.0 °C	Maximum Storage Temperature	-62.0 - 125.0 °C
Maximum Case Temperature	125.0 °C	Maximum Supply Voltage	18.0 Volts
Continuous RF Input Power	13.0 dBm	Short Term RF Input Power (1 minute max)	50.0 mW
Maximum Peak Power (3 µsec max)	0.5 W		

Amplifonix | 2707 Black Lake Place | Philadelphia, PA 19154
Tel: 215.464.4000 | FAX: 215.464.4001 | Email: info@amplifonix.com

i2 Technologies US, Inc.

HTML Pages converted to PDF Document

This document contains component information from the manufacturer's website which are not available in a revision controlled document from the manufacturer. To facilitate the addition of these parts into the Electronics Database, we are converting the HTML pages related to that part, from the manufacturer's website into Adobe PDF format. The contents of this document is based on the information provided on the manufacturer's website, therefore the information may have been changed by the manufacturer since this was created.

