

REFERENCE SPECIFICATIONS

-NFC 93425 (in compliance with HE 508)

PHYSICAL CHARACTERISTICS

-INSULATOR MATERIAL: THERMOSET UL94V0  
 -CONTACT MATERIAL: BRASS

-ACCESSORIES: BRASS  
 -SHELLS: STEEL

ELECTRICAL CHARACTERISTICS

-NOMINAL CURRENT: 7.5A  
 -CONTACT RESISTANCE: <= 7.3 m ohms  
 -CONTACT/CONTACT : >=1000 V  
 -CONTACT/GROUND : >=1200 V  
 -INSULATION RESISTANCE: >=5000 MOhms

ENVIRONMENTAL CHARACTERISTICS

- CLIMATIC CATEGORY: 55/155/56  
 TEMPERATURE RANGE -55°C TO +155°C  
 DAMP HEAT STEADY STATE 56 DAYS  
 SALT SPRAY 48 HOURS

MECHANICAL CHARACTERISTICS

- RETENTION AGAINST TORQUE: - Threaded insert: 0.7 N.m minimum  
 - Female screw : 0.5 N.m minimum

NOTE RoHS INFORMATION

- The "LF" products meet european union Directives and other country regulations as described in GS-22-008.
- Termination plating spec:  
Gold over Nickel
- Active area plating spec:  
Gold over Nickel
- Shell plating :Bright pure tin white or transparent color
- Accessories: Bright pure tin white or transparent color
- Packaging spec: See GS-14-920

# DBML25S043NLF

Series

Shell size: **E A B C D**  
see sheet 2

Front accessory definition  
see sheet 2

- Blank** :without accessory
- F** :floating mounting
- L** :threaded insert M3
- O** :threaded insert UNC 4-40
- V** :female screw UNC 4-40

Contact number (see sheet 2)  
**9,15,25,37,50**

Contacts

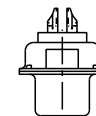
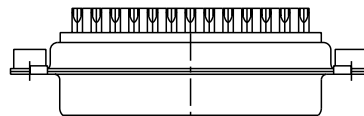
- S** :Socket

Plating

- Blank** :solder bucket 500 matings/unmatings
- 043** :solder bucket 500 matings/unmatings for harsh environment

See note RoHS

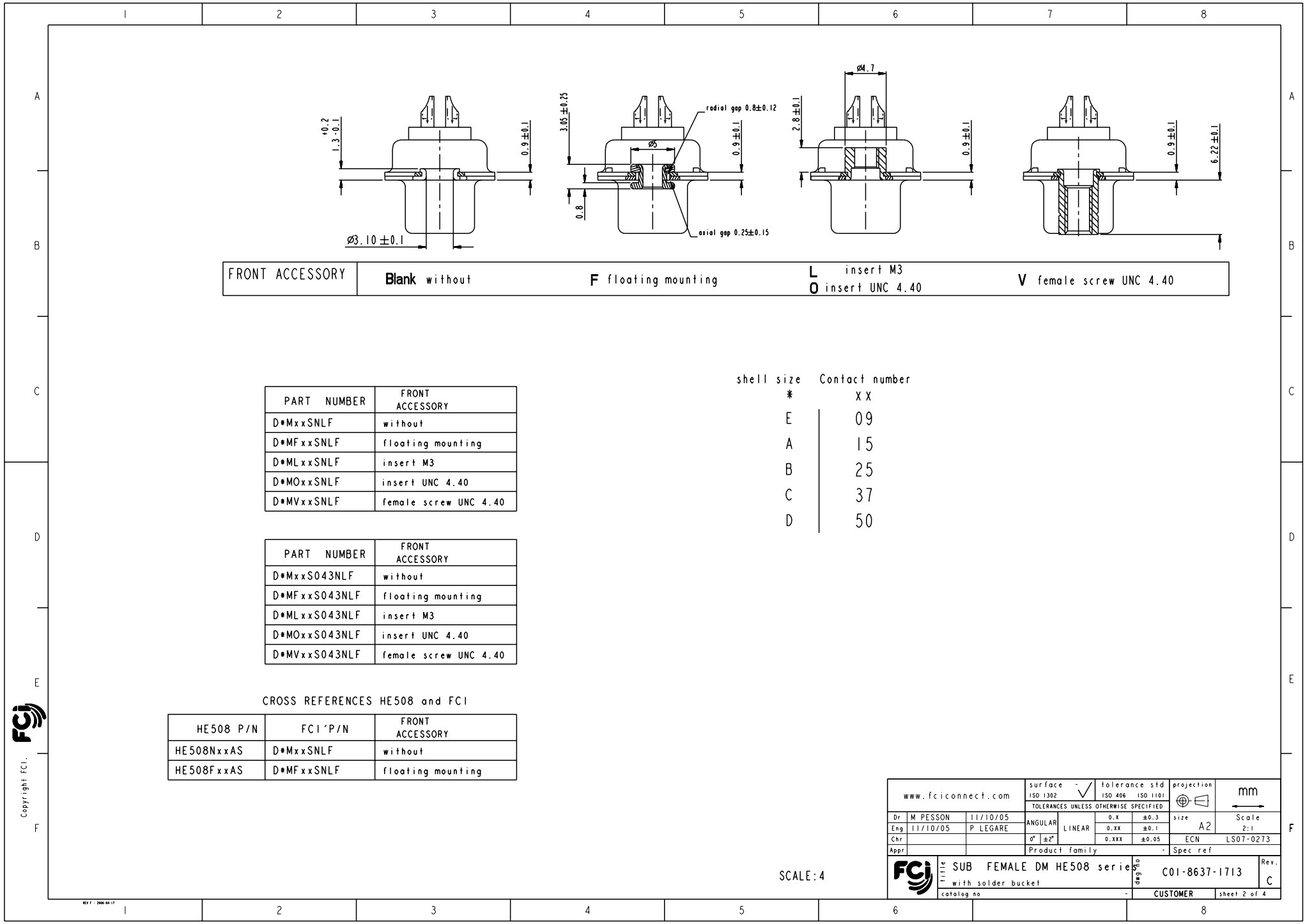
Obligatory for HE508



25 WAY for Example

rev	ecn no	dr	date
A	LS06-0008	MPE	2006/01/16
B	LS07-0235	MPE	2007/09/14
C	LS07-0273	MPE	2007/10/30
-	-	-	-
-	-	-	-
-	-	-	-

www.fciconnect.com		surface	ISO 1302	tolerance std	ISO 406	ISO 1101	projection	mm
		TOLERANCES UNLESS OTHERWISE SPECIFIED		0.X	±0.3		size	Scale
		ANGULAR	LINEAR	0.xx	±0.1		A2	2:1
		0° ±2'		0.xxx	±0.05		ECN	LS07-0273
		Product family				Spec ref		
Dr M PESSON		11/10/05		Chr P LEGARE		Appr		
FCI		SUB FEMALE DM HE508 serie		with solder bucket		C01-8637-1713		Rev. C
catalog no				CUSTOMER		sheet 1 of 4		



FRONT ACCESSORY	Blank without	F floating mounting	L insert M3 O insert UNC 4.40	V female screw UNC 4.40
-----------------	---------------	---------------------	----------------------------------	-------------------------

PART NUMBER	FRONT ACCESSORY
D*MxxSNLF	without
D*MFxxSNLF	floating mounting
D*MLxxSNLF	insert M3
D*MOxxSNLF	insert UNC 4.40
D*MVxxSNLF	female screw UNC 4.40

PART NUMBER	FRONT ACCESSORY
D*MxxS043NLF	without
D*MFxxS043NLF	floating mounting
D*MLxxS043NLF	insert M3
D*MOxxS043NLF	insert UNC 4.40
D*MVxxS043NLF	female screw UNC 4.40

shell size	Contact number
*	XX
E	09
A	15
B	25
C	37
D	50

CROSS REFERENCES HE508 and FCI

HE508 P/N	FCI P/N	FRONT ACCESSORY
HE508NxxAS	D*MxxSNLF	without
HE508FxxAS	D*MFxxSNLF	floating mounting

Copyright FCI, FCJ

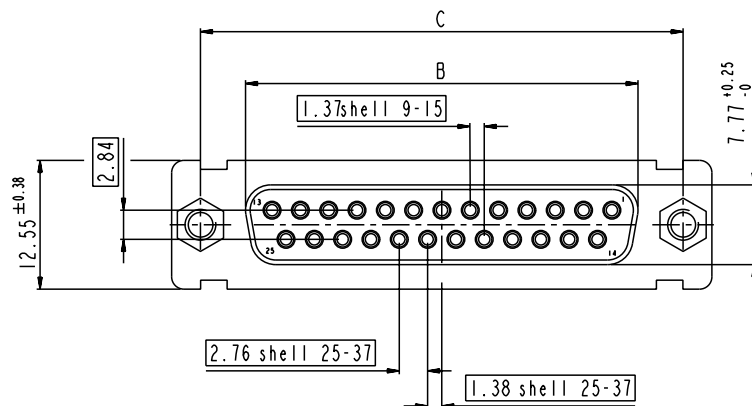
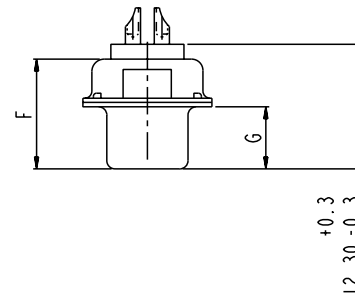
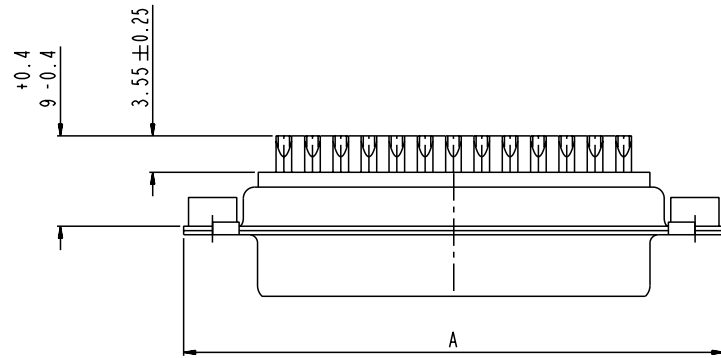
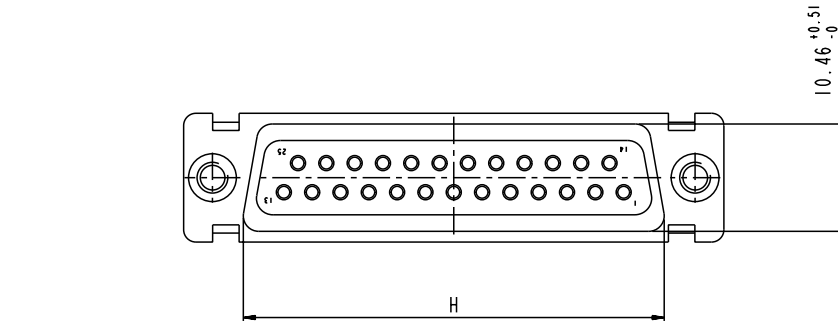
www.fciconnect.com		surface ISO 1302	tolerance std ISO 406 ISO 1101	projection mm
		TOLERANCES UNLESS OTHERWISE SPECIFIED		
Dr M PESSON	11/10/05	ANGULAR	0.X ±0.3	size A2
Eng 11/10/05	P LEGARE	LINEAR	0.XX ±0.1	Scale 2:1
Chr		0° ±2°	0.XXX ±0.05	ECN LS07-0273
Appr		Product family		Spec ref
FCJ		SUB FEMALE DM HE508 serie		Rev. C
		with solder bucket		C01-8637-1713
		catalog no		CUSTOMER
				sheet 2 of 4

SCALE: 4

# DIMENSIONS FOR SHELL E.A.B.C

Dimensions are in millimeters

Shell size	Number of contacts	A <sup>+0.76</sup> <sub>-0</sub>	B <sup>+0.25</sup> <sub>-0</sub>	C ±0.12	F <sup>+0.57</sup> <sub>-0</sub>	G <sup>+0.25</sup> <sub>-0</sub>	H <sup>+0.51</sup> <sub>-0</sub>
E	09	30.43	16.21	24.99	10.64	6.05	19.02
A	15	38.76	24.54	33.32	10.64	6.05	27.25
B	25	52.65	38.25	47.04	10.64	6.05	41.02
C	37	68.94	54.71	63.50	10.64	6.05	57.45



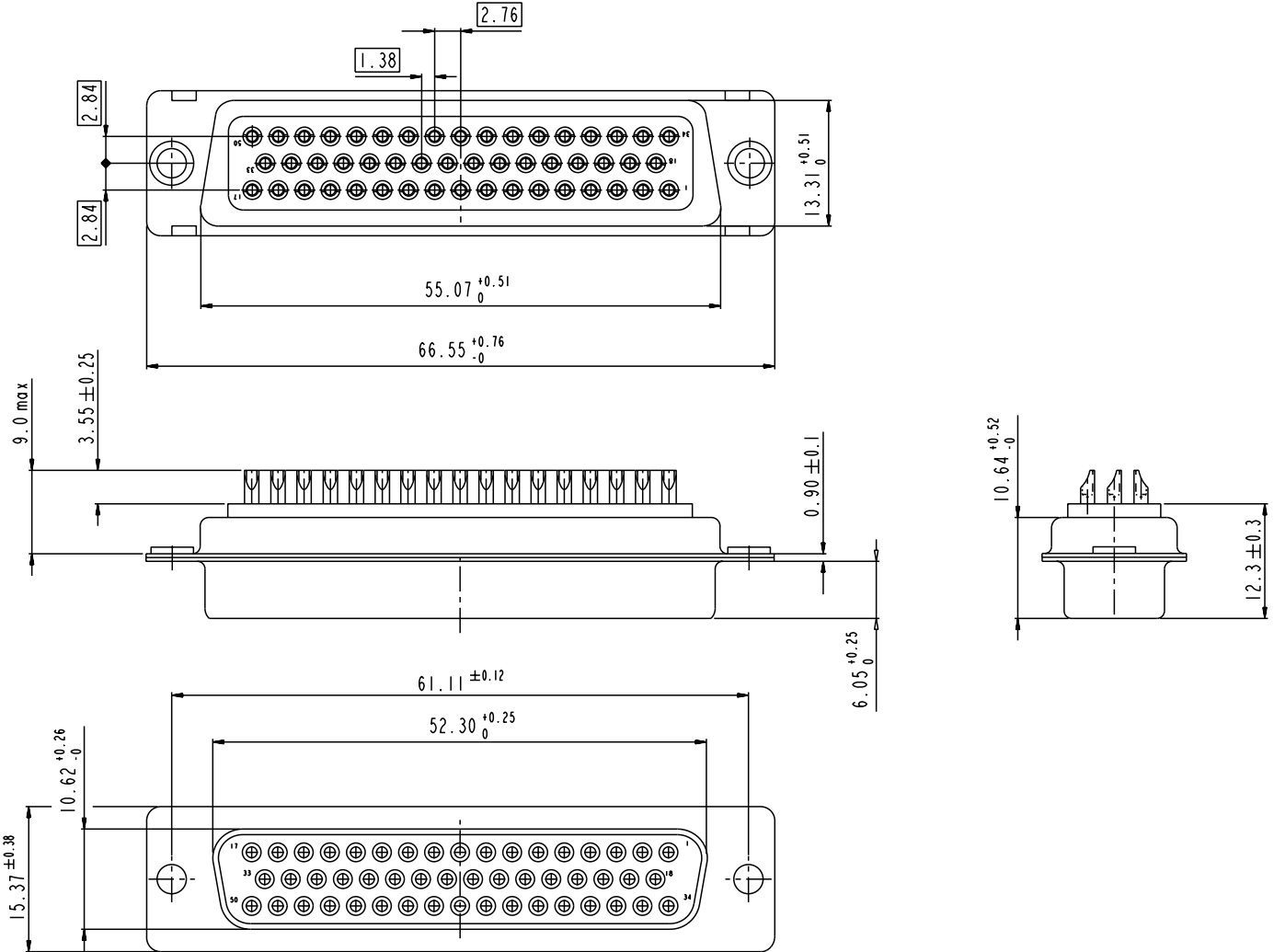
scale 3

www.fciconnect.com		surface	tolerance std	projection	mm
		ISO 1302	ISO 406 ISO 1101	⊕	
		TOLERANCES UNLESS OTHERWISE SPECIFIED			
Dr	M PESSON	11/10/05	ANGULAR	LINEAR	size A2 Scale 2:1
Eng	11/10/05	P LEGARE	0.X	±0.3	
Chr			0.XX	±0.1	
Appr			0.XXX	±0.05	ECN LS07-0273
		Product family		Spec ref	
FCI		SUB FEMALE DM HE508 serie		cat no	Rev.
		with solder bucket		C01-8637-1713	C
		catalog no		CUSTOMER	sheet 3 of 4



Copyright FCI.

DIMENSIONS FOR SHELL SIZE D (50 CONTACTS)



Copyright FCI. **FCI**

scale 3

www.fciconnect.com		surface ISO 1302	tolerance std ISO 406 ISO 1101	projection mm
		TOLERANCES UNLESS OTHERWISE SPECIFIED		
Dr M PESSON	11/10/05	ANGULAR	0.X ±0.3	size A2 Scale 2:1
Eng 11/10/05	P LEGARE	LINEAR	0.XX ±0.1	
Chr		0° ±2°	0.XXX ±0.05	ECN LS07-0273
Appr		Product family		Spec ref
<b>FCI</b>		SUB FEMALE DM HE508 serie with solder bucket		Rev. C
catalog no		C01-8637-1713		CUSTOMER sheet 4 of 4