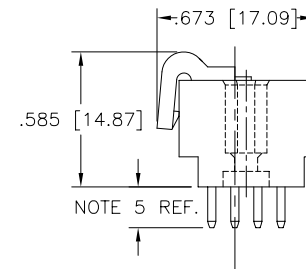
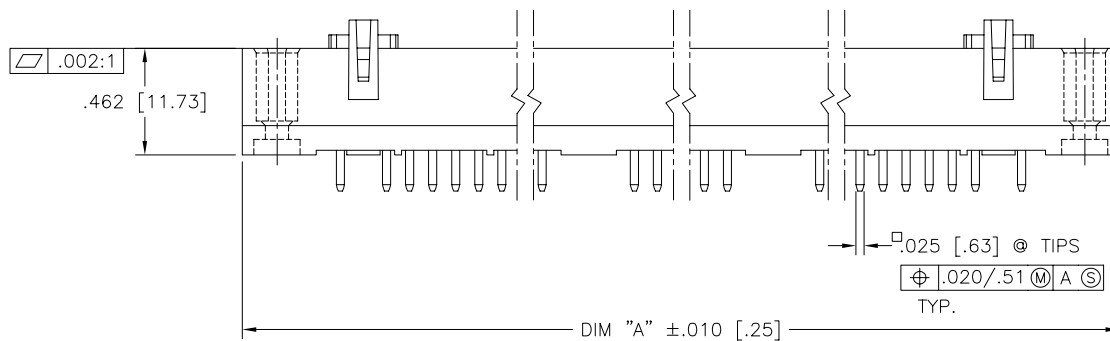
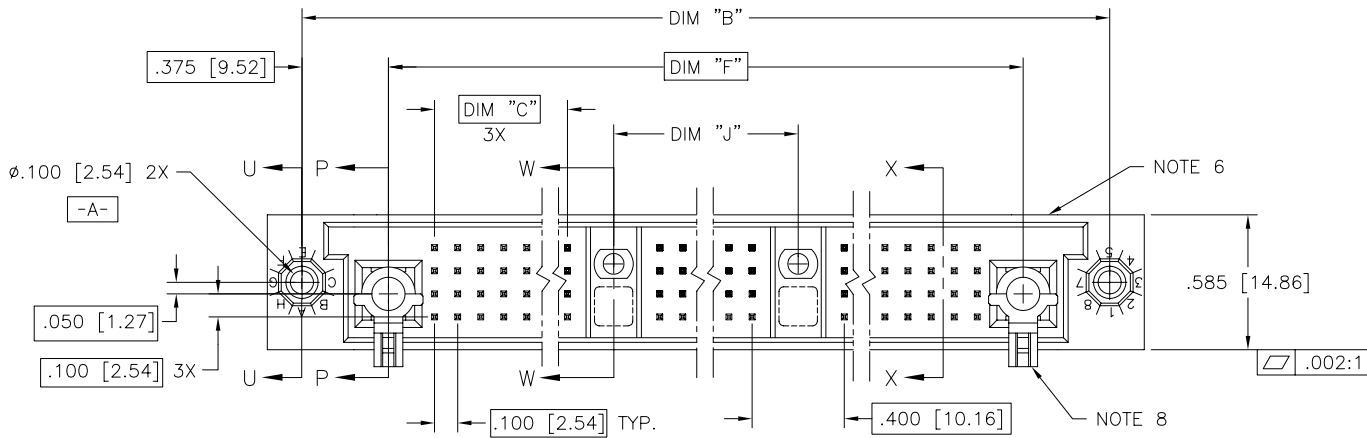


PRODUCT NUMBER
SEE NOTE 1

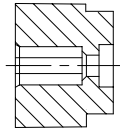


mat'l. code NOTE 3		surface ISO 1302 ✓		tolerance ISO 406 ISO 1101		projection INCH/MM		product family HPC	
tolerances unless otherwise specified		angles		linear		scale 1:1		title 4 ROW VERTICAL HEADER SOLDER TAIL, 2 G.P., 2 P.P.	
A	V22185	RDS	5/11/92		.xx±.01/.3			dwg no 50544	
B	V40264	PDP	1/14/94		.xxx±.005/.13			sheet 1 of 2 size A3	
C	V41237	GAH	8/17/94	0'±2'	.xxx±.0020/.05			type Product Customer Drawing	
D	V91071	HTB	5/17/99	dr	D.SHEAFFER	5/1/92			
E	V00274	JWS	2/2/00	engr	S.CLARK	5/11/92			
F	M06-0260	MHT	7/07/06	chr	S.CLARK	5/11/92			
		appd			S.CLARK	5/11/92			
sheet index	revision sheet	F	F						
		1	2						

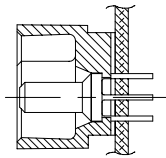


Copyright FCI

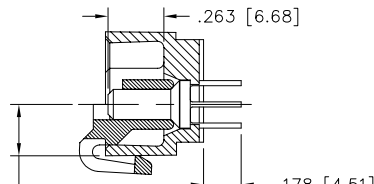
PRODUCT NUMBER	DIM.	LENGTH FORMULAS
SEE NOTE 1	DIM "A"	.100/2.54 x NO. OF COLUMNS + 1.95/49.5
	DIM "B"	.100/2.54 x NO. OF COLUMNS + 1.650/41.91
	DIM "C"	.100/2.54 x NO. OF COLUMNS DIVIDED BY 3 - .100/2.54
	DIM "F"	.100/2.54 x NO. OF COLUMNS + .900/22.86
	DIM "J"	.100/2.54 x NO. OF COLUMNS DIVIDED BY 3 + .300/7.62



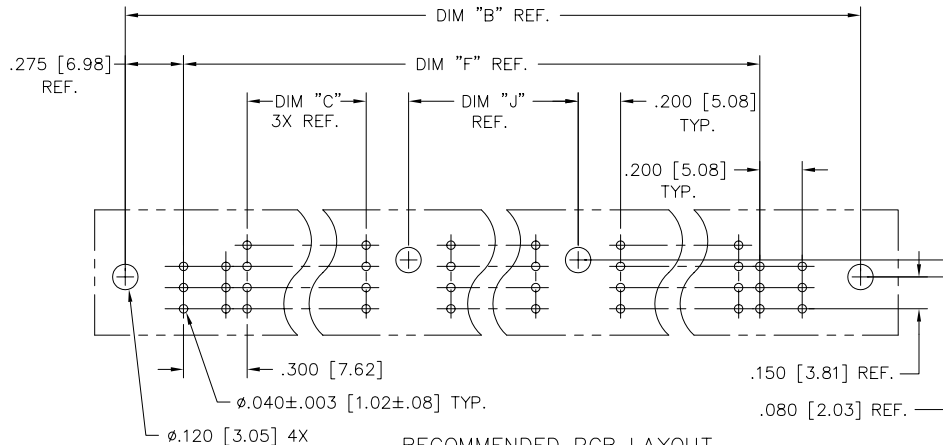
SECTION U-U



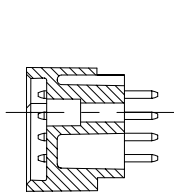
DETAIL P
(INSTALLED IN
PCB, NOTE 8)



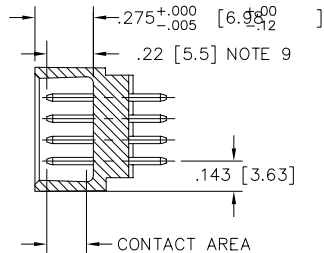
SECTION P-P
(W/LOCATOR,
SEE DETAIL P)



RECOMMENDED PCB LAYOUT
(ALL HOLES LOCATED ON .100/2.54 GRID
UNLESS OTHERWISE SPECIFIED)



SECTION W-W



SECTION X-X

NOTES:

- PRODUCT NUMBERING CODE:
50544 - X YYY Z
 - X - TAIL LENGTH (NOTE 5)
 - YYY - NO. OF POSITIONS (NOTE 2)
 - Z - PLATING (NOTE 4)
 - 50544 - BASE NUMBER
- PRODUCT NUMBERING CODE FOR SELECT LOAD PART NUMBERS:
50544 - XXYYY
 - XX - SEQUENCE NUMBER
 - YYY - ALWAYS 'XX'
 - 50544 - BASE NUMBER
- THIS PRODUCT IS CONFIGURED IN SIZES OF 30 thru 144 COLUMNS IN INCREMENTS OF THREE.
i.e.: 30,33,36,39,.....141,144.
- HOUSING MATERIAL: GLASS AND MINERAL FILLED HIGH TEMP. THERMOPLASTIC. FLAME RETARDANT PER UL94V-0. COLOR: BLACK.
PIN MATERIAL: PHOS BRONZE
- PLATING CONTACT AREA OPTIONS:
A = 50u" Ni UNDER ALL WITH 30u" Au ON CONTACT AREA, SnPb ON PCB INTERFACE AND Au FLASH ON ALL OTHER AREAS.
- TAIL LENGTH OPTIONS: (±.015/.38)
A = .177/4.5
J = .120/3.05
- MANUFACTURE'S NAME, PART NUMBER AND LOT CODE TO APPEAR ON THIS SURFACE PER BUS-12-108.
- FOR DOCUMENTATION MENU, SEE BUS-01-057.
- POWER PIN LOCATOR (REF. 50234) TO BE REMOVED AFTER SOLDERING.
- REFERENCE 50803 FOR F.M.L.B. OPTIONS AND WORKSHEET.

mat'l. code		surface ISO 1302 ✓		tolerance ISO 406 ISO 1101		projection ⊕		product family HPC	
ltr		ecn no dr		date		tolerances unless otherwise specified		title	
F						angles linear .xx±.01/.3		INCH/MM	
						0°±2'		.xxx±.005/.13	
								.xxx±.0020/.05	
				dr		D.SHEAFFER 5/1/92		scale 1:1	
				enr		S.CLARK 5/11/92		dwg no	
				chr		S.CLARK 5/11/92		sheet 2 of 2 size	
				appd		S.CLARK 5/11/92		50544 A3	
sheet index		revision sheet						type Product Customer Drawing	