

Datasheet

LX Series

5260 Power Control Series

Power Distribution, Management and Control

The 5260 Power Control Series from MRV Communications delivers AC power solutions combining intelligent power distribution and remote power control. A key element of MRV's Out-of-Band Network solutions, is providing a powerful, cost-effective approach for remote networks and systems to ensure minimal operational downtime and eliminate site visits.

Simple, Secure Remote Network Operations

The 5260 Power Control Series allows administrators to remotely power-on, power-off or reboot equipment and monitor power consumption. The 5260 models are accessible through MRV's LX Series Console Servers. These console servers feature enhanced security capabilities, including SSH v2, SNMP V3, Radius, SecurID, TACACS+, and are FIPS 140 certified. The LX Series provides management through an easy to use browser-based GUI, and extensive command line interface.

The LX Series features allows sophisticated site specific power management automation. The Trigger/Action feature of the LX Series allows site administrators to easily automate physical and security infrastructure control. Additional applications include controlling power access for lab automation, turning on additional cooling when needed, or controlling individual power outlets by department or scheduled activity.

Key Features

- Power cycle individual power outlets to remotely reboot servers and network devices, anywhere in the world. Or, power-off unused power outlets
- High Power Distribution: 120V, 208V, 240V and three-phase power options.
- 8, 16, or 24 outlets, 20 or 30 Amp power input feeds
- Vertical or horizontal mounting models
- Group outlets by name, within a unit, or across multiple units
- Power-up Sequencing prevents in-rush power overload
- Input current monitoring provides aggregate current draw on each power circuit remotely or via local LED display
- Automated alerts via SNMP
- Access controlled through standard security infrastructure including RADIUS, SecureID, TACACS+, LDAP, or local database

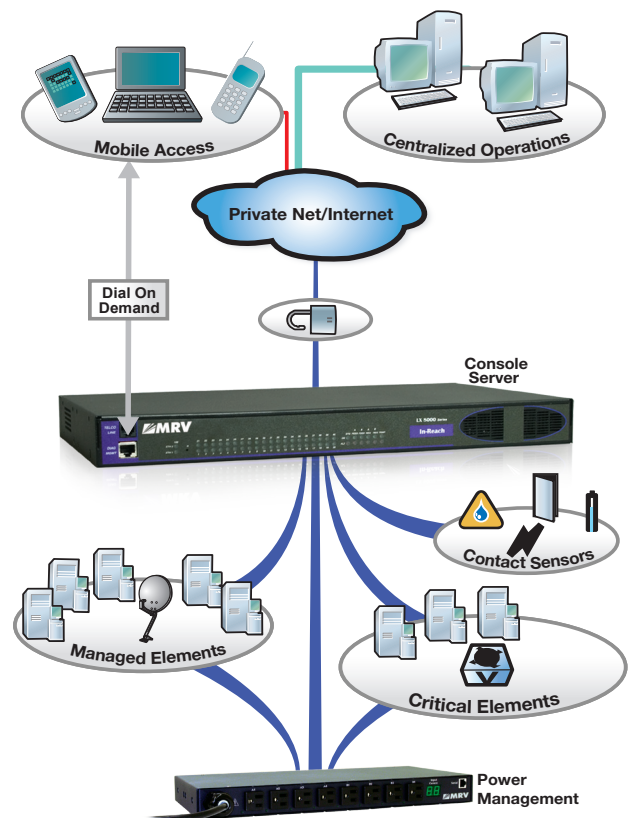


Applications

- Enterprise data centers
- Remote/Branch offices
- Test and development labs
- Utilities

Benefits

- Combine power distribution and remote power management
- Single management interface for service port management and remote power control via LX Series Console Server
- Enhance operation and efficiency of backup power systems (UPS, generator)
- Improve Service Levels by reducing down time caused by locked-up equipment



Datasheet

Model Number	Outlets	Amps	Outlet Type	Input Voltages	Input Type	Dimensions
LX-5260-8H1C20M	8	20A	NEMA 5-20R	100-120V 50-60Hz	IEC 60320/C20 Inlet	1.75" x 17.2" x 7"
LX-5260-8H2C20M	8	20A	IEC 60320/C13	200-240V 60Hz	IEC 60320/C20 Inlet	1.75" x 17.2" x 7"
LX-5260-8H2L30M	8	30A	IEC 60320/C13	200-240V 60Hz	NEMA L6-30P Fixed Cordset	1.75" x 17.2" x 7"
LX-5260-16V1C20	16	20A	NEMA 5-20R	100-120V 50-60Hz	IEC 60320/C20 Inlet	44.5" x 1.75" x 2.25"
LX-5260-16V1L30	16	30A	NEMA 5-20R	100-120V 50-60Hz	NEMA L5-30P Fixed Cordset	44.5" x 1.75" x 2.25"
LX-5260-24V2L30	24	30A	IEC 60320/C13	208-240V 60Hz	NEMA L6-30P Fixed Cordset	69.0" x 1.75" x 3.0"
LX-5250-24VYL30	24	30A	IEC 60320/C13	3-Phase 208V 60Hz	NEMA L21-30P Fixed Cordset	69.0" x 1.75" x 3.0"
European Models - RoHS Compliant						
LX-5260-8HEC20M	8	16A	IEC 60320/C13	230V 50-60Hz	IEC 60320/C20 Inlet	1.75" x 17" x 7"
LX-5260-24VEP32	24	32A	IEC 60320/C13	230V 50/60Hz	IEC Fixed Blue 2P+G Plug Cordset	49.5" x 1.75" x 2.25"



Specifications	
Network Interface	10/100 BaseT Ethernet (upgrades only)
Serial Interface	RS-232, modular RJ-45
Operating Temperature	32° to 122° F (0° to 50° C)
Storage Temperature	-40° to 185° F (-40° to 85° C)
Humidity	10 to 90%, non-condensing
Certifications	FCC Class A, Part 15 IEC 60950-1: 2007 CAN/CSA- C22.2 No. 60950-1-07 EN 55022 Class A, EN 55024, CISPR 22 Class A ROHS Compliant
Warranty	Three Years

Power Inlet Cord Options	
LX-5250-PCORD1	IEC 60320/C19 - NEMA L6-20P, 10'
LX-5250-PCORD2	IEC 60320/C19 - SHUKO 10'
LX-5250-PCORD3	IEC 60320/C19 - IEC 60309 (BS4343, CEE17) 16/20A BLUE (UK Commando)
LX-5250-PCORD4	IEC 60320/C19 - BS1363 13A (UK) 10'
LX-5250-PCORD5	IEC 60320/C19 - 5-15P (15A Straight -Blade) 10'
LX-5250-PCORD6	IEC 60320/c19 - 5-20P (20A Straight-Blade) 10'
LX-5250-PCORD7	IEC 60320/C19 - L5-20P (20A Twist-Lock) 10'

MRV operates Worldwide sales and service offices across four continents.

Contact us at info@mrv.com

MRV Communications
Corporate Headquarters
300 Apollo Drive
Chelmsford, MA 01824

<http://www.mrv.com>



All statements, technical information and recommendations related to the products herein are based upon information believed to be reliable or accurate. However, the accuracy or completeness thereof is not guaranteed, and no responsibility is assumed for any inaccuracies. Please contact MRV Communications for more information. MRV Communications and the MRV Communications logo are trademarks of MRV Communications, Inc. Other trademarks are the property of their respective holders.