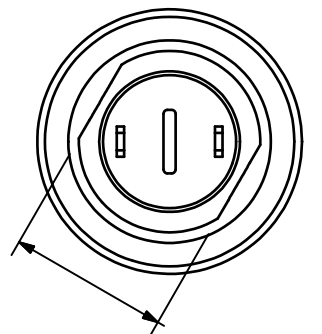
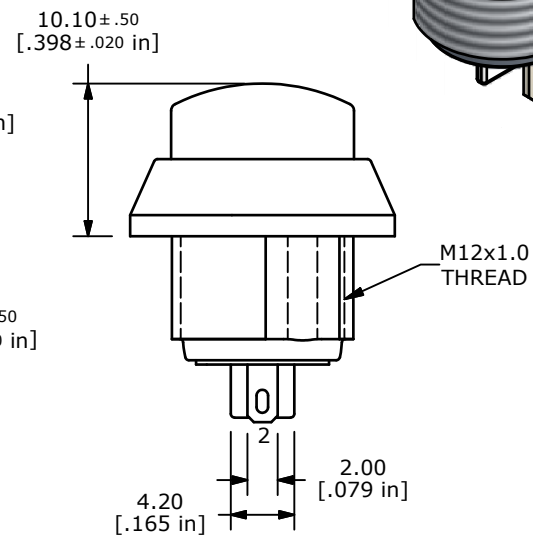
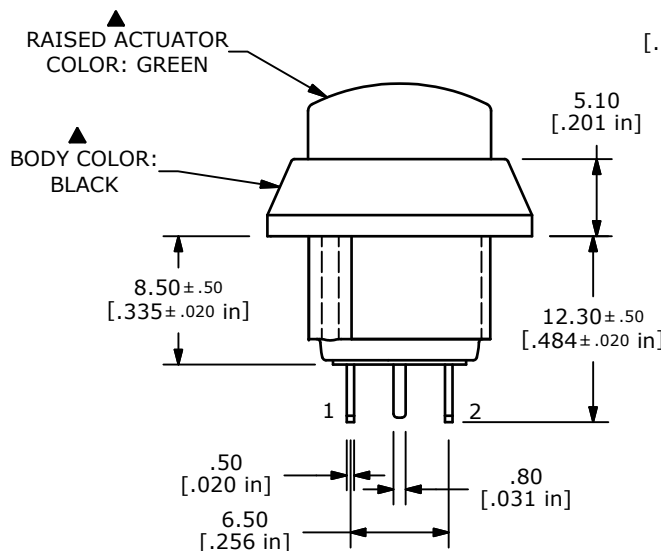


**PANEL MOUNTING**  
MAX. PANEL THICKNESS 4mm

▲ **SWITCH FUNCTION**

POS. 1	POS. 2
OFF	(ON)
OPEN	1-2

(ON) = MOMENTARY



- NOTE:**
1. ALL DIMENSIONS IN MM [INCH]
  2. GENERAL TOLERANCE: X.X=±0.4  
X.XX=±0.25
  3. TERMINAL NUMBERS FOR REF ONLY
  4. CIRCUIT: SPST, OFF- (ON)
  - ▲ 5. CONTACT MATERIAL: SILVER
  6. RATING: 2A @ 48 VDC
  7. ELECTRICAL LIFE: 200,000 CYCLES
  8. CONTACT RESISTANCE: 50 mΩ MAX. @ 1A 12VDC (INITIAL)
  9. INSULATION RESISTANCE: 1,000 MΩ MIN. @ 500VDC.
  10. DIELECTRIC STRENGTH: 2,000 VAC rms.
  11. OPERATING TEMPERATURE: -20°C TO +70°C.
  12. PANEL THICKNESS MAX: 4.0 mm.
  13. INGRESS PROTECTION: IP65
  14. ▲ DENOTES CRITICAL PARAMETER.
  15. 2002/95/EC (ROHS) COMPLIANT
  - ▲ 16. HARDWARE INCLUDED, 1 O-RING & 1 HEX NUT.(NOT SHOWN)



A	20158	RELEASE FOR PRODUCTION	9/19/11	BGL
REV	PCR NO	DESCRIPTION	DATE	BY

TITLE PV5H24018				
SCALE	DATE	DR	DWG	REV
2:1	9/19/2011	BGL	52-PV5H24018	A

THE INFORMATION CONTAINED IN THIS DOCUMENT IS PROPRIETARY TO E-SWITCH AND IS NOT TO BE COPIED OR TRANSFERRED