

SQUARE FLANGE FEMALE RECEPTACLE

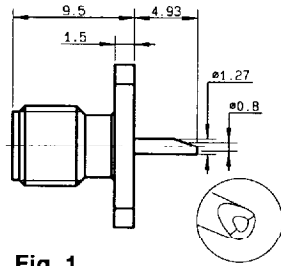
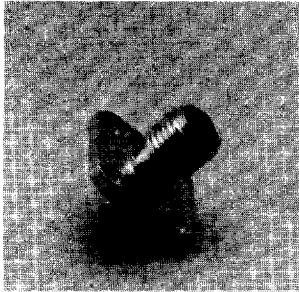


Fig. 1

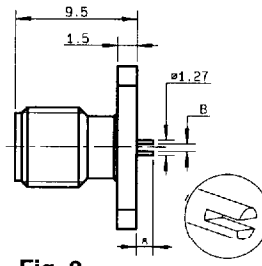


Fig. 2

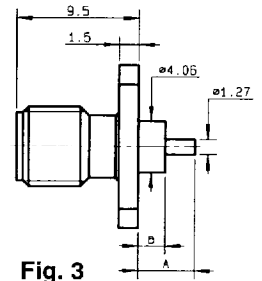


Fig. 3

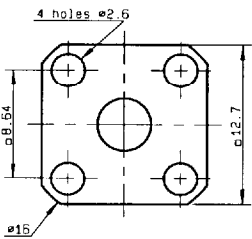


Fig.1 to 4

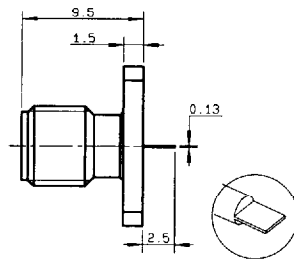


Fig. 4

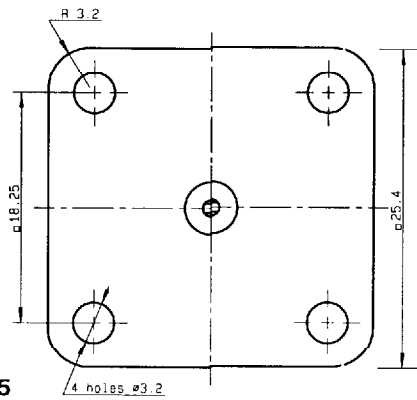
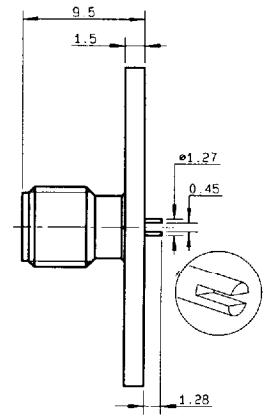


Fig. 5



part number	fig.	A	B	panel drilling	finish	note
R124 403 120	1			P 04	BBR	
R124 403 123	1			P 04	Gold	
R124 498 030●	2	1,3	0,7	P 04	Gold	
R124 498 047●	2	2	0,51	P 04	BBR	
R124 510 000	4			P 04	BBR	
R124 510 003	4			P 04	Gold	
R124 409 503●	5			P 07	Gold	25,4 flange
R124 409 507●	5			P 07	BBR	
R124 414 000	3*	15,9	12,7	P 04	BBR	4 Indents
R124 414 003	3*	15,9	12,7	P 04	Gold	
R124 415 270	3*	17,9	15	P 04	BBR	
R124 415 273	3*	17,9	15	P 04	Gold	
R124 414 004	3*	15,9	12,7	P 04	Gold	
R124 414 005	3*	15,9	12,7	P 04	BBR	
R124 415 274	3*	17,9	15	P 04	Gold	Epoxy
R124 415 275	3*	17,9	15	P 04	BBR	
R124 413 300 XY	3*	Custom dimensions		P 04	Gold	Non captivated center contact
R124 413 307 XY	3*		P 04	BBR		
R124 414 300 XY	3*		P 04	Gold	Epoxy	
R124 414 307 XY	3*		P 04	BBR		
R124 416 300 XY	3*		P 04	Gold	4 indents	
R124 416 307 XY	3*		P 04	BBR		

* : For more details, see Application guide for SMA extended dielectric receptacles D 1 125 DE.

● Upon request.

Standard packaging : 100 pieces