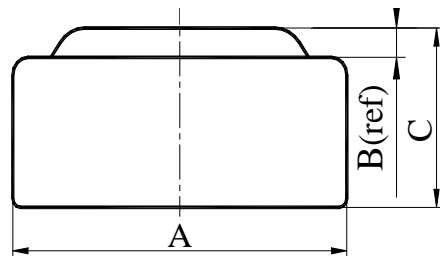
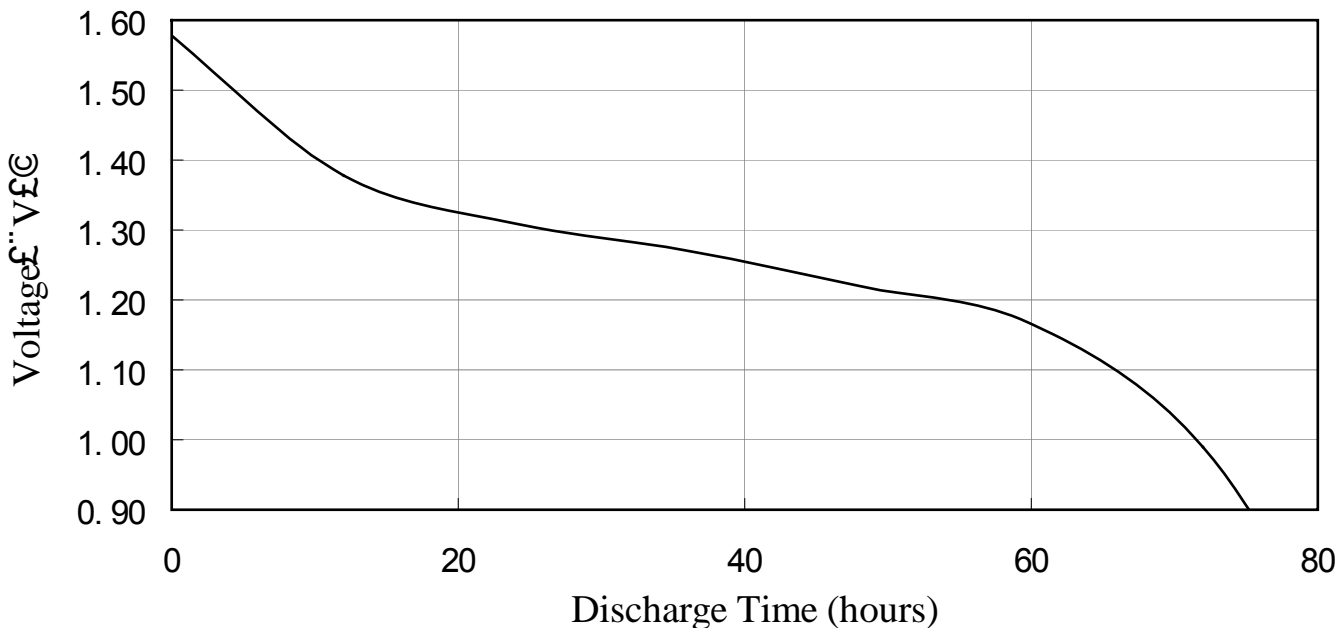


Chemical System : Alkaline manganese button batteries
Model No. : LR621 (LR60 AG1 164)
Nominal Dimensions: $\Phi 6.80 \times 2.15\text{mm}$
Nominal Voltage : 1.50V
Average Weight : 0.30g
Applications : Watch, Calculator, Electronic toy, etc.
Shelf Life : Not less than 90% of the service capacity, following 1st year storage at 20°C.
Loading : 6800Ω(20°C)
Cut Off Voltage : 0.90V
Capacity : 13mAh



Dimensions	Unit: mm
A	6.70----6.80
B	0.25(ref)
C	1.95----2.15

Typical Discharge Characteristics at 20



SPEC.No.:REF-L60-0102

*Manufacturer reserves the right to alter or amend the design, model and specification without prior notice.