

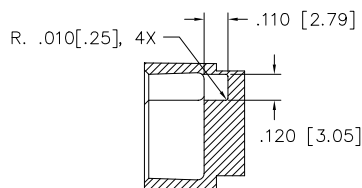
PRODUCT NUMBER
SEE NOTE 1

DIM.	LENGTH FORMULAS
DIM "A"	.100/2.54 x NO. OF COLUMNS + .75/19.1
DIM "B"	.100/2.54 x NO. OF COLUMNS + .45/11.4
DIM "C"	.100/2.54 x NO. OF COLUMNS - .10/2.5

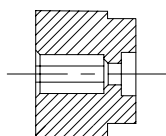
NOTES:

- PRODUCT NUMBERING CODE:
50734 - X YYY Z
TAIL LENGTH (NOTE 5)
NO. OF POSITIONS (NOTE 2)
PLATING (NOTE 4)
BASE NUMBER

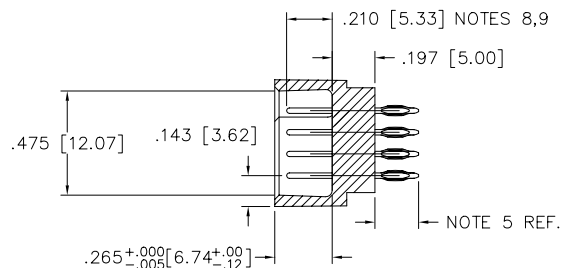
PRODUCT NUMBERING CODE FOR
SELECT LOAD PART NUMBERS:
50734 - XYYYY
SEQUENCE NUMBER
ALWAYS 'XX'
BASE NUMBER
- THIS PRODUCT IS CONFIGURED IN SIZE OF 6 THRU 80
COLUMNS IN INCREMENTS OF ONE.
i.e.: 6,7,8,9.....79, 80
- MATERIALS:
HOUSING - GLASS AND MINERAL FILLED
HIGH TEMP. THERMOPLASTIC. FLAME RETARDANT PER
UL94V-0. COLOR: BLACK.
PINS - PHOS BRONZE
- PLATING OPTIONS:
A = 50u" Ni UNDER ALL WITH 30u" Au ON CONTACT AREA,
SnPb ON PCB INTERFACE AND Au FLASH ON ALL
OTHER AREAS.
B = 50u" Ni UNDER ALL WITH 30u" GXT ON CONTACT AREA,
SnPb ON PCB INTERFACE AND Au FLASH ON ALL
OTHER AREAS.
- TAIL LENGTH OPTIONS:
FOR PLATING OPTIONS "A" & "B" ONLY:
A = .177/4.5
G = .250/6.35
- MANUFACTURE'S NAME, P/N, & LOT CODE TO APPEAR
ON THIS SURFACE PER BUS-12-108.
- FOR DOCUMENTATION MENU, SEE BUS-01-057.
- REFERENCE 50807 FOR FIRST MATE LAST BREAK MATING
LENGTHS AVAILABLE AND FOR SELECTIVELY LOADED HEADER
WORKSHEET. MATING LENGTHS WILL BE .010" SHORTER THAN
SPECIFIED ON WORKSHEET DUE TO THE .197 DIMENSION
SHOWN IN SECTION H-H.
- TO ASSURE PROPER INSTALLATION, TOOLING AS
SPECIFIED IN INSTRUCTION MANUAL 155915-001 MUST BE USED.
MATING LENGTH WILL BE $\pm .002/.05$ AFTER INSTALLATION.
- $\phi .0453[1.151]$ DRILLED HOLES PLATED w/.0003 [.007]
MIN. SnPb OVER .001 [.03] to .003 [.08] Cu. PLATING
TO ACHIEVE A $\phi .040 \pm .003[1.02 \pm .08]$ HOLE.



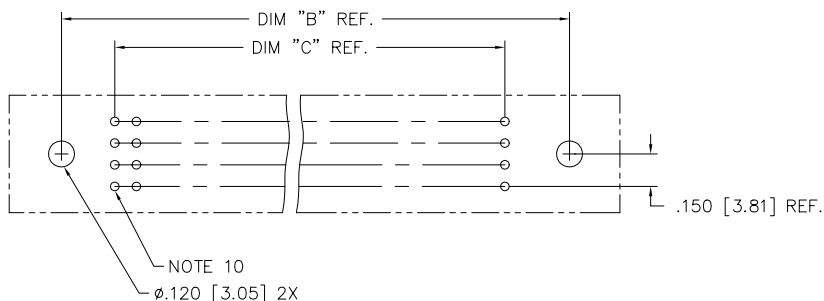
SECTION X-X



SECTION U-U



SECTION H-H



RECOMMENDED PCB LAYOUT
ALL HOLES LOCATED ON .100[2.54] GRID
UNLESS OTHERWISE SPECIFIED

mat'l. code				surface ISO 1302 <input checked="" type="checkbox"/>	tolerance ISO 406 ISO 1101	projection 	product family HPC
ltr	ecn	no	dr	date	tolerances unless otherwise specified	INCH/MM scale 1:1 	title
H					angles linear .XX $\pm .01/.3$.XXX $\pm .005/.13$.XXXX $\pm .0020/.051$		4 ROW VERTICAL HEADER PRESS FIT, W/SPECIAL POCKETS
			dr	G. PETERS	9/19/93		dwg no
			enr	S. CLARK	9/19/93		sheet 2 of 2 size
			chr	S. CLARK	12/13/93		50734 A3
			appd	S. CLARK	12/14/93		type Product Customer Drawing
sheet index	revision sheet						