

**ELECTRICAL DATA**

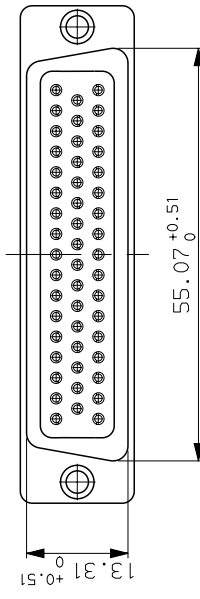
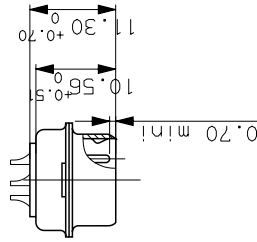
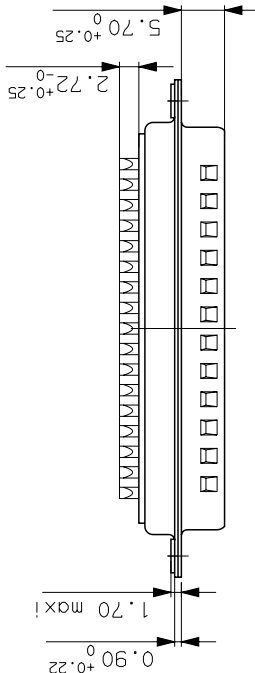
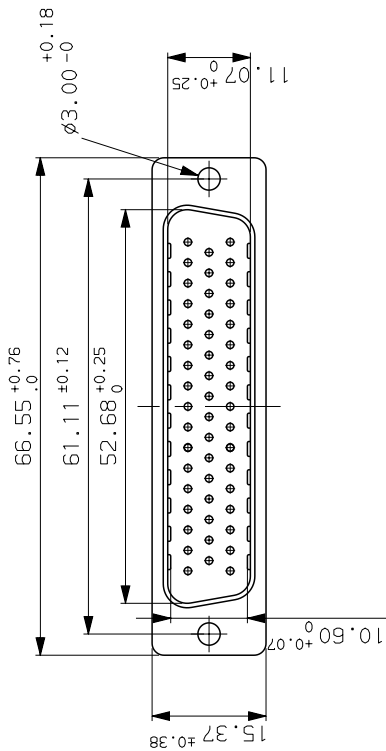
- I max 7.5A
- Contact resistance  $\leq 7.3\text{ m}\Omega$
- Insulation resistance  $>5000\text{M}\Omega$
- TEST VOLTAGE  $\geq 1000\text{V}$
- contact/contact  $\geq 1200\text{V}$
- contact/ground

**MECHANICAL DATA**

- Contact force  $\geq 0.14\text{N}$
- Retention force  $\geq 40\text{N}$
- Insertion force according to DIN41652 Part 2
- Withdrawal force according to DIN41652 Part 2
- Mechanical endurance :500 matings/unmatings for 0.4 & 0.8  $\mu$  gold ;200 matings/unmatings for flash gold
- Material shell steel, bright tin-lead
- Material insulator glass filled thermoplastic UL94V0
- Material contacts pin, brass
- Finish on contact area gold over nickel
- Finish on termination end bright tin-lead over nickel
- Solderability according to DIN 41640 Part 70, test 12a
- Shock according to DIN41640 Part 14, test 6e, 50g
- Vibration according to DIN41640 Part 15, test 6d, 20g 10 to 2000Hz:discontinuity $\leq 1\mu\text{s}$
- Environmental category -55/125/21j
- Corrosion salt spray:24h

**ENVIRONMENTAL DATA**

- Climatic category
- Corrosion



DDP50PTX	0.4 $\mu$ gold
DDP50P043TX	0.8 $\mu$ gold
DDP50P031TX	flash gold
Part number	Plating

c	15/01/04	Add part number	--
ISS	DATE	Latest modification by :	BART.S
Designed by:		JARRY	date:24/07/02
TITLE :		PIN CONNECTORS D SUBMINIATURE WITH SOLDER CONTACT	
SCALE:	1.5	Type of drawing:	CLIENT
SHEET 1/1		MOD N°	
FRAMATOME CONNECTORS FRANCE Rue Louis Breguet - Bp 05 72024 LE MANS Cedex Tel. 33 (16) 43.84.08.43		This document is the property of FRAMATOME CONNECTORS FRANCE It must not be reproduced or communicated without permission in writing from the owners	
FORMAT A3	SOURIAU DRG N° C01-8637-1595	PROJECT M94D001	