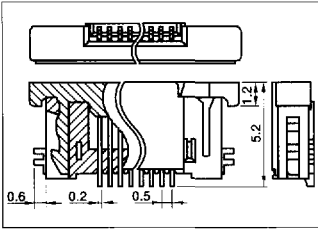
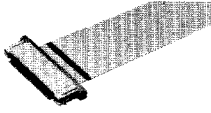


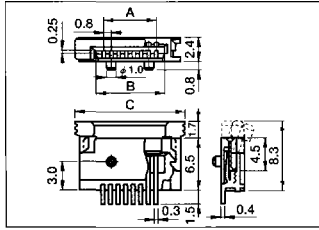
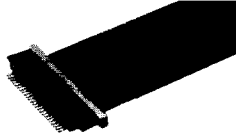
FP-50 Series (Pitch 0.5mm)



FPC CONNECTOR (SMT TYPE)
FPCコネクタ (SMT対応)

- Rating: 0.5A 50V AC/DC
- Contact Resistance: 30mΩ max.
- Insulation Resistance: 100MΩ min. at 100V DC
- Operating Temperature: -25°C ~ +85°C
- Part No: CFP 55□□-□□01
CFP 57□□-□□01

FP-80 Series (Pitch 0.8mm)

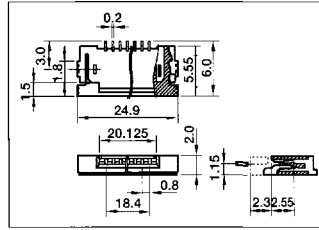
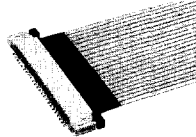


FPC CONNECTOR (SMT TYPE)
FPCコネクタ (SMT対応)

- Rating: 0.5A 50V AC/DC
- Height from PCB is only 2.5mm
- ZIF Structure

No. Posi	Part No.	Dimension		
		A	B	C
12	CFP6512-01□□	8.8	10.5	15.3
16	CFP6516-01□□	12.0	13.7	18.5
18	CFP6518-01□□	13.6	15.3	20.1
24	CFP6524-01□□	18.4	20.1	24.9
30	CFP6530-01□□	23.2	24.9	29.7

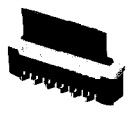
FP-8 Series (Pitch 0.8mm)



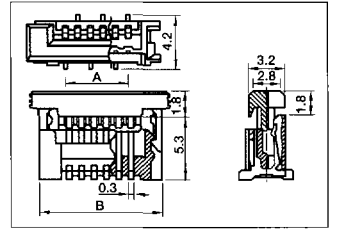
FPC CONNECTOR (SMT TYPE)
FPCコネクタ (SMT対応)

- Rating: 0.5A 50V AC/DC
- Contact Resistance: 30mΩ max.
- Insulation Resistance: 1000MΩ min. at 500V DC
- Withstanding Voltage: 500V AC for one minute
- Operating Temperature: -25°C ~ +70°C
- Part No: CFP 06□□-03□□

FP-10 Series (Pitch 1.0mm)



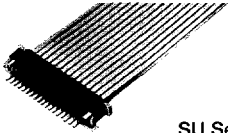
Straight



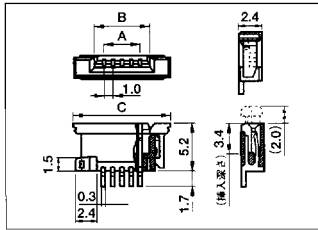
FPC CONNECTOR (SMT TYPE)
FPCコネクタ (SMT対応)

- Rating: 0.5A 50V AC/DC
- Contact Resistance: 30mΩ max.
- Insulation Resistance: 1000MΩ min. at 500V DC
- Withstanding Voltage: 500V AC for one minute
- Operating Temperature: -25°C ~ +70°C
- Part No: CFP 61□□-0101

FP-10^{SU} Series (Pitch 1.0mm)



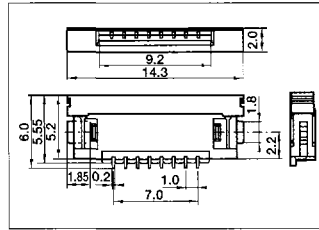
SU Series



FPC CONNECTOR (SMT TYPE)
FPCコネクタ (SMT対応)

- Rating: 0.5A 50V AC/DC
- Contact Resistance: 30mΩ max.
- Insulation Resistance: 1000MΩ min. at 500V DC
- Withstanding Voltage: 500V AC for one minute
- Operating Temperature: -25°C ~ +70°C
- Part No: CFP 05□□-02□□
CFP 15□□-01□□

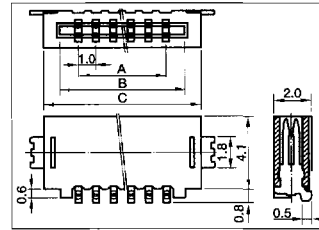
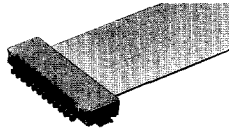
CFP3508-0101 (Pitch 1.0mm)



FPC CONNECTOR (SMT TYPE)
FPCコネクタ (SMT対応)

- Rating: 0.5A 100V AC/DC
- Contact Resistance: 30mΩ max.
- Insulation Resistance: 500MΩ min. at 500V DC
- Withstanding Voltage: 500V AC for one minute
- Operating Temperature: -25°C ~ +70°C

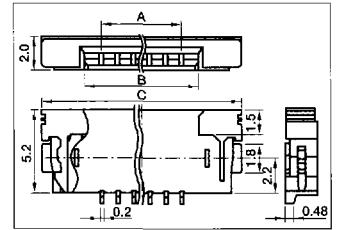
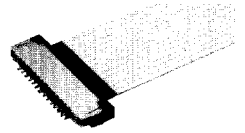
FF-10LP Series (Pitch 1.0mm)



FFC CONNECTOR (SMT TYPE)
FFCコネクタ (SMT対応)

- Rating: 0.5A 50V AC/DC
- Contact Resistance: 30mΩ max.
- Insulation Resistance: 1000MΩ min. at 500V DC
- Operating Temperature: -25°C ~ +85°C
- Part No: CFP 02□□-0101

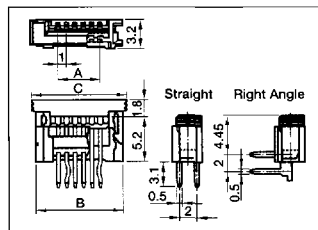
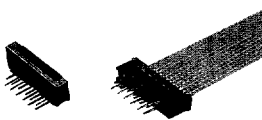
FP-10LP Series (Pitch 1.0mm)



FPC CONNECTOR (SMT TYPE)
FPCコネクタ (SMT対応)

- Rating: 1A 50V AC/DC
- Contact Resistance: 30mΩ max.
- Insulation Resistance: 1000MΩ min. at 500V DC
- Withstanding Voltage: 500V AC for one minute
- Operating Temperature: -25°C ~ +70°C
- Part No: CFP 20□□-0201

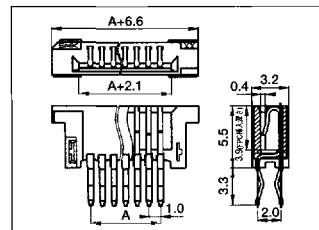
FP-10 Series (Pitch 1.0mm)



FPC CONNECTOR
FPCコネクタ (1.0mmピッチ)

- Rating: 0.5A 50V AC/DC
- Contact Resistance: 30mΩ max.
- Insulation Resistance: 1000MΩ min. at 500V DC
- Withstanding Voltage: 500V AC for one minute
- Operating Temperature: -25°C ~ +85°C
- Part No: CFP 01□□-01□□
CFP 03□□-01□□

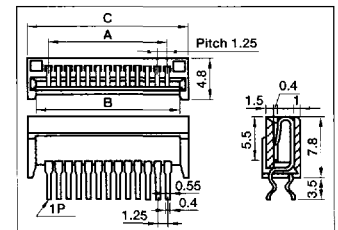
FC-10 Series (Pitch 1.0mm)



FFC CONNECTOR
FFCコネクタ (1.0mmピッチ)

- Rating: 0.5A 50V AC/DC
- Contact Resistance: 30mΩ max.
- Insulation Resistance: 1000MΩ min. at 500V DC
- Withstanding Voltage: 500V AC for one minute
- Operating Temperature: -25°C ~ +70°C

FF Series (Pitch 1.25mm)



FFC CONNECTOR
FFCコネクタ (1.25mmピッチ)

- Rating: 1A 200V AC
- Contact Resistance: 30mΩ max.
- Insulation Resistance: 500MΩ min. at 250V DC
- Withstanding Voltage: 500V AC for one minute
- Applicable FFC Thickness: 0.3mm
- Part No: CFF 11□□-01□□
CFF 13□□-01□□

DIP TYPE: CFF61□□-0101

SMT TYPE: CFF23□□-01□□

<レパートリー>

図番	形状	接触面
CFF23□□-01□□	SMT-L	上接点
CFF43□□-01□□	SMT-逆L	下接点
CFF41□□-01□□	SMT-S	—
CFF51□□-0101	DIP-S	—
CFF61□□-0101	DIP-S-逆組	—
CFF33□□-0101	DIP-L	上接点
CFF73□□-0101	DIP-L-逆組	上接点
CFF83□□-0101	DIP-逆L	下接点